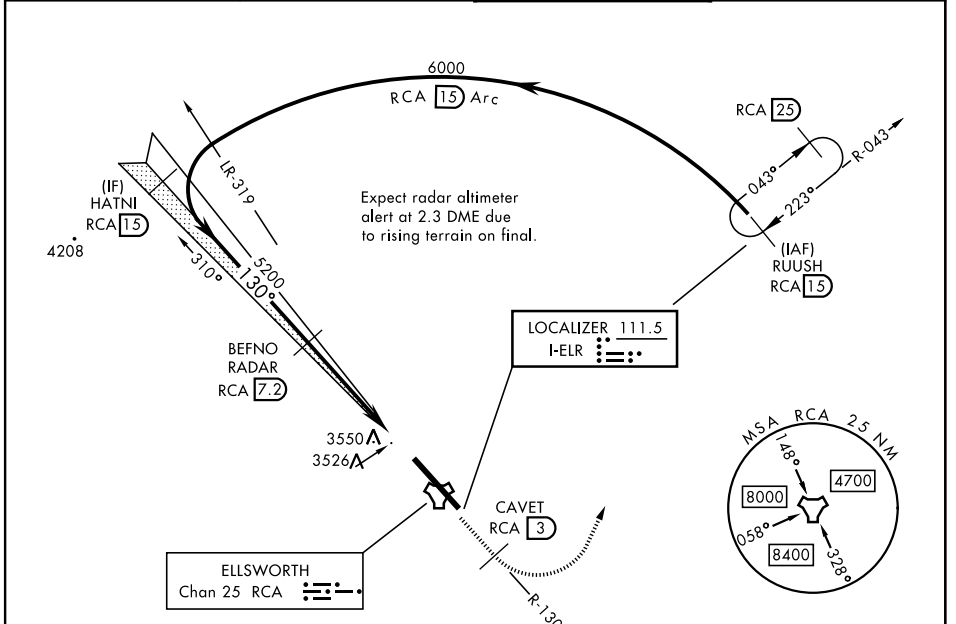


# ILS or LOC Y RWY 13

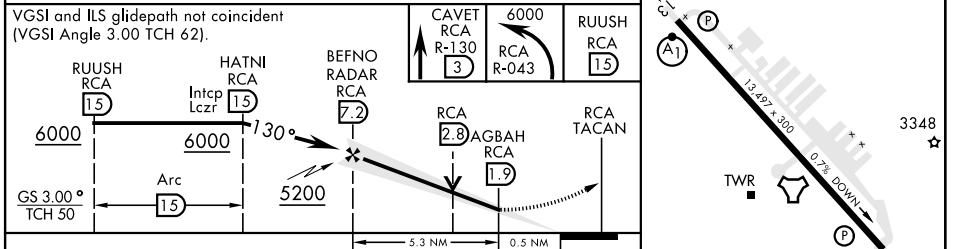
LOC I-ELR <b>111.5</b>	APCH CRS <b>130°</b>	Rwy Idg <b>13,497</b> TDZE <b>3276</b> Arpt Elev <b>3276</b>	[USAF]	ELLSWORTH AFB (KRCA)
---------------------------	-------------------------	--	--------	----------------------

RADAR or DME required.		ALSIF-1 	MISSED APPROACH: Track outbound RCA R-130 to 3 DME (CAVET), then turn left to join RCA R-043 to 15 DME (RUUSH) and hold. Maintain 6000.
<p>▼ *When ALS inop, increase RVR to 40 and vis to 3/4 mile.</p> <p>** When ALS inop, increase CAT AB RVR to 55 and vis to 1 mile, CAT CDE vis to 1 1/2 miles.</p> <p>***CAT E circling restricted to 28th BW aircraft only; 28th BW aircraft will remain within Class D airspace.</p>			

ATIS ★ <b>120.625 269.9</b>	APP CON <b>119.5 259.1</b>	TOWER ★ <b>126.05 253.5</b>	GND CON <b>121.8 275.8</b>
--------------------------------	-------------------------------	--------------------------------	-------------------------------



5243	ELEV 3276	TDZE 3276
EMERG SAFE ALT 100 NM 9800		



CATEGORY	A	B	C	D	E
S-ILS 13 *	3476/24		200	(200-1/2)	
S-LOC 13 **	3780/24 504 (600-1/2)		3780/55 504 (600-1)		
*** CIRCLING	3860-1 584 (600-1)	3880-1 604 (700-1)	3880-1 3/4 604 (700-1 3/4)	3980-2 1/4 704 (800-2 1/4)	4040-2 3/4 764 (800-2 3/4)

RAPID CITY, SOUTH DAKOTA	44°09'N-103°06'W	ELLSWORTH AFB (KRCA)
--------------------------	------------------	----------------------

# ILS or LOC Y RWY 13

NC-1, 13 JUN 2024 to 11 JUL 2024

NC-1, 13 JUN 2024 to 11 JUL 2024

HIRL Rwy 13-31	FAF to MAP 5.3 NM				
Knots	60	90	120	150	180
Min:Sec	5:18	3:32	2:39	2:07	1:46