

TACAN Y RWY 13

TACAN RCA Chan 25	APCH CRS 136°	Rwy ldg 13,497 TDZE 3276 Arpt Elev 3276
-----------------------------	-------------------------	--

[USAF]

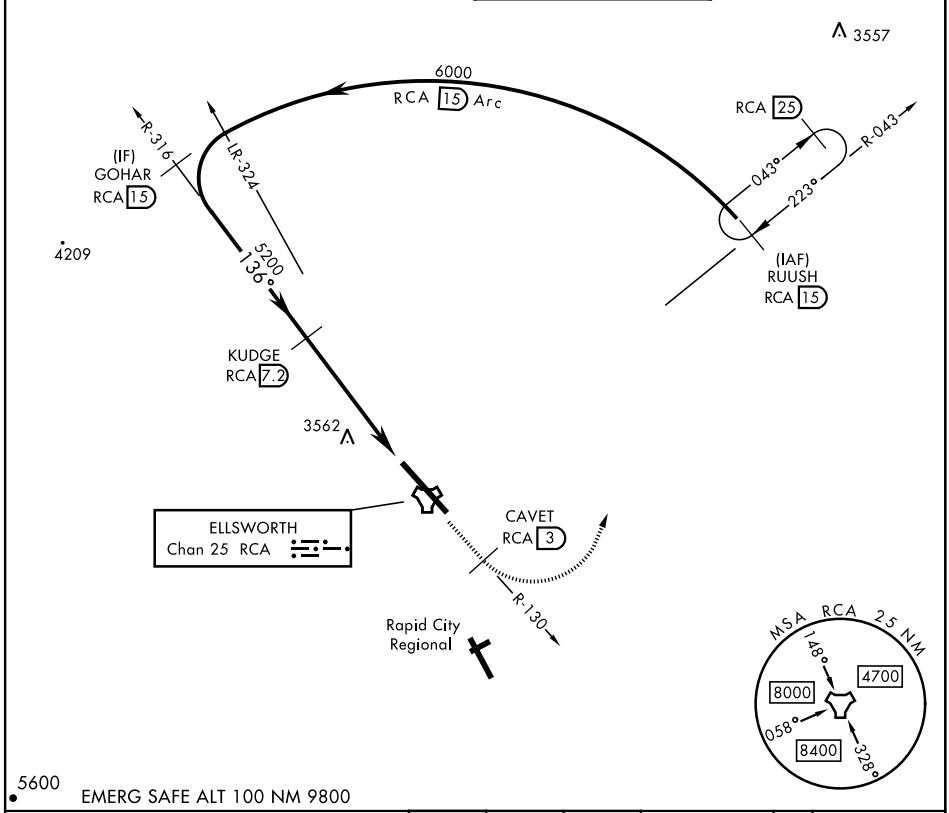
ELLSWORTH AFB (KRCA)

▼ *When ALS inop, increase CAT AB RVR to 55 and vis to 1 mile, CAT CDE vis to 1 $\frac{1}{2}$ miles.
 **CAT E circling restricted to 28th BW aircraft only; 28th BW aircraft will remain within Class D airspace.



MISSED APPROACH: Track outbound RCA R-130 to 3 DME (CAVET), then turn left to join RCA R-043 to RCA 15 DME (RUUSH) and hold. Maintain 6000.

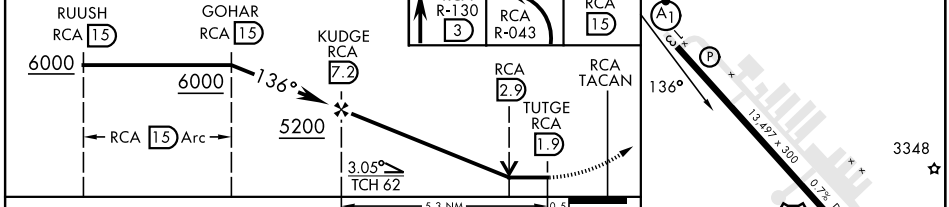
ATIS ★ 120.625 269.9	APP CON 119.5 259.1	TOWER ★ 126.05 253.5	GND CON 121.8 275.8
--------------------------------	-------------------------------	--------------------------------	-------------------------------



NC-1, 13 JUN 2024 to 11 JUL 2024

NC-1, 13 JUN 2024 to 11 JUL 2024

EMERG SAFE ALT 100 NM 9800



	RUUSH RCA 15		GOHAR RCA 15		KUDGE RCA 7.2		CAVET RCA R-130 3		RCA R-043 6000		RUUSH RCA 15		ELEV 3276	TDZE 3276
CATEGORY	A	B	C		D		E							
S-13*	3820/24	544 (600- $\frac{1}{2}$)	3820/60		544		(600-1 $\frac{1}{2}$)							
CIRCLING**	3860-1 584 (600-1)	3880-1 604 (700-1)	3880-1 $\frac{3}{4}$ 604 (700-1 $\frac{3}{4}$)	3980-2 $\frac{1}{4}$ 704 (800-2 $\frac{1}{4}$)	4040-2 $\frac{3}{4}$ 764 (800-2 $\frac{3}{4}$)		HIRL Rwy 13-31							

TACAN Y RWY 13