

(HOKEE3.HOKEE) 23334

# HOKEE THREE DEPARTURE

ROANOKE/BLACKSBURG RGNL (WOODRUM FLD) (R.O.A.)

AL-349 (FAA)

ROANOKE, VIRGINIA

ATIS  
 132.375  
 CLNC DEL  
 119.7  
 GND CON  
 121.9 257.8  
 ROANOKE TOWER  
 118.3 257.8  
 ROANOKE DEP CON  
 126.9 339.8

**TOP ALTITUDE:**  
**5000**

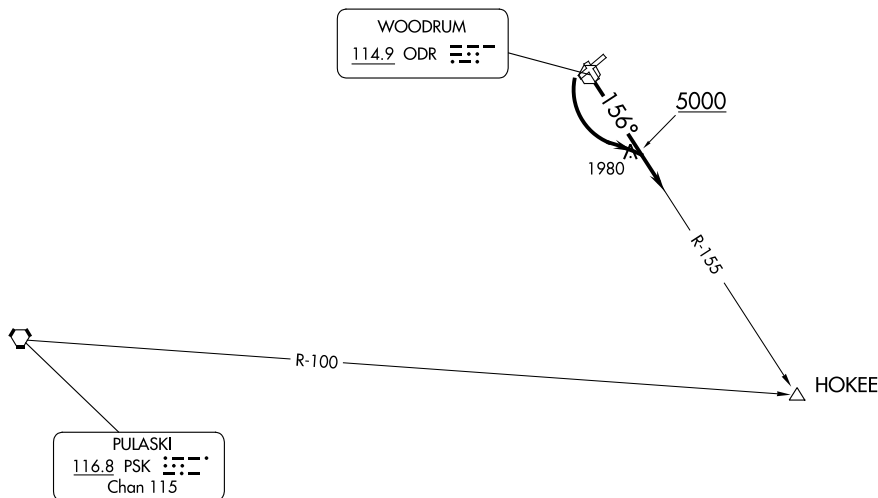
NOTE: RADAR required.

TAKEOFF MINIMUMS:

Rwys 6, 34: NA - Obstacles

Rwy 16: Standard with minimum climb of 260' per NM to 2300

Rwy 24: Standard with minimum climb of 205' per NM to 2800



NOTE: Chart not to scale.



### DEPARTURE ROUTE DESCRIPTION

**TAKEOFF RUNWAY 16:** Climb to 5000 on heading 156° to intercept ODR R-155 to Hokee INT. Expect RADAR vectors to filed/assigned route.

**TAKEOFF RUNWAY 24:** Climbing left turn to 5000 to intercept ODR R-155 to Hokee INT. Expect RADAR vectors to filed/assigned route.

# HOKEE THREE DEPARTURE

(HOKEE3.HOKEE) 10DEC15

ROANOKE, VIRGINIA

ROANOKE/BLACKSBURG RGNL (WOODRUM FLD) (R.O.A.)

NE-3, 13 JUN 2024 to 11 JUL 2024

NE-3, 13 JUN 2024 to 11 JUL 2024