

VOR ODR 114.9	APP CRS 236°	Rwy ldg TDZE Apt Elev N/A 1175
-------------------------	------------------------	---

VOR/DME-A

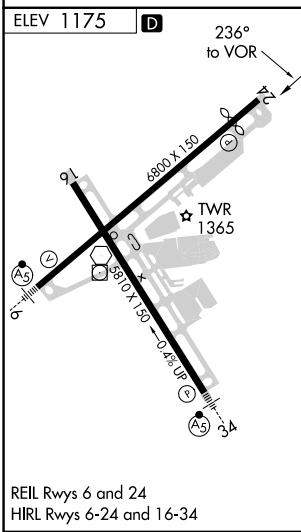
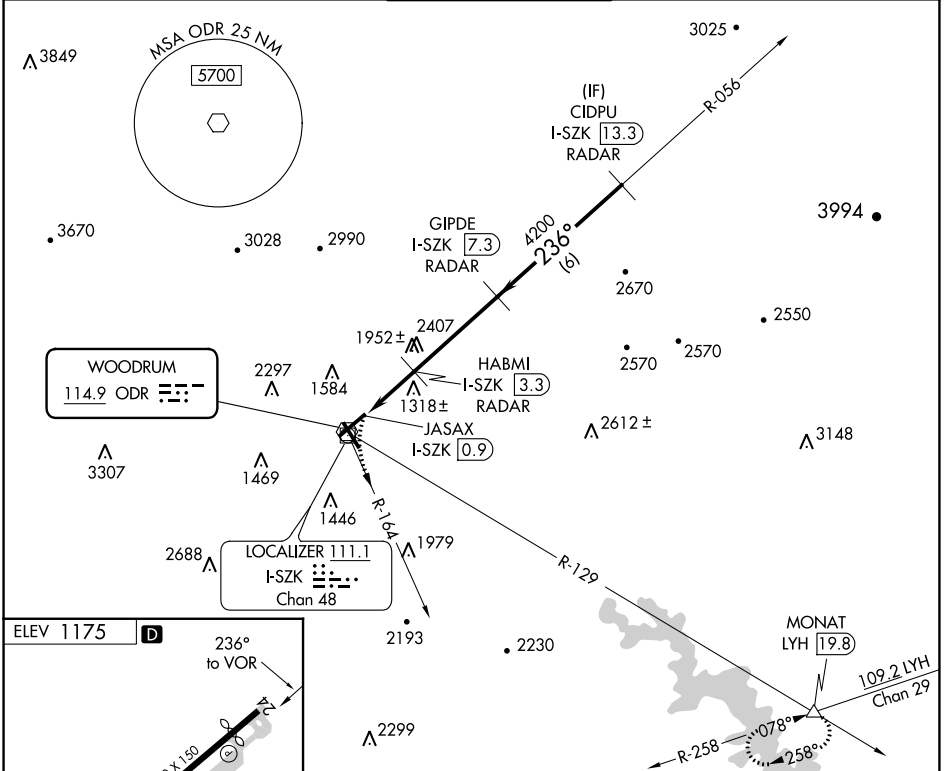
ROANOKE/BLACKSBURG RGNL (WOODRUM FLD) (R.O.A)

RADAR required.

⚠ Circling NA northwest of Rwy 6-24. DME from I-SZK LDA.
⚠ Simultaneous reception of ODR VOR and I-SZK DME required.
⚠ -13°C

MISSED APPROACH: Climbing left turn to 4000 on ODR VOR R-164 and LYH VOR/DME R-258 to MONAT/LYH 19.8 DME and hold.

ATIS 132.375	ROANOKE APP CON 126.9 339.8	ROANOKE TOWER 118.3 257.8	GND CON 121.9 257.8	CLNC DEL 119.7
------------------------	---------------------------------------	-------------------------------------	-------------------------------	--------------------------



4000 ODR R-164	LYH R-258	MONAT △	GIPDE I-SZK RADAR 7.3	CIDPU I-SZK RADAR 13.3
JASAX I-SZK 0.9		HABMI I-SZK RADAR 3.3		236° — 4200
2720		4200		4200
2.4 NM		4 NM		6 NM
CATEGORY	A	B	C	D
C CIRCLING	1740-1	565 (600-1)	2420-3 1245 (1300-3)	2800-3 1625 (1700-3)

VOR/DME-A

NE-3, 13 JUN 2024 to 11 JUL 2024

NE-3, 13 JUN 2024 to 11 JUL 2024