

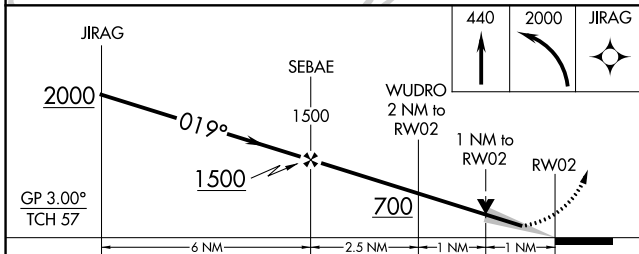
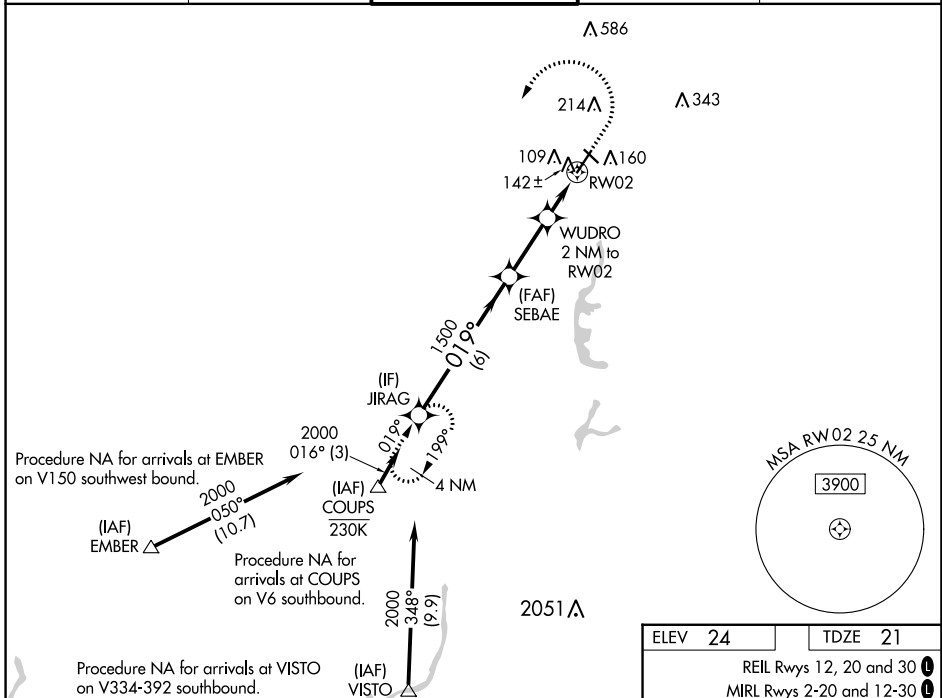
WAAS CH <b>62810</b> <b>W02A</b>	APP CRS <b>019°</b>	Rwy Idg <b>5503</b> TDZE <b>21</b> Apt Elev <b>24</b>
--	------------------------	---

# RNAV (GPS) RWY 2

SACRAMENTO EXEC (SAC)

RNP APCH-GPS.	MALSR	MISSED APPROACH: Climb to 440 then climbing left turn to 2000 direct JIRAG and hold.
<p>▼ For uncompensated Baro-VNAV systems, LNAV/VNAV NA below -1°C or above 54°C. For inop ALS, increase LNAV/VNAV all Cats visibility to 7/8 SM, increase LNAV all Cats visibility to 1 SM.</p>		

ATIS <b>125.5</b>	NORCAL APP CON <b>125.25 257.9</b>	EXEC TOWER* <b>119.5 (CTAF) 0 278.8</b>	GND CON <b>125.0</b>	UNICOM <b>122.95</b>
----------------------	---------------------------------------	--	-------------------------	-------------------------



ELEV 24	TDZE 21
REIL Rwy 12, 20 and 30	
MIRL Rwy 2-20 and 12-30	
△ 79±	△ 85±
△ 79±	△ 87±
TWR 94	3637 X 100
△ 183	100±
△ 61±	61±
△ 76±	
019° to RWY 2	

CATEGORY	A	B	C	D
LPV DA		221-1/2	200 (200-1/2)	
LNAV/VNAV DA		304-1/2	283 (300-1/2)	
LNAV MDA	400-1/2	379 (400-1/2)	400-5/8	379 (400-5/8)
CIRCLING	500-1 476 (500-1)	520-1 496 (500-1)	560-1 1/2 536 (600-1 1/2)	800-2 1/2 776 (800-2 1/2)

SW-2, 13 JUN 2024 to 11 JUL 2024

SW-2, 13 JUN 2024 to 11 JUL 2024