

STJ VORTAC <b>115.5</b> Chan <b>102</b>	APP CRS <b>348°</b>	Rwy Idg TDZE Apt Elev	<b>8061</b> <b>815</b> <b>827</b>
---	------------------------	-----------------------------	---

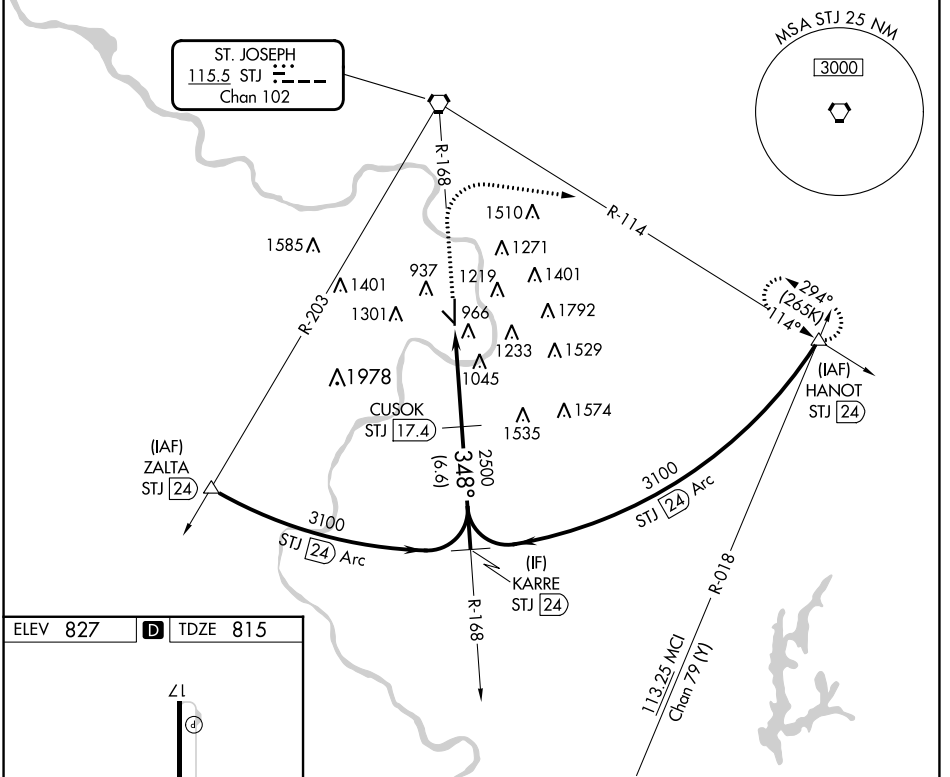
# VOR or TACAN RWY 35

ROSECRANS MEML (STJ)

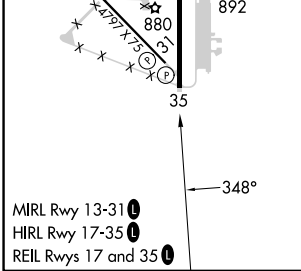
DME required.

**MISSED APPROACH:** Climb to 2700 then climbing right turn to 3100 on heading 090° and STJ VORTAC R-114 to HANOT/24 DME and hold.

ATIS <b>125.05</b>	ST. JOSEPH APP CON * <b>120.35 360.8</b>	ST. JOSEPH TOWER * <b>126.9 (CTAF) 239.0</b>	GND CON <b>121.9</b>	UNICOM <b>122.95</b>
-----------------------	---	---	-------------------------	-------------------------



ELEV 827	<b>D</b>	TDZE 815
----------	----------	----------



2700	3100	STJ R-114	HANOT	CUSOK STJ [17.4]	KARRE STJ [24]
↑	hdg 090°		△		
		STJ [11.9]	STJ [13.5]	3100	348°
		≤ 2.79°	2500		
		1.6	3.9 NM	6.6 NM	
CATEGORY	A	B	C	D	E
S-35	1360/55	545 (600-1)	1360-1½ 545 (600-1½)	1360-1¾ 545 (600-1¾)	1360-2 545 (600-2)
<b>C</b> CIRCLING	1400-1 573 (600-1)	1420-1 593 (600-1)	1620-2¼ 793 (800-2¼)	1640-2¾ 813 (900-2¾)	1760-3 933 (1000-3)

NC-3, 13 JUN 2024 to 11 JUL 2024

NC-3, 13 JUN 2024 to 11 JUL 2024