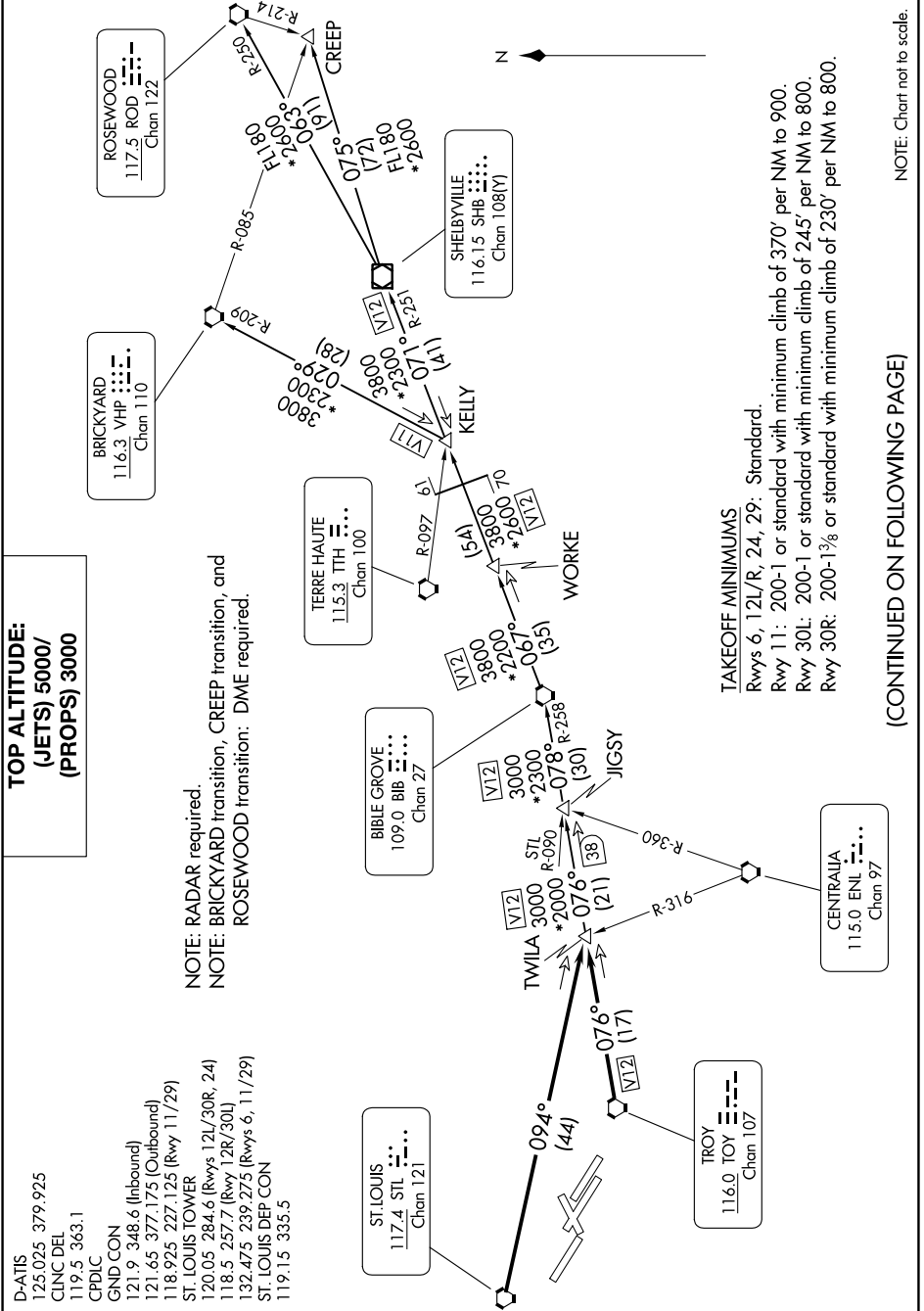


GATEWAY ONE DEPARTURE

AL-360 (FAA)

ST LOUIS LAMBERT INTL (STL)
ST. LOUIS, MISSOURI

NC-3, 13 JUN 2024 to 11 JUL 2024



GATEWAY ONE DEPARTURE

(GATWY1.TWILA) 08NOV18

ST. LOUIS, MISSOURI
ST LOUIS LAMBERT INTL (STL)

TAKEOFF MINIMUMS
 Rwy 6, 12L/R, 24, 29: Standard.
 Rwy 11: 200-1 or standard with minimum climb of 370' per NM to 900.
 Rwy 30L: 200-1 or standard with minimum climb of 245' per NM to 800.
 Rwy 30R: 200-1 3/4 or standard with minimum climb of 230' per NM to 800.

(CONTINUED ON FOLLOWING PAGE)

NOTE: Chart not to scale.

NC-3, 13 JUN 2024 to 11 JUL 2024