

LOC/DME I-OGZ 111.95 Chan 56(Y)	APP CRS 123°	Rwy ldg TDZE Apt Elev	9000 618 618
--	------------------------	-----------------------------	---

ILS or LOC RWY 11

ST LOUIS LAMBERT INTL (STL)

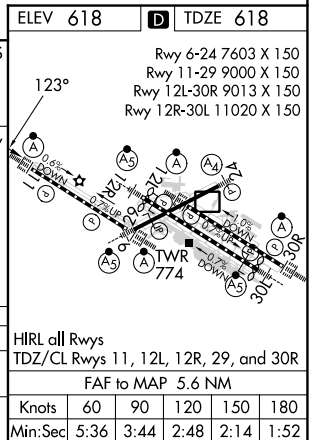
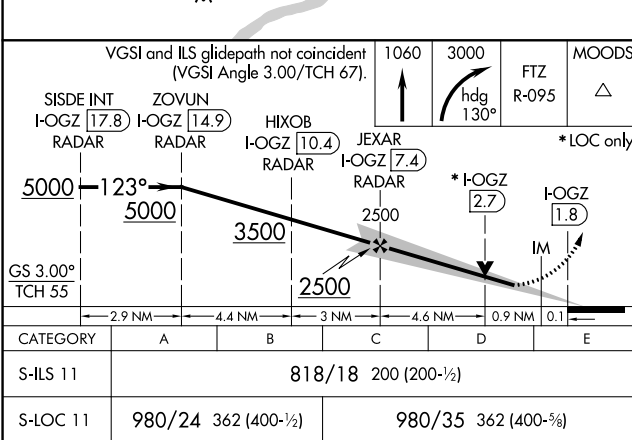
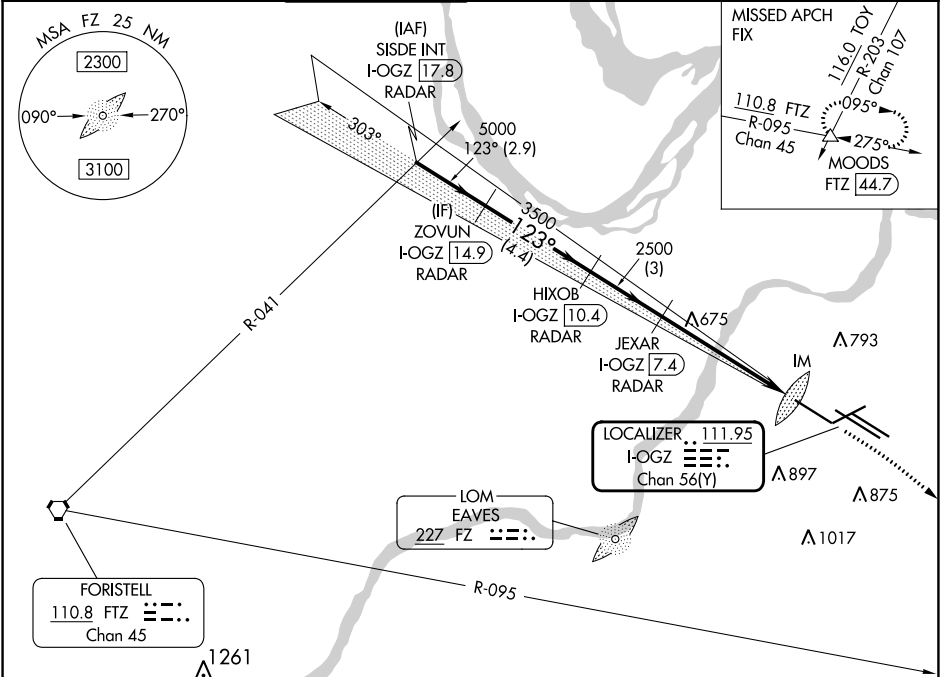
RADAR required for procedure entry. DME or RADAR required.

Simultaneous approach authorized with Rwy 12R/L. Disregard OM signal associated with ILS to Rwy 12R. For inop ALS, increase S-ILS Cat E visibility to RVR 4000, and S-LOC Cat C/D/E visibility to RVR 5500.



MISSED APPROACH: Climb to 1060 then climbing right turn to 3000 on heading 130° and FTZ R-095 to MOODS INT/FTZ 44.7 DME and hold.

D-ATIS 125.025 379.925	ST. LOUIS APP CON 132.125 360.6	ST. LOUIS TOWER 132.475 239.275	GND CON 121.9 348.6 (Inbound) 121.65 377.175 (Outbound) 118.925 227.125 (Rwy 11/29)	CLNC DEL 119.5 363.1	CPDLC
--	---	---	---	--------------------------------	-------



NC-3, 13 JUN 2024 to 11 JUL 2024

NC-3, 13 JUN 2024 to 11 JUL 2024