

| | | |
|--|------------------------|---|
| LOC/DME I-JAK 110.3 Chan 40 | APP CRS 064° | Rwy Idg 7323 TDZE 551 Apt Elev 618 |
|--|------------------------|---|

ILS or LOC RWY 6

ST LOUIS LAMBERT INTL (STL)

DME or RADAR required. DME or RADAR required for procedure entry.



MISSED APPROACH: Climb to 2200 then climbing left turn to 3000 direct STL VORTAC and hold, continue climb-in-hold to 3000.

For inop ALS, increase S-ILS 6 Cat E visibility to RVR 4000 and S-LOC 6 Cat C/D/E visibility to 1/8 SM.

| | | | | | |
|--|---|---|---|--------------------------------|-------|
| D-ATIS 125.025 379.925 | ST. LOUIS APP CON 132.125 360.6 | ST. LOUIS TOWER 132.475 239.275 | GND CON 121.9 348.6 (Inbound) 121.65 377.175 (Outbound) 118.925 227.125 (Rwy 11/29) | CLNC DEL 119.5 363.1 | CPDLC |
|--|---|---|---|--------------------------------|-------|

ALTERNATE MISSED APCH FIX

090°
270°
R-090

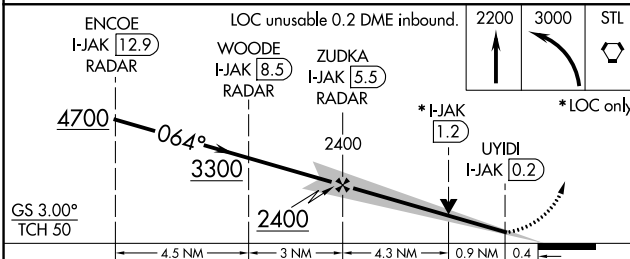
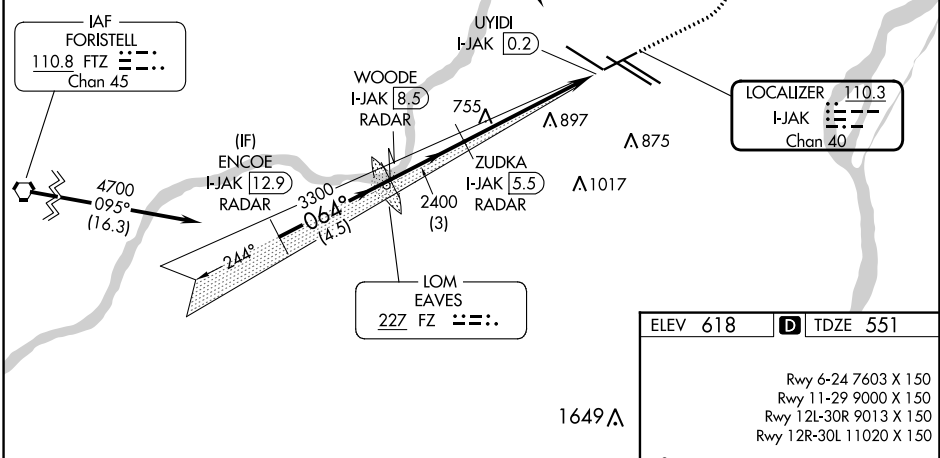
TROY
TOY
116.0
Chan 107

MSA FZ 25 NM

2300
3100

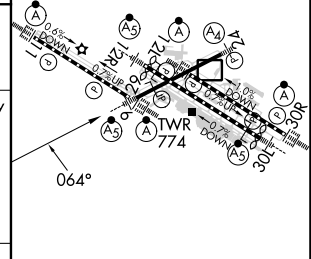
090°
270°

Procedure NA for arrival on FTZ VORTAC airway radials 082 CW 095.



| | |
|----------|----------|
| ELEV 618 | TDZE 551 |
|----------|----------|

| |
|-------------------------|
| Rwy 6-24 7603 X 150 |
| Rwy 11-29 9000 X 150 |
| Rwy 12L-30R 9013 X 150 |
| Rwy 12R-30L 11020 X 150 |



| CATEGORY | A | B | C | D | E |
|----------|----------------------|---------------|---------|---|-------------|
| S-ILS 6 | 751/24 200 (200-1/2) | | | | |
| S-LOC 6 | 1020/24 | 469 (500-1/2) | 1020/50 | | 469 (500-1) |

| | | | | | |
|---------|------|------|------|------|------|
| Knots | 60 | 90 | 120 | 150 | 180 |
| Min:Sec | 5:18 | 3:32 | 2:39 | 2:07 | 1:46 |