

# JAHNY SIX DEPARTURE (RNAV)

AL-360 (FAA)

ST LOUIS LAMBERT INTL (STL)  
ST. LOUIS, MISSOURI

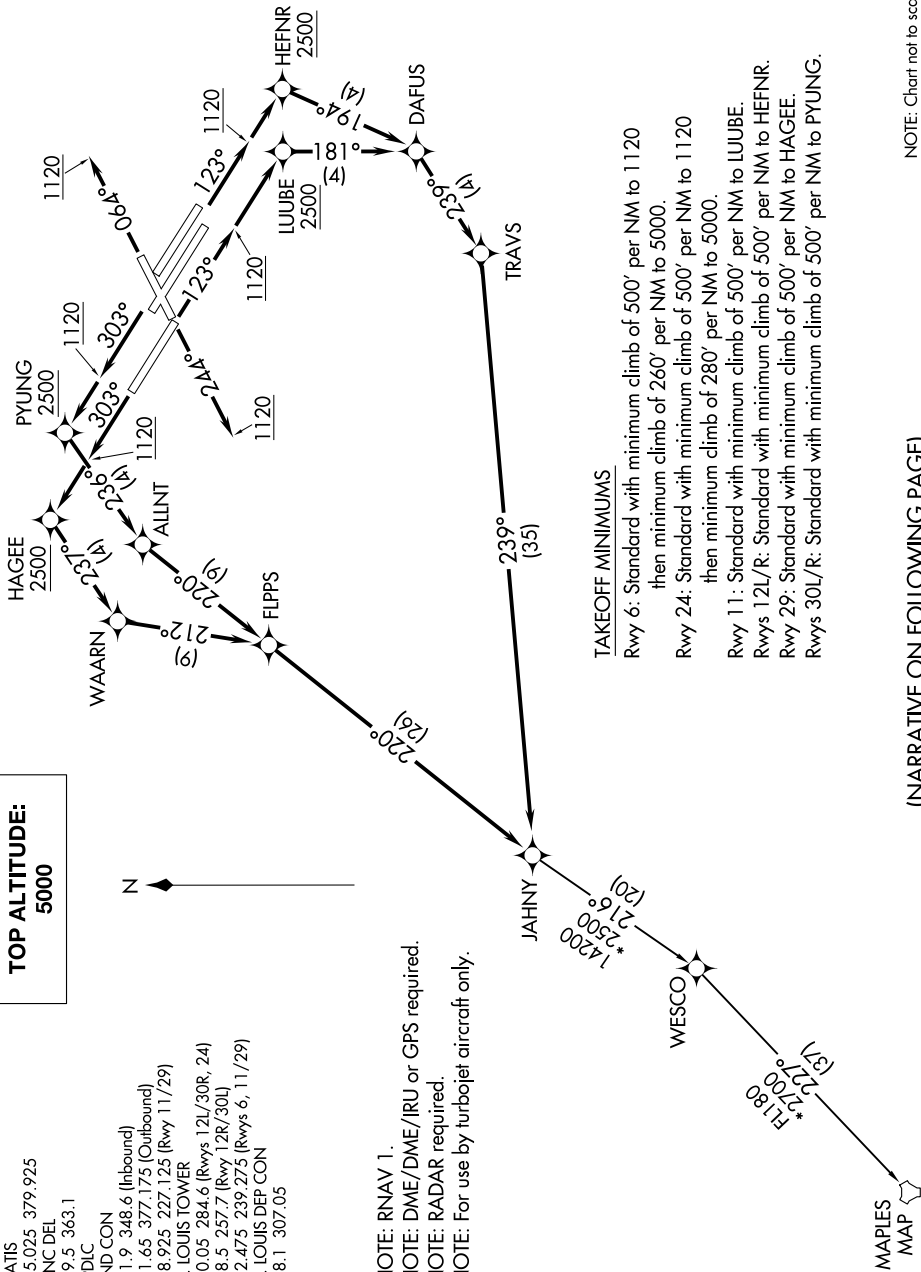
NC-3, 13 JUN 2024 to 11 JUL 2024

**TOP ALTITUDE:  
5000**

D-ATIS 125.025 379.925  
 CLNC DEL 119.5 363.1  
 CPDLC  
 GND CON 121.9 348.6 (Inbound)  
 121.65 377.175 (Outbound)  
 118.925 227.125 (Rwy 11/29)  
 ST. LOUIS TOWER 120.05 284.6 (Rwys 12L/30R, 24)  
 118.5 257.7 (Rwy 12R/30L)  
 ST. LOUIS DEP CON 132.475 239.275 (Rwys 6, 11/29)  
 128.1 307.05



NOTE: RNAV 1.  
 NOTE: DME/DME/IRU or GPS required.  
 NOTE: RADAR required.  
 NOTE: For use by turbojet aircraft only.



### TAKEOFF MINIMUMS

Rwy 6: Standard with minimum climb of 500' per NM to 1120 then minimum climb of 260' per NM to 5000.  
 Rwy 24: Standard with minimum climb of 500' per NM to 1120 then minimum climb of 280' per NM to 5000.  
 Rwy 11: Standard with minimum climb of 500' per NM to LUUBE.  
 Rws 12L/R: Standard with minimum climb of 500' per NM to HEFNR.  
 Rwy 29: Standard with minimum climb of 500' per NM to HAGEE.  
 Rws 30L/R: Standard with minimum climb of 500' per NM to PYUNG.

(NARRATIVE ON FOLLOWING PAGE)

NOTE: Chart not to scale.

NC-3, 13 JUN 2024 to 11 JUL 2024

# JAHNY SIX DEPARTURE (RNAV)

