

# JHART SEVEN DEPARTURE (RNAV)

AL-360 (FAA)

ST LOUIS LAMBERT INTL (STL)  
ST. LOUIS, MISSOURI

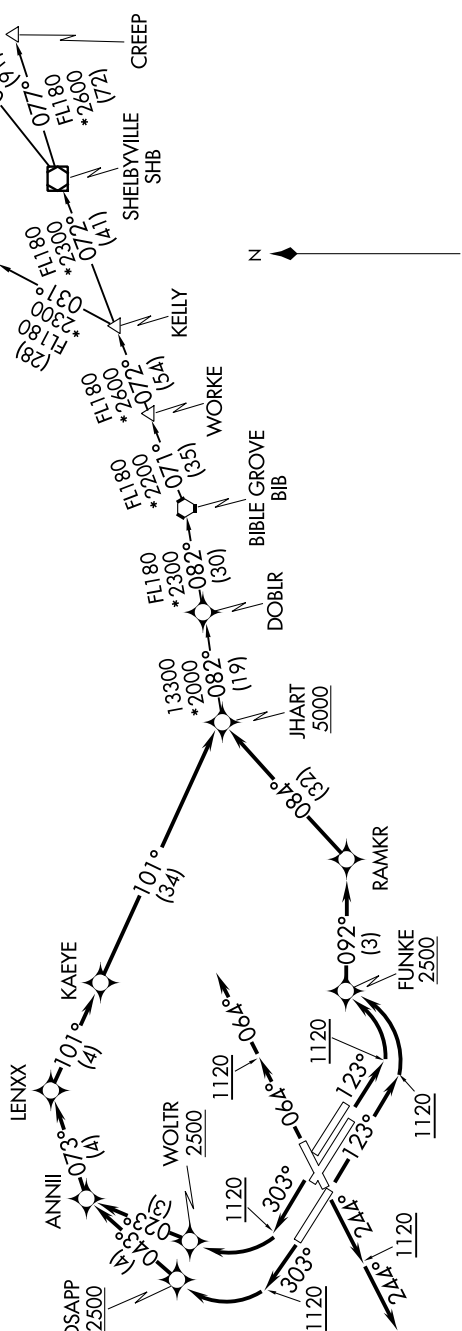
**TOP ALTITUDE:  
5000**

### TAKEOFF MINIMUMS

- Rwy 6: Standard with minimum climb of 500' per NM to 1120.
- Rwy 24: Standard with minimum climb of 500' per NM to 1120.
- Rwys 11, 12L/R: Standard with minimum climb of 500' per NM to 1120.
- Rwy 29: Standard with minimum climb of 500' per NM to 1120.
- Rwys 30L/R: Standard with minimum climb of 500' per NM to 1120.

- D-ATIS 125.025 379.925
- CLNC DEL 119.5 363.1
- CPDLC
- GND CON 121.9 348.6 (Inbound)
- 121.65 377.175 (Outbound)
- 118.925 227.125 (Rwy 11/29)
- ST. LOUIS TOWER 120.05 284.6 (Rwys 12L/30R, 24)
- 118.5 257.7 (Rwy 12R/30L)
- 132.475 239.275 (Rwys 6, 11/29)
- ST. LOUIS DEP CON 119.15 335.5

- NOTE: RNAV 1.
- NOTE: DME/DME/IRU or GPS required.
- NOTE: RADAR required.
- NOTE: For use by turbojet aircraft only.



NOTE: Chart not to scale.

(NARRATIVE ON FOLLOWING PAGE)

# JHART SEVEN DEPARTURE (RNAV)