

APP CRS Rwy Idg **10679**  
 303° TDZE **583**  
 Apt Elev **618**

# RNAV (RNP) Z RWY 30L

ST LOUIS LAMBERT INTL (STL)

**RNP AR APCH.**

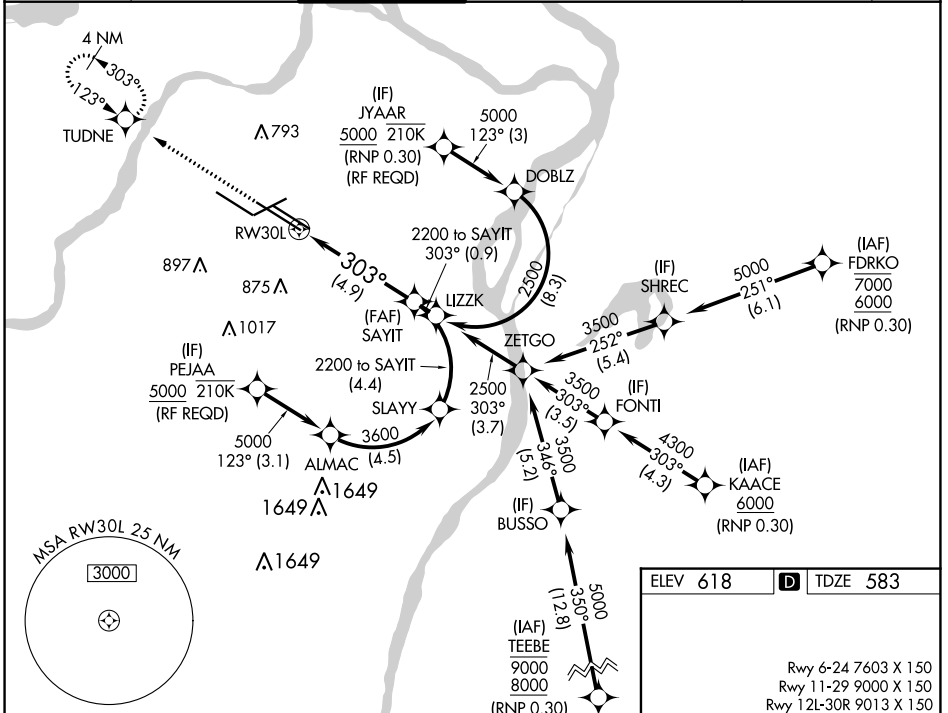
Use of FD or AP required during simultaneous operations. Simultaneous approach authorized with Rwy 29, except for arrivals at JYAAR and PEJAA. For uncompensated Baro-VNAV systems, procedure NA below -18°C or above 54°C. For inop ALS, increase RNP 0.15 all Cats visibility to RVR 5500 and RNP 0.30 all Cats visibility to RVR 6000.

MALSR



MISSED APPROACH: Climb to 3000 direct TUDNE and hold, continue climb-in-hold to 3000.

D-ATIS <b>125.025</b> <b>379.925</b>	ST. LOUIS APP CON <b>132.125 360.6</b>	ST. LOUIS TOWER <b>118.5 257.7</b>	GND CON <b>121.9 348.6</b> (Inbound) <b>121.65 377.175</b> (Outbound) <b>118.925 227.125</b> (Rwy 11/29)	CLNC DEL <b>119.5 363.1</b>	CPDLC
--	---	---------------------------------------	---	--------------------------------	-------

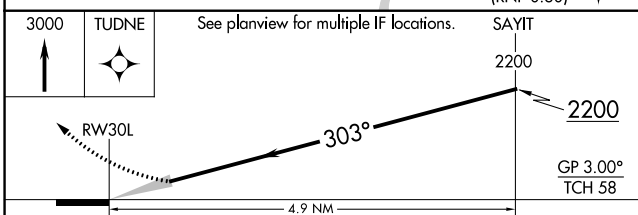


NC-3, 13 JUN 2024 to 11 JUL 2024

NC-3, 13 JUN 2024 to 11 JUL 2024

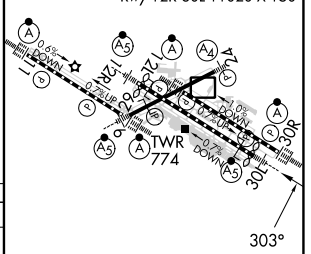
ELEV 618 **D** TDZE 583

Rwy 6-24 7603 X 150  
 Rwy 11-29 9000 X 150  
 Rwy 12L-30R 9013 X 150  
 Rwy 12R-30L 11020 X 150



CATEGORY	A	B	C	D
RNP 0.15 DA		947/35	364 (400-56)	
RNP 0.30 DA		998/40	415 (400-34)	

**AUTHORIZATION REQUIRED**



HIRL all Rwys  
 TDZ/CL Rwys 11, 12L, 12R, 29, and 30R