

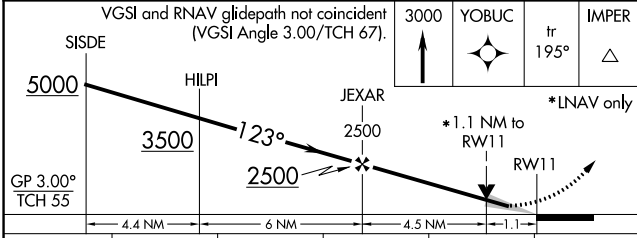
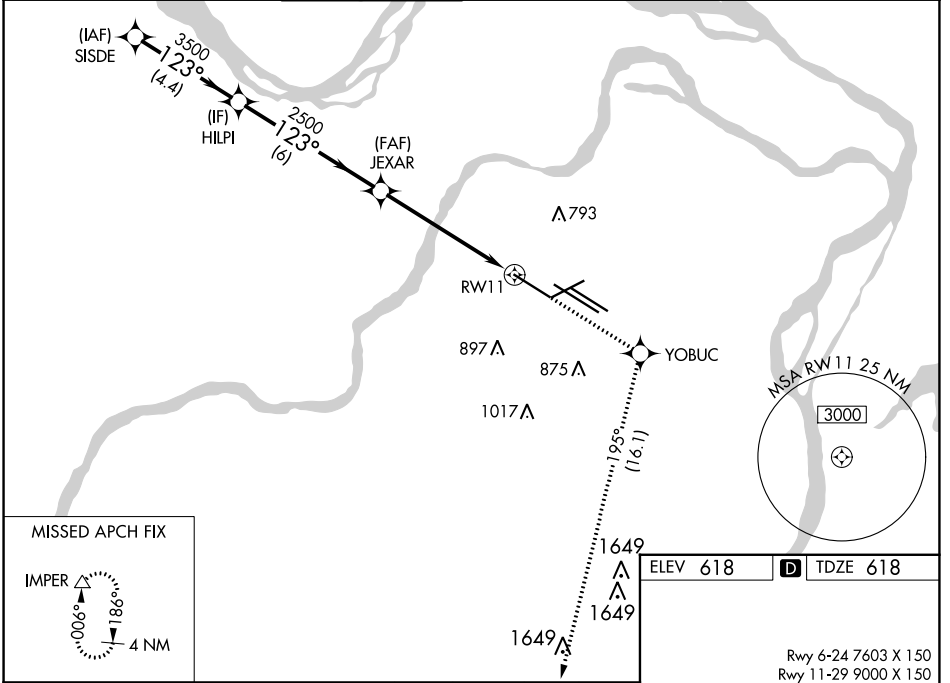
WAAS CH 82699 W11A	APP CRS 123°	Rwy Idg TDZE Apt Elev	9000 618 618
--	------------------------	-----------------------------	---

RNAV (GPS) Y RWY 11

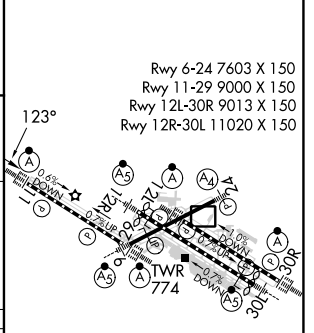
ST LOUIS LAMBERT INTL (STL)

RNP APCH.	<p>Simultaneous approach authorized. Use of FD or AP required during simultaneous operations. LNAV procedure NA during simultaneous operations. For uncompensated Baro-VNAV systems, LNAV/VNAV NA below -16°C or above 54°C. For inop ALS, increase LPV Cat E visibility to RVR 4000 and LNAV Cat E visibility to 1¼ SM.</p>	<p>ALSF-2</p>	<p>MISSED APPROACH: Climb to 3000 direct YOBUK and on track 195° to IMPER and hold.</p>
-----------	--	---------------	---

D-ATIS 125.025 379.925	ST. LOUIS APP CON 132.125 360.6	ST. LOUIS TOWER 132.475 239.275	GND CON 121.9 348.6 (Inbound) 121.65 377.175 (Outbound) 118.925 227.125 (Rwy 11/29)	CLNC DEL 119.5 363.1	CPDLC
--	---	---	---	--------------------------------	-------



ELEV 618	D TDZE 618
----------	-------------------



CATEGORY	A	B	C	D	E
LPV DA		868/18	250 (300-½)		
LNAV/VNAV DA		960/40	342 (400-¾)		
LNAV MDA	1040/24	422 (500-½)	1040/40 422 (500-¾)	1040/50	422 (500-1)

HIRL all Rwys
TDZ/CL Rwys 11, 12L, 12R, 29, and 30R

NC-3, 13 JUN 2024 to 11 JUL 2024

NC-3, 13 JUN 2024 to 11 JUL 2024