

ST. LOUIS, MISSOURI

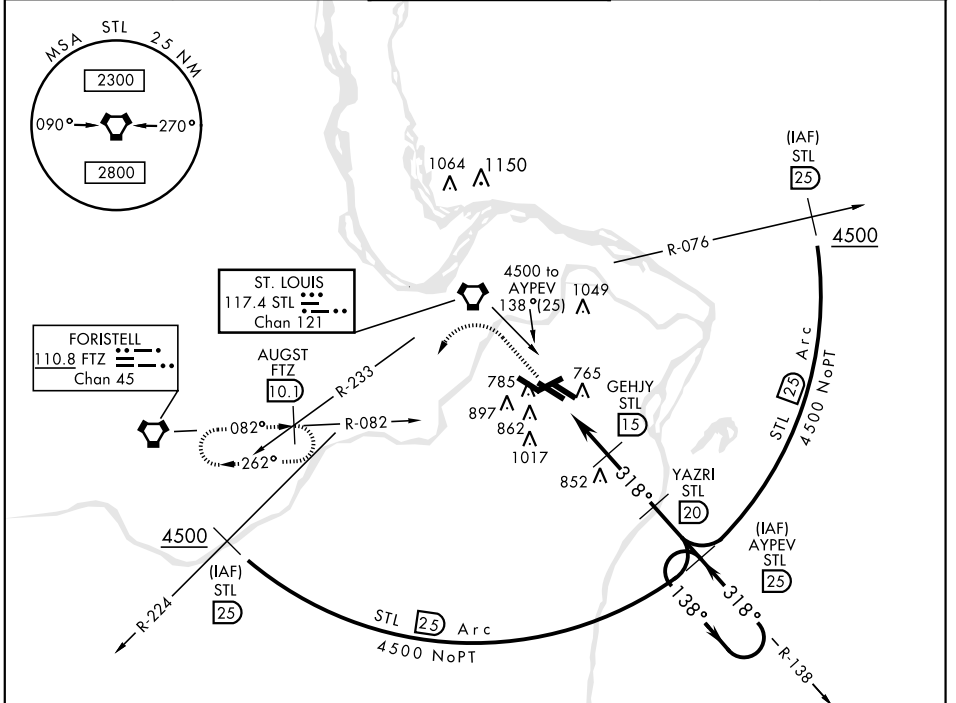
# TACAN RWY 30L

VORTAC STL <b>117.4</b> Chan <b>121</b>	APCH CRS <b>318°</b>	Rwy ldg <b>10,818</b> TDZE <b>583</b> Arprt Elev <b>618</b>
-----------------------------------------------	-------------------------	-------------------------------------------------------------------

AL-360 [USAF]

ST. LOUIS LAMBERT INTL (KSTL)

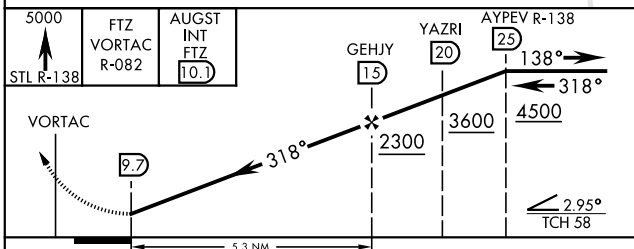
<p>▼ * Inoperative table does not apply.</p> <p>▲ NA</p>		<p>MALSR</p>	<p>MISSED APPROACH: Climb to 5000 via STL R-138 and FTZ VORTAC R-082 to AUGST INT/FTZ 10.1 DME and hold.</p>			
<p>ATIS</p> <p><b>125.025 379.925</b></p>	<p>ST. LOUIS APP CON</p> <p><b>121.02 338.25</b></p>	<p>N</p> <p><b>120.05</b></p> <p><b>284.6</b></p>	<p>ST. LOUIS TOWER</p> <p>W</p> <p><b>132.475</b></p> <p><b>239.275</b></p>	<p>S</p> <p><b>118.5</b></p> <p><b>257.7</b></p>	<p>GND CON</p> <p>(Inbd) <b>121.9 348.6</b></p> <p>(Outbd) <b>121.65 377.175</b></p> <p>(West) <b>118.925 227.125</b></p>	<p>CLNC DEL</p> <p><b>119.5 363.1</b></p>



NC-3, 13 JUN 2024 to 11 JUL 2024

NC-3, 13 JUN 2024 to 11 JUL 2024

EMERG SAFE ALT 100 NM 3500



ELEV 618	TDZE 583
----------	----------

Rwy 6-24 7607 x 150  
 Rwy 11-29 9001 x 150  
 Rwy 12L-30R 9003 x 150  
 Rwy 12R-30L 11,019 x 200

Rwy 12R ldg 10,552'  
 Rwy 30L ldg 10,818'

HIRL All Rwy  
 REIL Rwy 12L  
 TDZL/CL Rwy 11-29,  
 12L-30R, and 12R

CATEGORY	A	B	C	D	E
S-30L *	1100/50	517 (500-1)	1100-1½ 517(500-1½)	1100-1¾	517 (500-1¾)
CIRCLING	NOT AUTHORIZED				

ST. LOUIS, MISSOURI  
 Amdt 1 18200

38°45'N-90°22'W

ST. LOUIS LAMBERT INTL (KSTL)

# TACAN RWY 30L