

ATIS
124.55
GND CON
121.9
SALEM TOWER ★
119.1 257.2

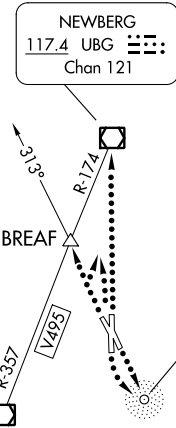
BATTLE GROUND
116.6 BTG
Chan 113

NEWBERG
117.4 UBG
Chan 121

CORVALLIS
115.4 CVO
Chan 101

NEWPORT
117.1 ONP
Chan 118

EUGENE
112.9 EUG
Chan 76



NOTE: RADAR required.
NOTE: Seattle Center will assign magnetic headings between 310° CW 130°.
NOTE: This is a RADAR vector SID route.
NOTE: Route depicted is lost communications procedures only.

DESCHUTES
117.6 DSD
Chan 123

TAKEOFF MINIMUMS

- Rwy 13: Standard with minimum climb of 270' per NM to 4000.
- Rwy 16: Standard with minimum climb of 570' per NM to 2000 or 400-2 1/2 with minimum climb of 260' per NM to 4000.
- Rwy 31: Standard with minimum climb of 230' per NM to 2500.
- Rwy 34: Standard with minimum climb of 225' per NM to 6700.

NOTE: Chart not to scale.

NW-1, 13 JUN 2024 to 11 JUL 2024

NW-1, 13 JUN 2024 to 11 JUL 2024



DEPARTURE ROUTE DESCRIPTION

TAKEOFF RUNWAYS 13, 31, 34: Climb to assigned altitude and heading between 310° CW 130° from DER, thence

TAKEOFF RUNWAY 16: Climbing left turn to assigned heading between 340° CW to 130° from DER to assigned altitude, thence

. . . . expect RADAR vectors with Seattle Center to assigned route. Expect filed altitude 10 minutes after departure.

LOST COMMUNICATIONS:

If not in contact with Seattle Center after reaching 2000, continue climb to assigned altitude.

TAKEOFF RUNWAYS 13 and 16: (Runway 16 turn left) proceed direct to SL NDB thence on (assigned route) (ADF required).

TAKEOFF RUNWAYS 31 and 34: (Runway 31 turn right) proceed direct to UBG VOR/DME thence on (assigned route).

HELICOPTERS ONLY - RUNWAYS 31 and 34: (Runway 34 turn left) intercept and proceed outbound on the SL NDB 313° bearing to BREF INT, thence on (assigned route) (ADF required).