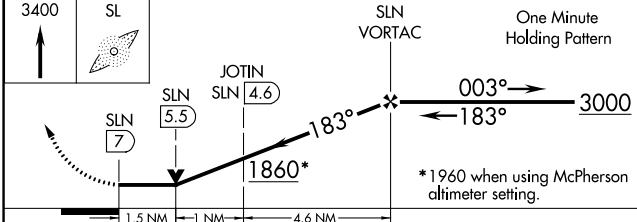
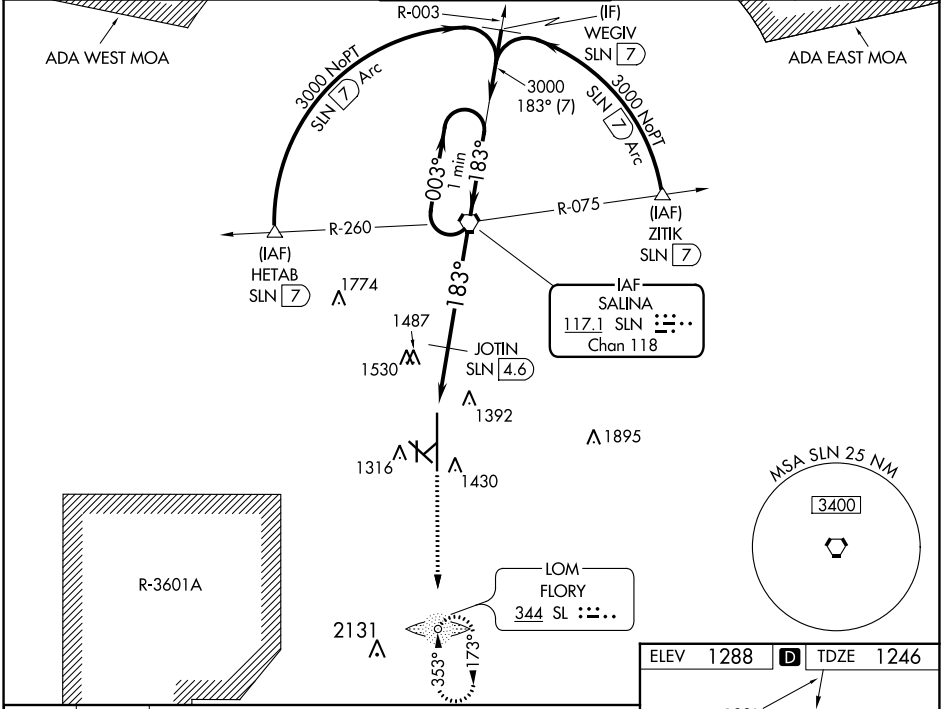


VORTAC SLN <b>117.1</b> Chan <b>118</b>	APP CRS <b>183°</b>	Rwy Idg <b>12300</b> TDZE <b>1246</b> Apt Elev <b>1288</b>
---	------------------------	--

# VOR RWY 17

SALINA RGNL (SLN)

<b>▼</b> Inoperative table does not apply to Cat C/D/E. <b>▲</b> Circling NA for Cat D/E southwest of Rwy 12-30. ADF required.	MALS 	MISSED APPROACH: Climb to 3400 direct SL LOM and hold.		
ATIS <b>120.15</b>	KANSAS CITY CENTER <b>134.9 363.2</b>	SALINA TOWER * <b>119.3 (CTAF) 0 257.7</b>	GND CON <b>121.9 360.8</b>	UNICOM <b>122.95</b>



CATEGORY	A	B	C	D	E
S-17	1860-3/4 614 (600-3/4)		1860-1 3/4 614 (600-1 3/4)	1860-2 614 (600-2)	1860-2 1/4 614 (600-2 1/4)
CIRCLING	1860-1 572 (600-1)		1860-1 3/4 572 (600-1 3/4)	1860-2 572 (600-2)	1920-2 1/4 632 (700-2 1/4)
JOTIN FIX MINIMUMS					
S-17	1760-3/4 514 (500-3/4)		1760-1 1/2 514 (500-1 1/2)	1760-1 3/4 514 (500-1 3/4)	
CIRCLING	1820-1 532 (600-1)	1840-1 552 (600-1)	1860-1 1/2 572 (600-1 1/2)	1860-2 572 (600-2)	1920-2 1/4 632 (700-2 1/4)

ELEV 1288	<b>D</b> TDZE 1246
-----------	--------------------

Approach diagram showing 183° heading, 3400 MSA SLN 25 NM, and various altitudes like 150, 1347, 135, 100, 80, 40, 36, 35.

HIRL Rwy 17-35  
MIRL Rwy 12-30  
TWR 1388  
FAF to MAP 7 NM

Knots	60	90	120	150	180
Min:Sec	7:00	4:40	3:30	2:48	2:20

NC-2, 13 JUN 2024 to 11 JUL 2024

NC-2, 13 JUN 2024 to 11 JUL 2024