

LOC I-SNS 108.5	APP CRS 315°	Rwy Idg TDZE Apt Elev	4825 82 84
---------------------------	------------------------	-----------------------------	---------------------------------------

LOC RWY 31

SALINAS MUNI (SNS)

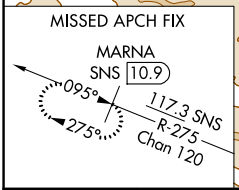
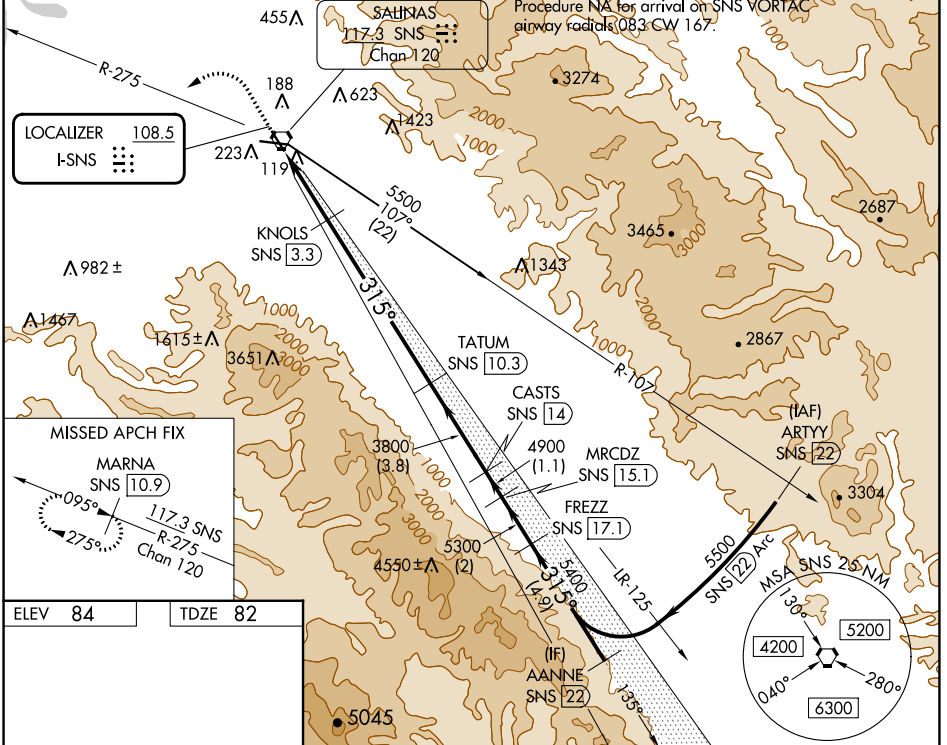
DME required.

⚠ DME from SNS VORTAC. DME use requires simultaneous reception of I-SNS and SNS DME. Circling NA for Cats C and D northeast of Rwy 13 and north of Rwy 26. For inop ALS, increase S-LOC-31 visibility Cats C and D to RVR 5000.

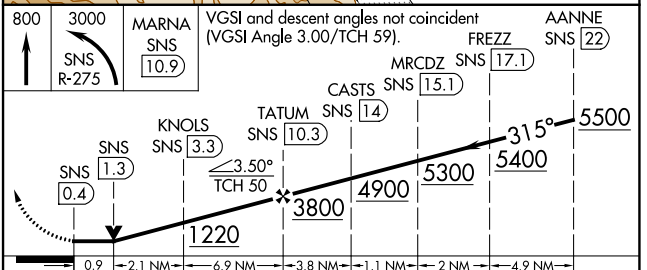
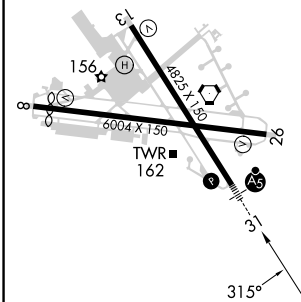
MALSR
AS

MISSED APPROACH: Climb to 800 then climbing left turn to 3000 on SNS VORTAC R-275 to MARNA/SNS 10.9 DME and hold, continue climb-in-hold to 3000.

ATIS 124.85	NORCAL APP CON 133.0 251.15	SALINAS TOWER * 119.525 (CTAF) 239.3	GND CON 121.7	UNICOM 123.0
-----------------------	---------------------------------------	--	-------------------------	------------------------



ELEV 84	TDZE 82
---------	---------



CATEGORY	A	B	C	D
S-LOC 31	420/24	338 (400-½)	420/40	338 (400-¾)
CIRCLING	540-1	456 (500-1)	800-2 716 (800-2)	1740-3 1656 (1700-3)

- HIRL Rwy 13-31
- MIRL Rwy 8-26
- REIL Rwy 13 and 26

SW-2, 13 JUN 2024 to 11 JUL 2024

SW-2, 13 JUN 2024 to 11 JUL 2024