

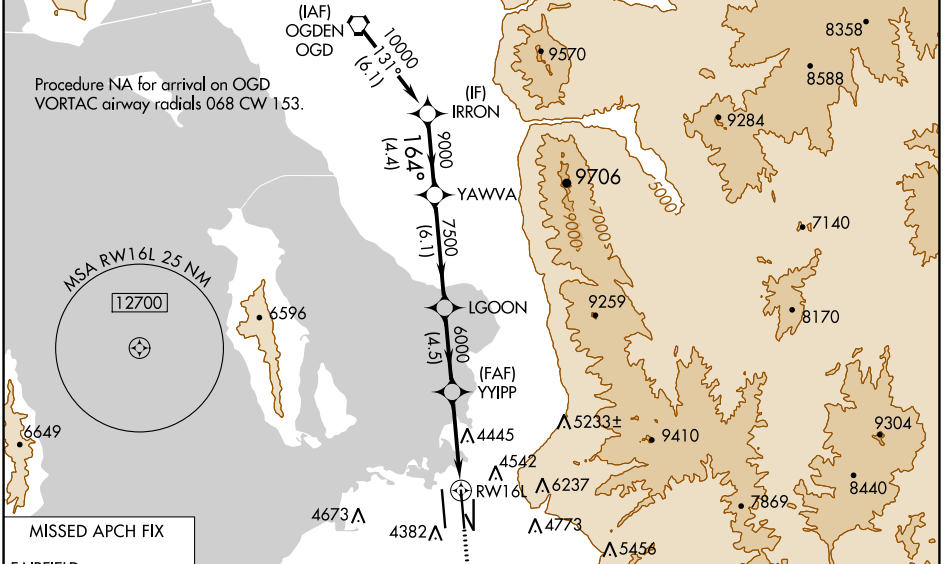
WAAS CH 70546 W16B	APP CRS 164°	Rwy Idg 12002 TDZE 4231 Apt Elev 4231
--	------------------------	--

RNAV (GPS) RWY 16L

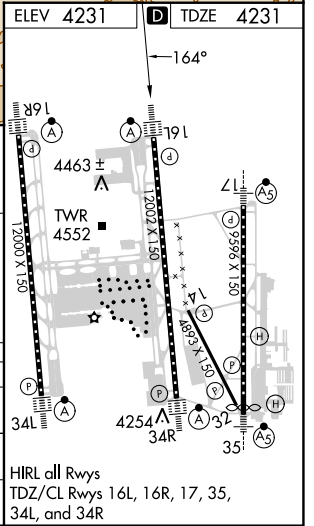
SALT LAKE CITY INTL (SLC)

RNP APCH - GPS.		ALSF-2	MISSED APPROACH: Climb to 10000 direct RULFO and on track 167° to FFU VORTAC and hold.
<p>▼ LNAV procedure NA during simultaneous operations. Simultaneous approach authorized. Use of FD or AP required during simultaneous operations. For uncompensated Baro-VNAV systems, LNAV/VNAV NA below -10°C or above 45°C. For inop ALS, increase LPV Cat E visibility to RVR 4000, increase LNAV/VNAV Cat A visibility to RVR 4500, increase Cats C/D visibility to RVR 5500, increase Cat E visibility to 6000, and increase LNAV Cat E visibility to 1½ SM.</p>			

D-ATIS 124.75 125.625	SALT LAKE CITY APP CON 125.7 284.6	SALT LAKE CITY TOWER 119.05 257.8	GND CON 123.775 348.6	CLNC DEL 127.3 379.975	CPDLC
---------------------------------	--	---	---------------------------------	----------------------------------	-------



ELEV 4231					D TDZE 4231	
IRRON					RULFO	
YAWVA					FFU	
LGOON					YYIPP	
6000					1.4 NM to RW16L	
7500					RW16L	
9000					167° (23.8)	
10000					164°	



VGSI and RNAV glidepath not coincident (VGSI Angle 3.00/TCH 70).

IRRON	YAWVA	LGOON	YYIPP	RULFO	FFU
10000	9000	7500	6000	4231	4231
GP 3.04°		TCH 55			
4.4 NM		6.1 NM		4.5 NM	
				3.9 NM	
				1.4 NM	

CATEGORY	A	B	C	D	E
LPV DA	4431/18 200 (200-½)				
LNAV/VNAV DA	4537/24 306 (400-½)	4559/26 328 (400-½)	4574/30 343 (400-¾)	4593/35 362 (400-¾)	4634/40 403 (500-¾)
LNAV MDA	4760/24 529 (600-½)		4760/55 529 (600-1)		

SW-4, 13 JUN 2024 to 11 JUL 2024

SW-4, 13 JUN 2024 to 11 JUL 2024