

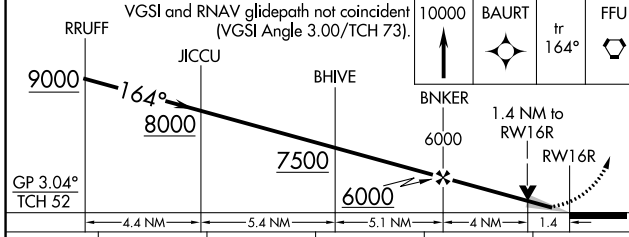
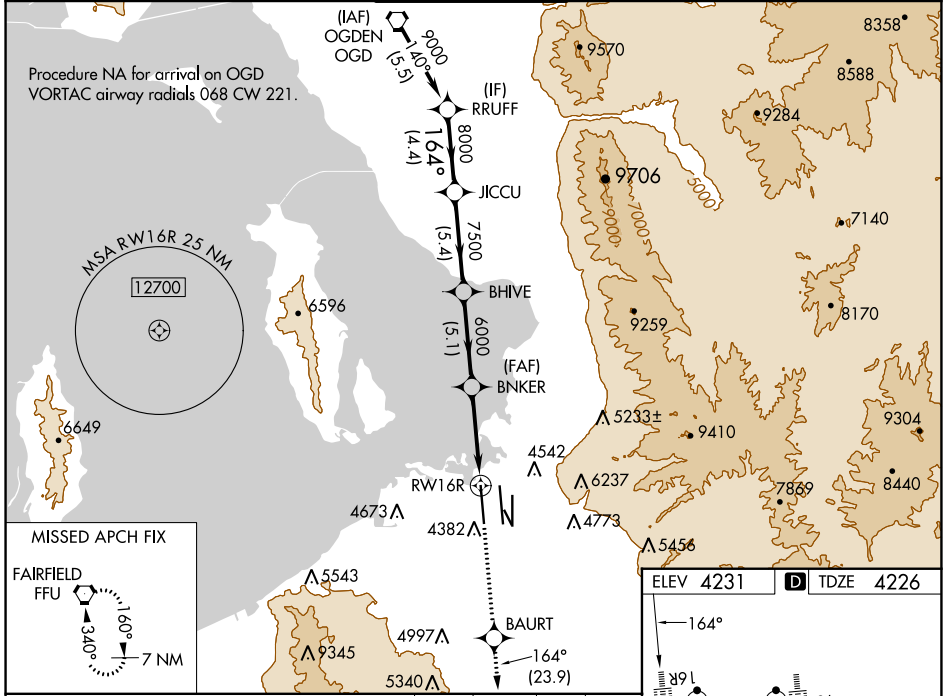
WAAS CH 42746 W16A	APP CRS 164°	Rwy Idg 12000 TDZE 4226 Apt Elev 4231
--	------------------------	--

RNAV (GPS) RWY 16R

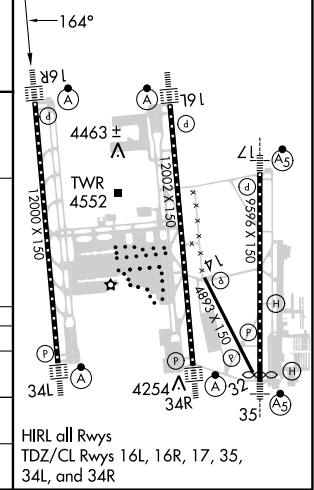
SALT LAKE CITY INTL (SLC)

<p>RNP APCH - GPS.</p> <p>Simultaneous approach authorized. LNAV procedure NA during simultaneous operations. Use of FD or AP required during simultaneous operations. For uncompensated Baro-VNAV systems, LNAV/VNAV NA below -10°C or above 46°C. For inop ALS, increase LPV Cat E visibility to RVR 4000, increase LNAV/VNAV Cat E visibility to RVR 6000, and increase LNAV Cat C/D/E visibility to 1½ SM.</p>	<p>ALSF-2</p>	<p>MISSED APPROACH: Climb to 10000 direct BAURT and on track 164° to FFU VORTAC and hold.</p>
	<p>Procedure NA for arrival on OGD VORTAC airway radials 068 CW 221.</p>	

D-ATIS 124.75 125.625	SALT LAKE CITY APP CON 125.7 284.6	SALT LAKE CITY TOWER 132.65 336.4	GND CON 123.775 348.6	CLNC DEL 127.3 379.975	CPDLC
---------------------------------	--	---	---------------------------------	----------------------------------	-------



ELEV 4231	D	TDZE 4226
-----------	---	-----------



RRUFF	JICCU	BHIVE	BNKER	BAURT	FFU
9000	8000	7500	6000	4231	4226
GP 3.04°	TCH 52				
4.4 NM	5.4 NM	5.1 NM	4 NM	1.4 NM	
CATEGORY	A	B	C	D	E
LPV DA	4426/18		200 (200-½)		
LNAV/VNAV DA	4620/35		394 (400-¾)		
LNAV MDA	4740/24		514 (600-½)		4740/55
			514 (600-1)		

SW-4, 13 JUN 2024 to 11 JUL 2024

SW-4, 13 JUN 2024 to 11 JUL 2024