

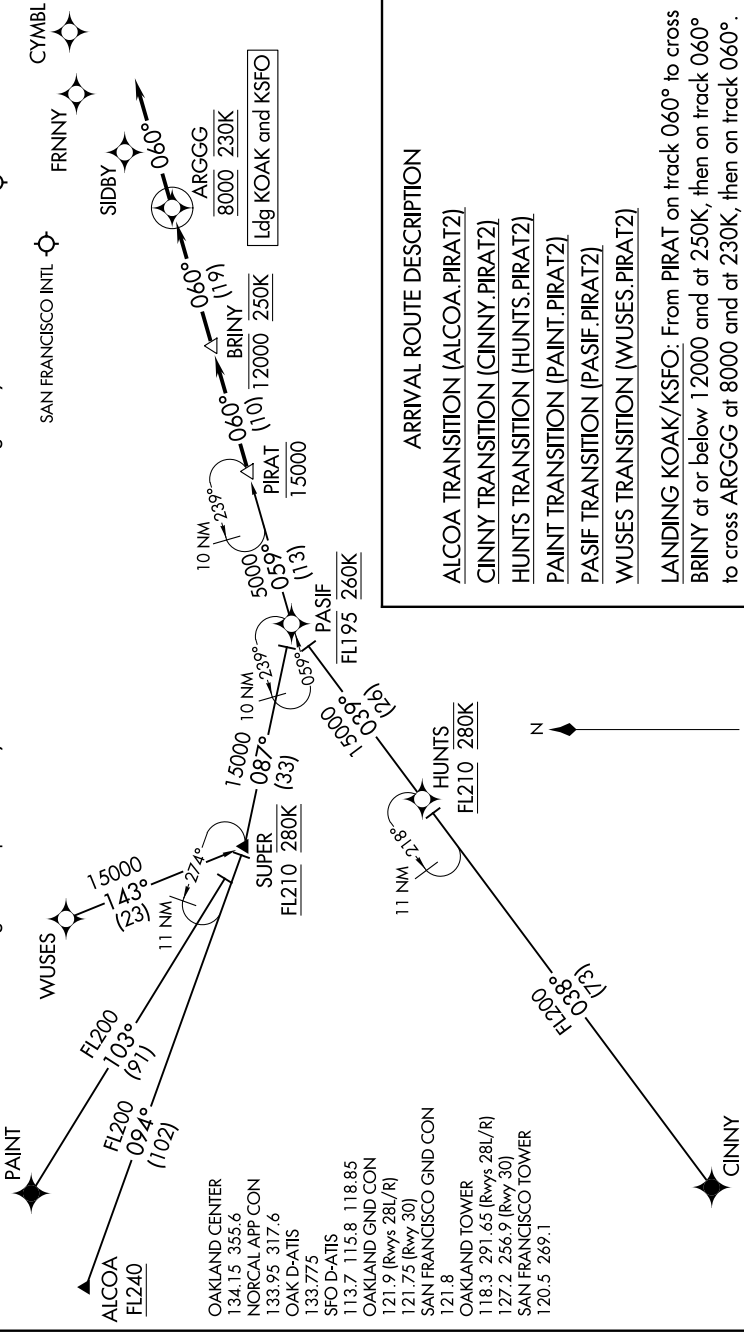
PIRAT TWO ARRIVAL (RNAV)

AL-375 (FAA)

SAN FRANCISCO, CALIFORNIA

SW-2, 13 JUN 2024 to 11 JUL 2024

- NOTE: RADAR required.
- NOTE: RNAV 1.
- NOTE: GPS required.
- NOTE: Turboplet and turboprop aircraft only.
- NOTE: Landing SFO expect Runway 28L/R unless otherwise assigned by ATC.
- NOTE: Landing OAK expect Runway 28L/R or 30 unless otherwise assigned by ATC.



ARRIVAL ROUTE DESCRIPTION

ALCOA TRANSITION (ALCOA.PIRAT2)
CINNY TRANSITION (CINNY.PIRAT2)
HUNTS TRANSITION (HUNTS.PIRAT2)
PAINT TRANSITION (PAINT.PIRAT2)
PASIF TRANSITION (PASIF.PIRAT2)
WUSES TRANSITION (WUSES.PIRAT2)

LANDING KOAK/KSFO: From PIRAT on track 060° to cross BRINY at or below 12000 and at 250K, then on track 060° to cross ARGGG at 8000 and at 230K, then on track 060°. Expect RADAR vectors to assigned instrument approach.

NOTE: Chart not to scale.

SW-2, 13 JUN 2024 to 11 JUL 2024

PIRAT TWO ARRIVAL (RNAV)

SAN FRANCISCO, CALIFORNIA

- OAKLAND CENTER
134.15 355.6
- NORCAL APP CON
133.95 317.6
- OAK D-ATIS
133.775
- SFO D-ATIS
113.7 115.8 118.85
- OAKLAND GND CON
121.9 (Rwys 28L/R)
- 121.75 (Rwy 30)
- SAN FRANCISCO GND CON
121.8
- OAKLAND TOWER
118.3 291.65 (Rwys 28L/R)
- 127.2 256.9 (Rwy 30)
- SAN FRANCISCO TOWER
120.5 269.1