


WAAS CH 78306 W07A	APP CRS 074°	Rwy Idg TDZE Apt Elev	6052 13 14
--	------------------------	-----------------------------	---------------------------------------

RNAV (GPS) RWY 7

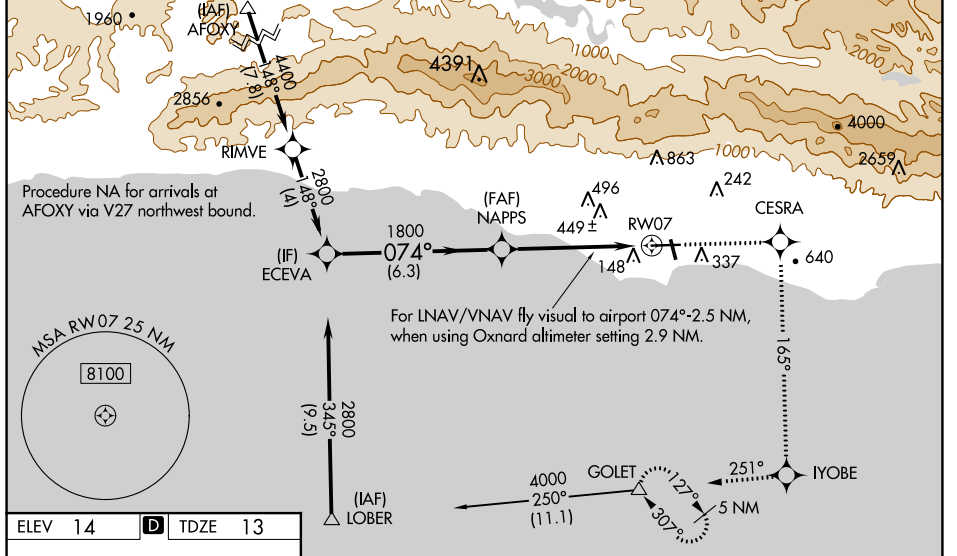
SANTA BARBARA MUNI (SBA)

RNP APCH-GPS.

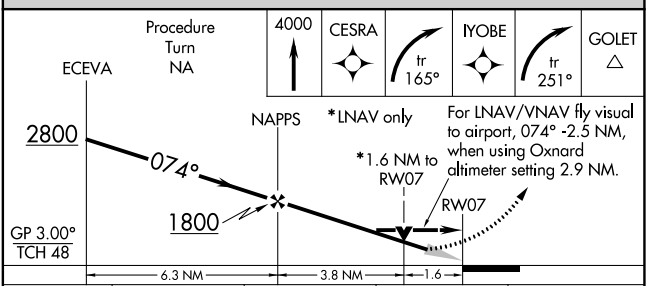
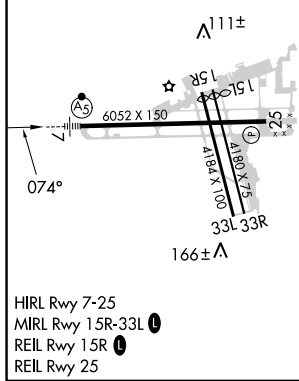
⚠ Inop table does not apply to LNAV/VNAV. For inop MALSR when using Oxnard altimeter setting, increase LPV all Cats visibility to 1½, and LNAV Cat C to 1¾, Cat D to 2. For inop MALSR, increase LPV all Cats visibility to RVR 6000. For uncompensated Baro-VNAV systems, LNAV/VNAV NA below -15°C or above 49°C. Baro-VNAV NA when using Oxnard altimeter setting. When local altimeter setting not received, use Oxnard altimeter setting and increase all DAs/MDAs 100 feet, and increase, LNAV/VNAV visibility Cat C and D ½ mile, LNAV Cat C to RVR 6000, Cat D ¼ mile, Circling Cat A visibility ½ mile, Cat C visibility ½ mile. VDP NA when using Oxnard altimeter setting. Circling Rwy 15R NA at night. Circling NA for Cats C and D north of Rwy 7-25.

MALSR
 MISSED APPROACH: Climb to 4000 direct CESRA and right turn via 165° track to IYOBE and right turn via 251° track to GOLET and hold, continue climb-in-hold to 4000.

ATIS 132.65	SANTA BARBARA APP CON* 120.55 319.15 (151°-329°) 125.4 291.1 (330°-150°)	SANTA BARBARA TOWER* 119.7 (CTAF) 0 254.35	GND CON 121.7	CLNC DEL 132.9	UNICOM 122.95
-----------------------	--	---	-------------------------	--------------------------	-------------------------



ELEV 14	D	TDZE 13
---------	----------	---------



CATEGORY	A	B	C	D
LPV DA	380/40 367 (400-¾)			
LNAV/VNAV DA	866-2	853 (900-2)	866-2½ 853 (900-2½)	866-2¾ 853 (900-2¾)
LNAV MDA	560/24	547 (600-½)	560/50 547 (600-1)	560/60 547 (600-1¼)
CIRCLING	800-1	800-1¼	800-2¼	1000-3
	786 (800-1)	786 (800-1¼)	786 (800-2¼)	986 (1000-3)

SW-3, 13 JUN 2024 to 11 JUL 2024

SW-3, 13 JUN 2024 to 11 JUL 2024