

VORTAC GVO	APP CRS	Rwy Idg 6052
113.8	279°	TDZE 10
Chan 85		Apt Elev 10

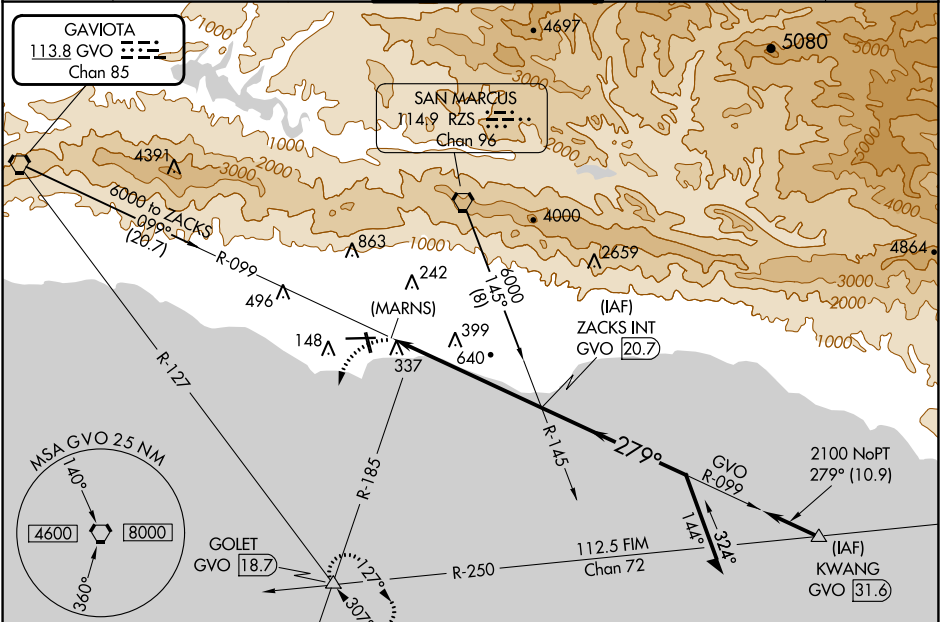
VOR or GPS RWY 25

SANTA BARBARA MUNI (SBA)

⚠ Helicopter visibility reduction below 3/4 SM NA. When local altimeter not received, use Oxnard altimeter setting and increase all MDA 100 feet and all Cats B and C visibility 1/4 mile. Circling Rwy 15R NA at night. Circling NA for Cats C and D north of Rwy 7-25.

MISSED APPROACH: Climbing left turn to 4000 via heading 205° and GVO R-127 to GOLET Int and hold.

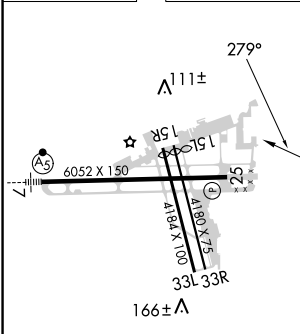
ATIS 132.65	SANTA BARBARA APP CON * 120.55 319.15 (151°-329°) 125.4 291.1 (330°-150°)	SANTA BARBARA TOWER * 119.7 (CTAF) 254.35	GND CON 121.7	CLNC DEL 132.9	UNICOM 122.95
-----------------------	-----------------------------------------------------------------------------------------------	------------------------------------------------------------	-------------------------	--------------------------	-------------------------



SW-3, 13 JUN 2024 to 11 JUL 2024

SW-3, 13 JUN 2024 to 11 JUL 2024

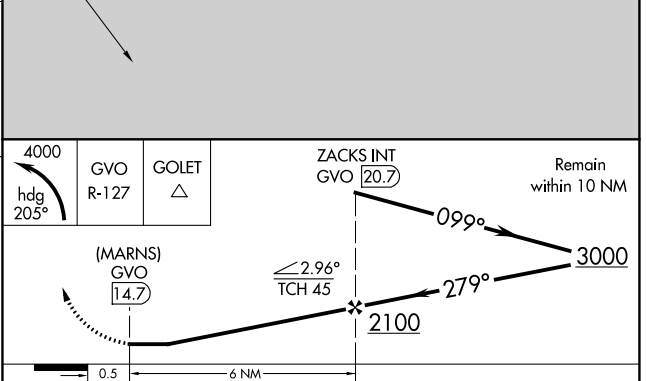
ELEV 10	D	TDZE 10
----------------	----------	----------------



HIRL Rwy 7-25
MIRL Rwy 15R-33L
REIL Rwy 15R
REIL Rwy 25

FAF to MAP 6 NM

Knots	60	90	120	150	180
Min:Sec	6:00	4:00	3:00	2:24	2:00



CATEGORY	A	B	C	D
S-25	920-1 1/4 910 (1000-1 1/4)		920-2 3/4 910 (1000-2 3/4)	920-3 910 (1000-3)
CIRCLING	920-1 1/4 910 (1000-1 1/4)		920-2 3/4 910 (1000-2 3/4)	960-3 950 (1000-3)