

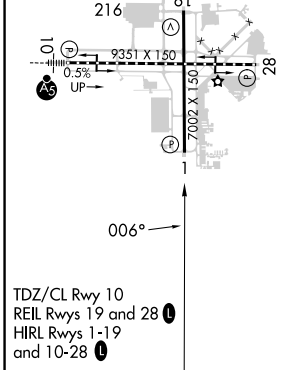
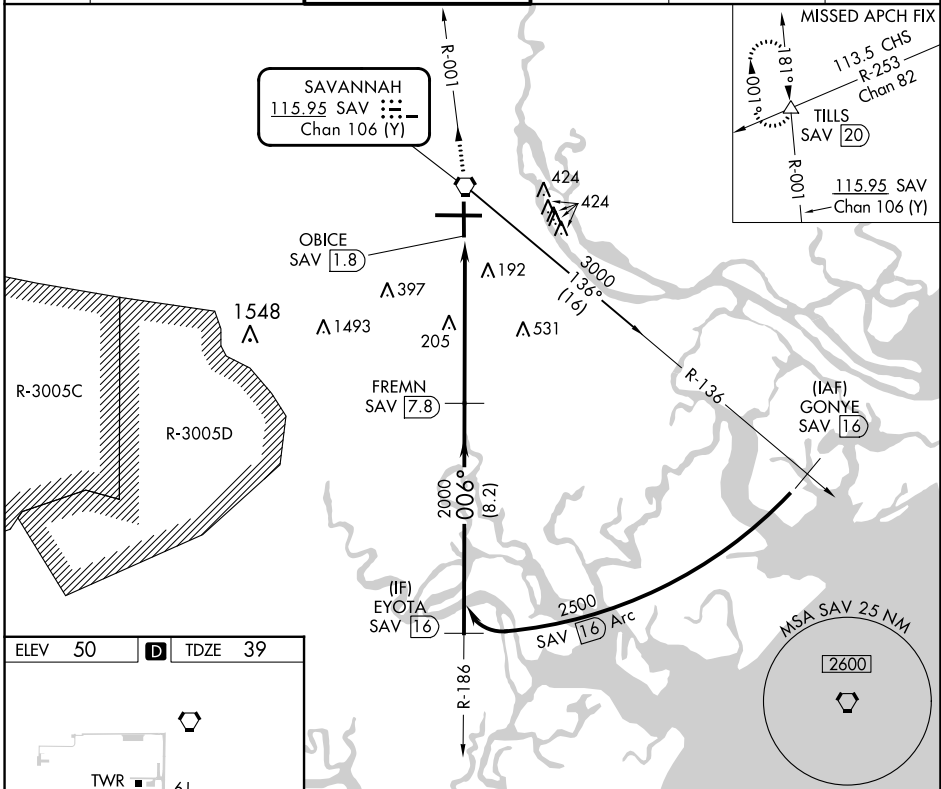
VORTAC SAV 115.95 Chan 106 (Y)	APP CRS 006°	Rwy Idg TDZE Apt Elev	7002 39 50
--	------------------------	-----------------------------	---------------------------------------

VOR/DME or TACAN RWY 1

SAVANNAH/HILTON HEAD INTL (SAV)

ATIS 123.75	SAVANNAH APP CON * 120.4 353.775	SAVANNAH TOWER * 125.975 (CTAF) 0 257.8	GND CON 121.9 348.6	CLNC DEL 119.55 291.775	UNICOM 122.95
-----------------------	--	--	-------------------------------	-----------------------------------	-------------------------

MISSED APPROACH: Climb to 4000 direct SAV
VORTAC and via SAV R-001 to TILLS INT/SAV
20 DME and hold.



SAVANNAH, GEORGIA
Orig-E 10SEP20

4000	SAV	SAV	TILLS		
↑	◻	◻	△		
	SAV R-001				
	SAV VORTAC	SAV 3.1	FREMN SAV 7.8	2500	
	OBICE SAV 1.8			Procedure Turn NA	
		2.98°	TCH 74		
	1.3 NM	4.7 NM	8.2 NM		
CATEGORY	A	B	C	D	E
S-1	520/55	481 (500-1)	520-1 3/8 481 (500-1 1/2)	520-1 1/2 481 (500-1 1/2)	520-1 1/4 481 (500-1 1/4)
CIRCLING	520-1	470 (500-1)	740-2 690 (700-2)	740-2 1/4 690 (700-2 1/4)	900-3 850 (900-3)

SAVANNAH/HILTON HEAD INTL (SAV)
VOR/DME or TACAN RWY 1

SE-4, 13 JUN 2024 to 11 JUL 2024

SE-4, 13 JUN 2024 to 11 JUL 2024