

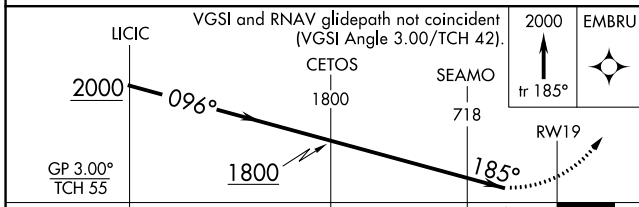
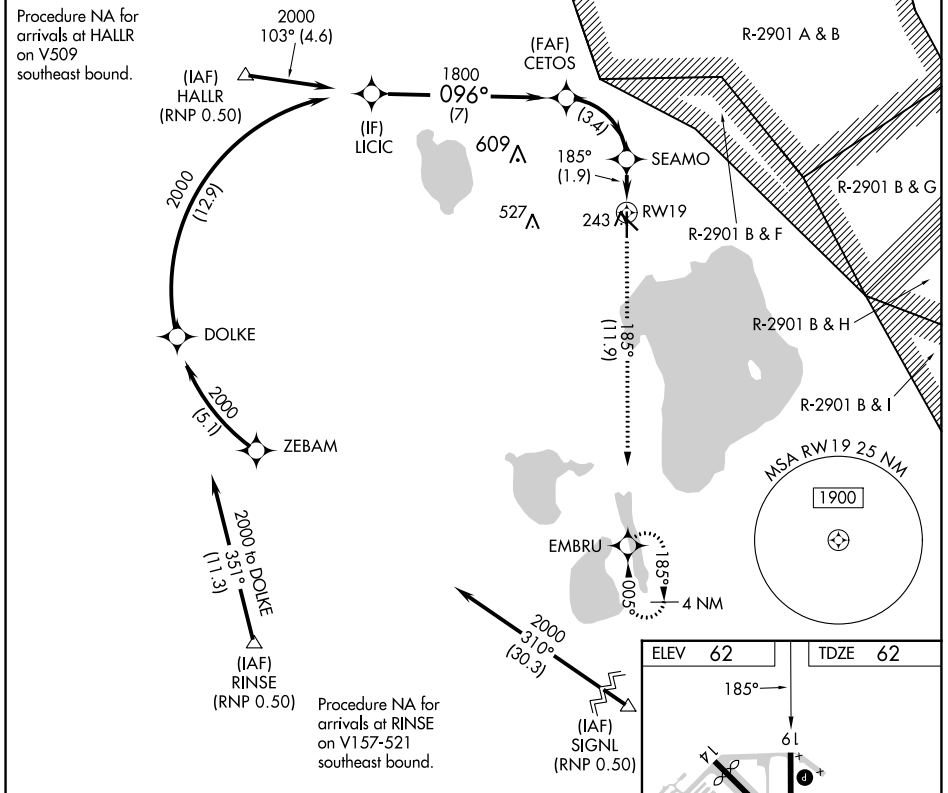
APP CRS	Rwy ldg	<b>5234</b>
<b>185°</b>	TDZE	<b>62</b>
	Apt Elev	<b>62</b>

# RNAV (RNP) RWY 19

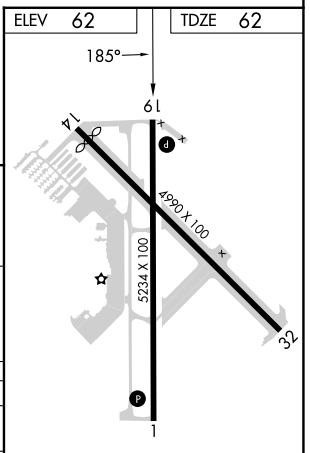
SEBRING RGNL (SEF)

RNP AR APCH GPS.	MISSED APPROACH: Climb to 2000 on track 185° to EMBRU and hold.
<p>▼ For uncompensated Baro-VNAV systems, procedure NA below -15°C or above 54°C.</p> <p>▲ NA</p>	

AWOS-3 <b>119.475</b>	MIAMI CENTER <b>134.55 257.7</b>	UNICOM <b>122.7 (CTAF) 0</b>
--------------------------	-------------------------------------	---------------------------------



CATEGORY	A	B	C	D
RNP 0.30 DA	440-1¼		378 (400-1¼)	



**AUTHORIZATION REQUIRED**

MIRL Rwy 1-19 0  
REIL Rwy 1 and 19 0

SE-3, 13 JUN 2024 to 11 JUL 2024

SE-3, 13 JUN 2024 to 11 JUL 2024