

HI-TACAN Z RWY 33

TACAN BAD Chan 105	APCH CRS 323°	Rwy ldg 11,758 THRE 161 Arprt Elev 165
-----------------------	------------------	--

[USAF]

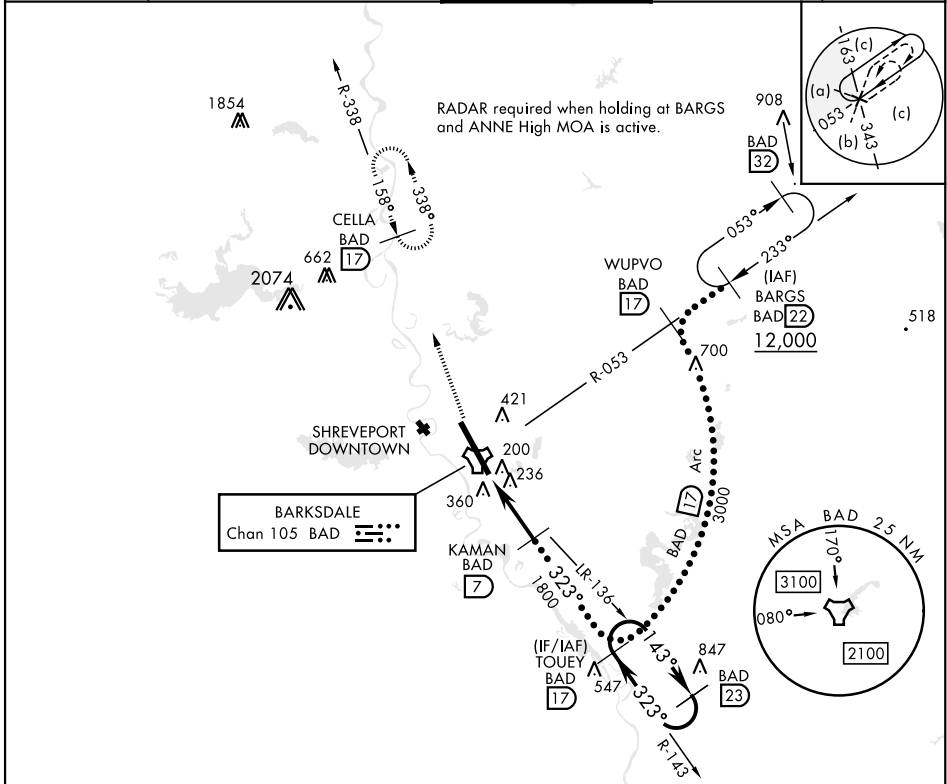
BARKSDALE AFB (KBAD)

* When ALS inop, increase CAT CDE vis to 1½ miles.
** Circling not authorized W of Rwy.

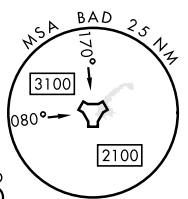
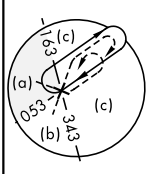


MISSED APPROACH: Climb to 4000 via BAD R-338 direct CELLA and hold.

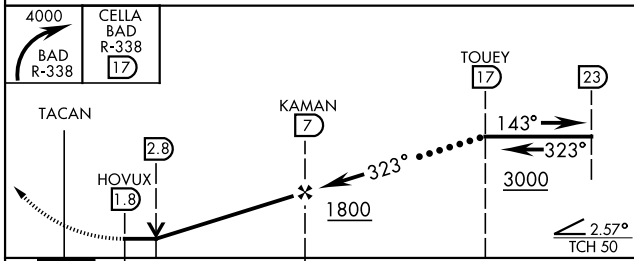
ATIS 307.025	SHREVEPORT APP CON 320°-152° 123.75 360.725 153°-319° 119.9 335.55	TOWER* 128.25 278.3	GND CON 121.8 253.5	ASR
-----------------	--	------------------------	------------------------	-----



RADAR required when holding at BARGS and ANNE High MOA is active.

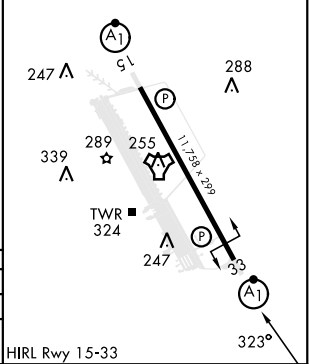


EMERG SAFE ALT 100 NM 3300



ELEV 165	THRE 161
----------	----------

CATEGORY	C	D	E
S-33*	640/50	479	(500-1)
CIRCLING**	NOT AUTHORIZED	760-2 595 (600-2)	780-2¼ 615 (700-2¼)



HI-TACAN Z RWY 33

SC-4, 13 JUN 2024 to 11 JUL 2024

SC-4, 13 JUN 2024 to 11 JUL 2024