

BOSSIER CITY, LOUISIANA

HI-VOR/DME Z RWY 33

VORTAC EMG 111.2 Chan 49	APCH CRS 323°	Rwy Idg 11,758 THRE 161 Arpt Elev 165
--	-------------------------	--

[USAF]

BARKSDALE AFB (KBAD)

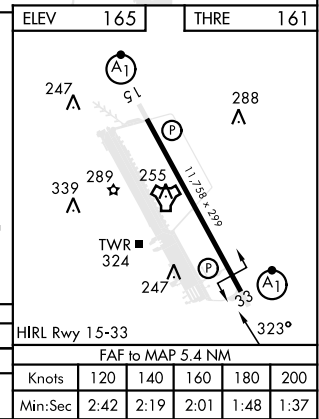
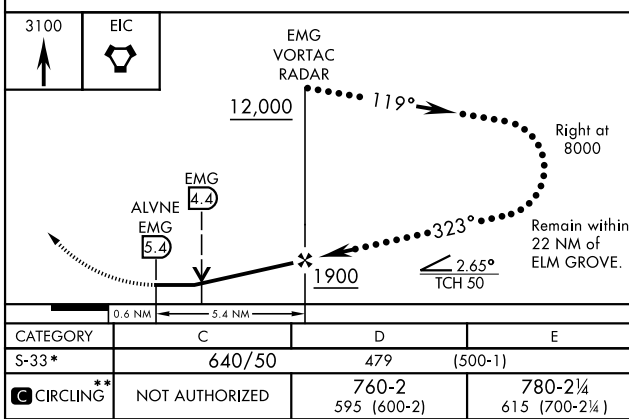
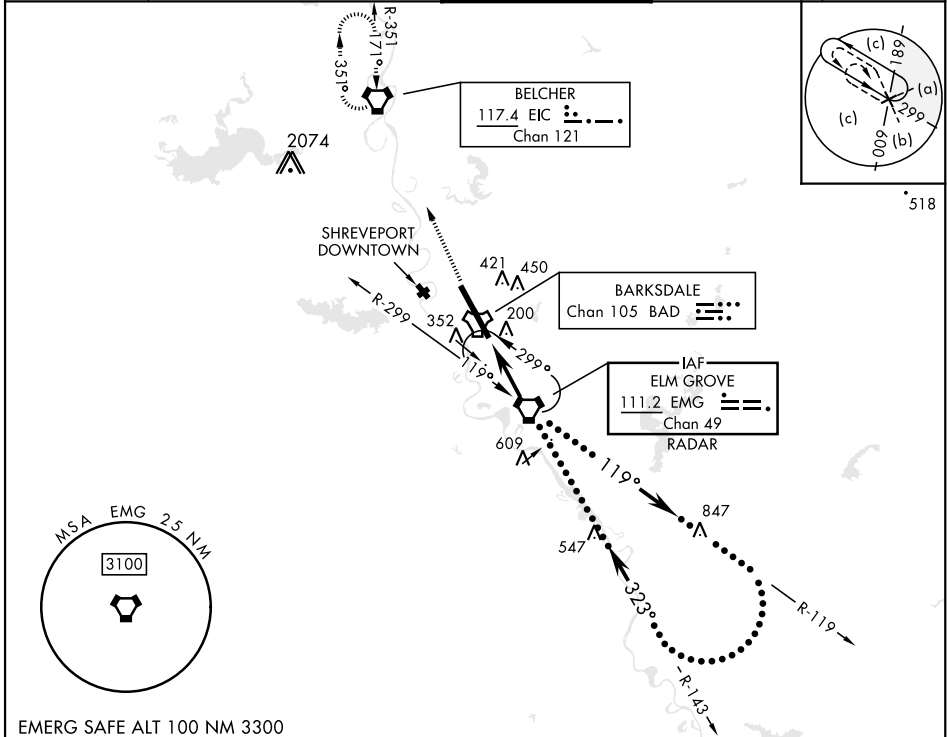
DME or RADAR required.

- * When ALS inop, increase CAT CDE vis to 1 $\frac{3}{8}$ miles.
- ** Circling not authorized W of Rwy.



MISSED APPROACH: Climb to 3100 direct to EIC VORTAC and hold.

ATIS 307.025	SHREVEPORT APP CON 320°-152° 123.75 360.725 153°-319° 119.9 335.55	TOWER★ 128.25 278.3	GND CON 121.8 253.5	ASR
------------------------	--	-------------------------------	-------------------------------	-----



BOSSIER CITY, LOUISIANA

32°30'N-93°40'W

BARKSDALE AFB (KBAD)

Amdt 5 25JUN15

HI-VOR/DME Z RWY 33

SC-4, 13 JUN 2024 to 11 JUL 2024

SC-4, 13 JUN 2024 to 11 JUL 2024