

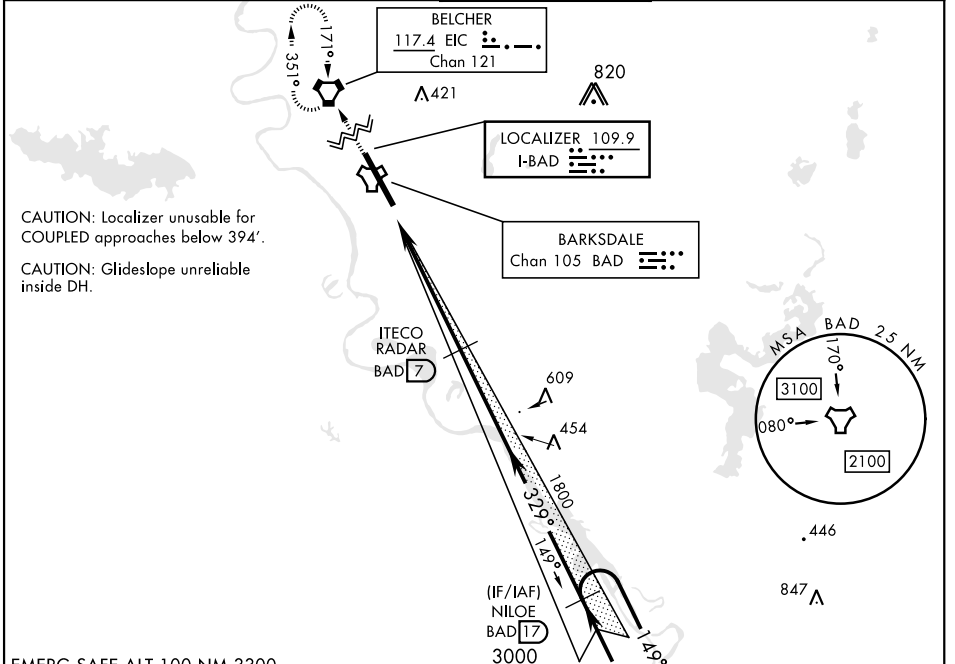
BOSSIER CITY, LOUISIANA

ILS or LOC W RWY 33

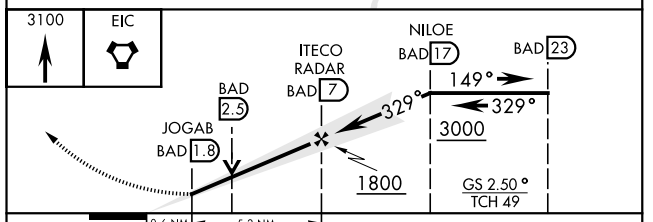
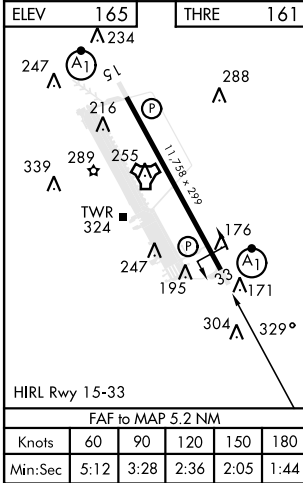
LOC I-BAD 109.9	APCH CRS 329°	Rwy Idg THRE Arprt Elev 11,758 161 165	[USAF]	BARKSDALE AFB (KBAD)
---------------------------	-------------------------	--	--------	----------------------

RADAR or DME required		ALSF-1 	MISSED APPROACH: Climb to 3100 direct EIC VORTAC and hold.
* When ALS inop, increase RVR to 40 and vis to 3/4 mile. ** When ALS inop, increase CAT AB RVR to 55 and vis to 1 mile, CAT, CDE RVR to 60 and vis to 1 1/2 miles. *** Circling not authorized W of Rwy.			

ATIS 307.025	SHREVEPORT APP CON 320°-152° 123.75 360.725 153°-319° 119.9 335.55	TOWER * 128.25 278.3	GND CON 121.8 253.5	ASR
------------------------	--	--------------------------------	-------------------------------	-----



EMERG SAFE ALT 100 NM 3300



CATEGORY	A	B	C	D	E
S-ILS 33 *	361/24		200	(200-1/2)	
S-LOC 33 **	560/24	399 (400-1/2)	560/35	399	(400-5/8)
CIRCILING ***	NOT AUTHORIZED			760-2 595 (600-2)	780-2 1/4 615 (700-2 1/4)

BOSSIER CITY, LOUISIANA 32° 30' N-93° 40' W BARKSDALE AFB (KBAD)

Amtd 5 25JUN15

ILS or LOC W RWY 33

SC-4, 13 JUN 2024 to 11 JUL 2024

SC-4, 13 JUN 2024 to 11 JUL 2024