

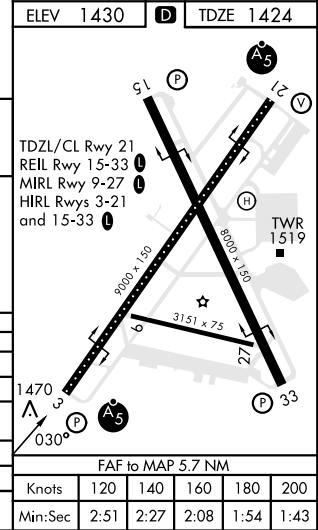
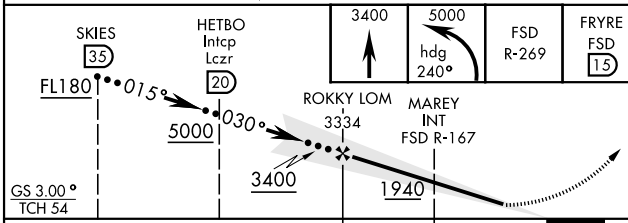
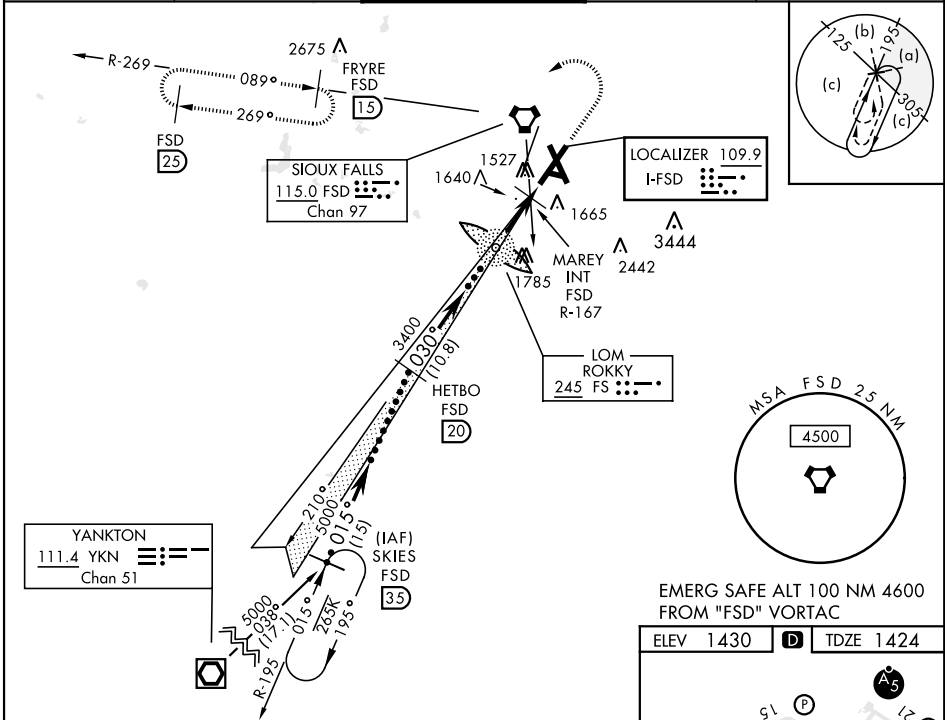
SIoux FALLS, SOUTH DAKOTA

HI-ILS or LOC RWY 3

LOC I-FSD 109.9	APCH CRS 030°	Rwy ldg 8999 TDZE 1424 Arpt Elev 1430	AL-396 [USAF]	JOE FOSS FLD (KFSD)
---------------------------	-------------------------	--	---------------	---------------------

DME required. * When ALS inop, increase CAT CDE RVR to 40, vis to ¼ mile. ** When ALS inop, increase CAT CDE vis to 1 ½ mile. *** When ALS inop, increase CAT CDE RVR to 55, vis to 1 mile.	MALSR A5	MISSED APPROACH: Climb to 3400, then climbing left turn to 5000 on heading 240° and FSD VORTAC R-269 to FRYRE (FSD 15 DME) and hold.
--	-------------	--

ATIS 126.6	SIoux FALLS APP CON 125.8 306.2	SIoux FALLS TOWER ★ 118.3(CTAF) 257.8	GND CON 121.9 348.6	ASR
----------------------	---	---	-------------------------------	-----



CATEGORY	C	D	E
S-ILS 3*	1674/24	250	(300-1/2)
S-LOC 3**	1940/55 516 (600-1)	1940/60 516 (600-1 1/2)	
CIRCLING	2060-1 3/4 630 (700-1 3/4)	2200-2 1/2 770 (800-2 1/2)	2300-3 870 (900-3)
MAREY FIX MINIMA			
S-LOC 3***	1780/30 356 (400-3/4)	1780/40 356 (400-3/4)	
CIRCLING	2060-1 3/4 630 (700-1 3/4)	2200-2 1/2 770 (800-2 1/2)	2300-3 870 (900-3)

FAF to MAP 5.7 NM					
Knots	120	140	160	180	200
Min:Sec	2:51	2:27	2:08	1:54	1:43

SIoux FALLS, SOUTH DAKOTA 43°35'N-96°45'W JOE FOSS FLD (KFSD)
Amdt 9B 04NOV21

HI-ILS or LOC RWY 3

NC-1, 13 JUN 2024 to 11 JUL 2024

NC-1, 13 JUN 2024 to 11 JUL 2024