


LOC I-JOU 111.1	APP CRS 210°	Rwy Idg 8999 TDZE 1430 Apt Elev 1430
---------------------------	------------------------	---

ILS or LOC RWY 21

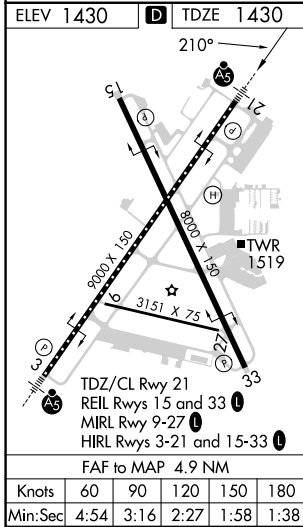
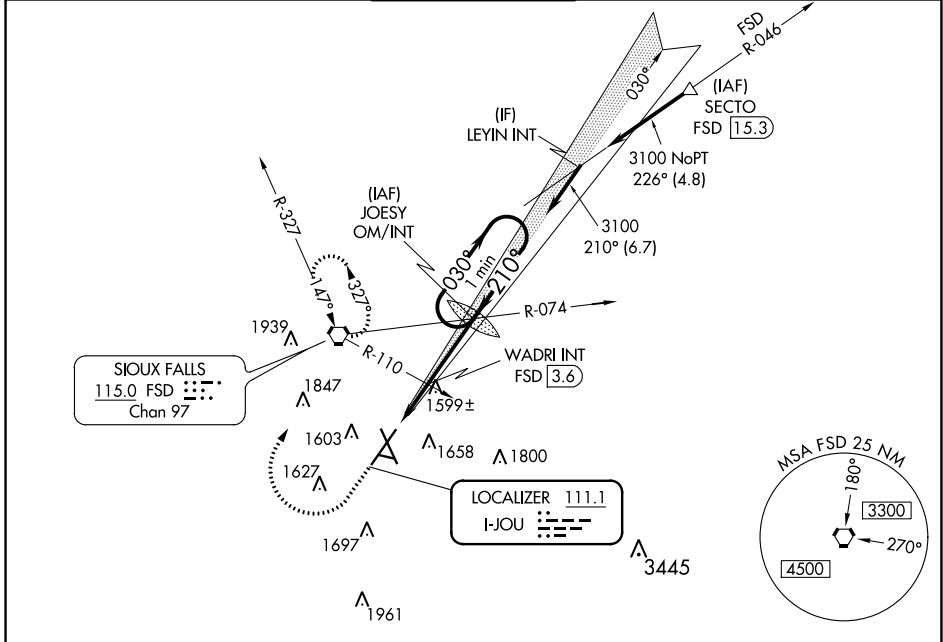
JOE FOSS FLD (FSD)

ASR -31°C For inoperative MALSR increase S-ILS all Cats visibility to ¾ mile, increase S-LOC 21 Cat C/D visibility to 1½ mile. When using WADRI FIX minimums, increase S-LOC 21 Cat C/D visibility to 1 mile.

MALSR 

MISSED APPROACH: Climb to 3400 then right turn direct FSD VORTAC and hold.

ATIS 126.6	SIoux FALLS APP CON * 125.8 306.2	SIoux FALLS TOWER * 118.3 (CTAF) 0 257.8	GND CON 121.9 348.6	UNICOM 122.95
----------------------	---	--	-------------------------------	-------------------------



NC-1, 13 JUN 2024 to 11 JUL 2024

NC-1, 13 JUN 2024 to 11 JUL 2024