

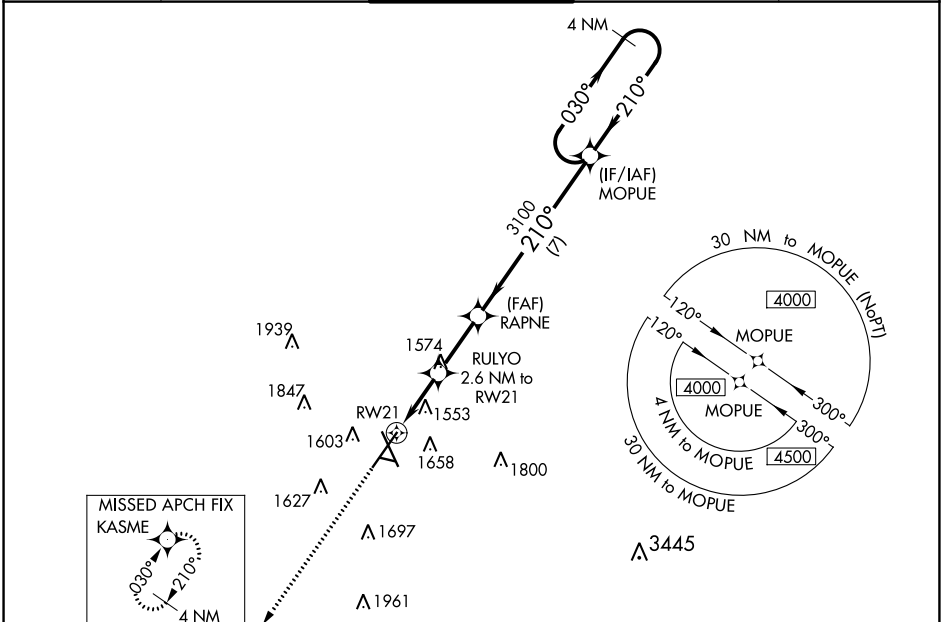
WAAS CH 99323 W21A	APP CRS 210°	Rwy Idg TDZE Apt Elev	8999 1430 1430
--	------------------------	-----------------------------	---

RNAV (GPS) RWY 21

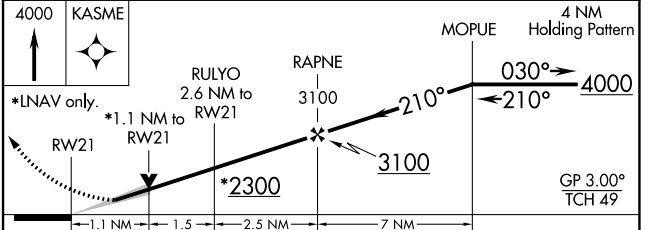
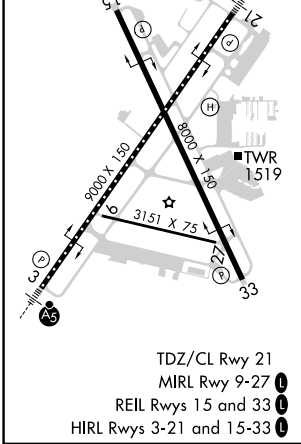
JOE FOSS FLD (FSD)

 	For uncompensated Baro-VNAV systems, LNAV/VNAV NA below -22°C (-7°F) or above 54°C (130°F). DME/DME RNP-0.3 NA. For Inop ALS, increase LPV all Cats visibility to RVR 4000 and LNAV/VNAV all Cats visibility to RVR 4500.			MISSED APPROACH: Climb to 4000 direct KASME and hold.

ATIS 126.6	SIoux FALLS APP CON* 125.8 306.2	SIoux FALLS TOWER* 118.3 (CTAF) 257.8	GND CON 121.9 348.6	UNICOM 122.95
----------------------	--	---	-------------------------------	-------------------------



ELEV 1430	D	TDZE 1430
-----------	----------	-----------



CATEGORY	A	B	C	D
LPV DA		1630/18	200 (300-½)	
LNAV/VNAV DA		1704/24	274 (300-½)	
LNAV MDA	1820/24	390 (400-½)	1820/35	390 (400-¾)
CIRCLING	1960-1 530 (600-1)	1980-1 550 (600-1)	2060-1¾ 630 (700-1¾)	2200-2 ½ 770 (800-2 ½)

NC-1, 13 JUN 2024 to 11 JUL 2024

NC-1, 13 JUN 2024 to 11 JUL 2024