

APP CRS 098°	Rwy Idg TDZE Apt Elev	3151 1424 1430
------------------------	-----------------------------	---

RNAV (GPS) RWY 9

JOE FOSS FLD (FSD)

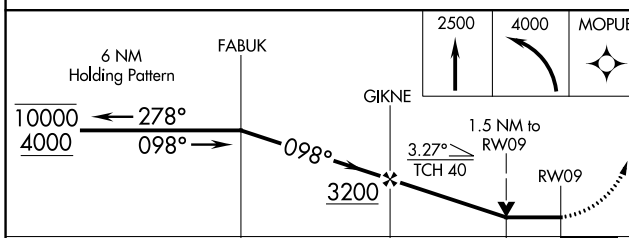
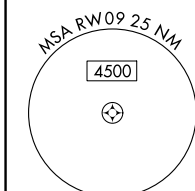
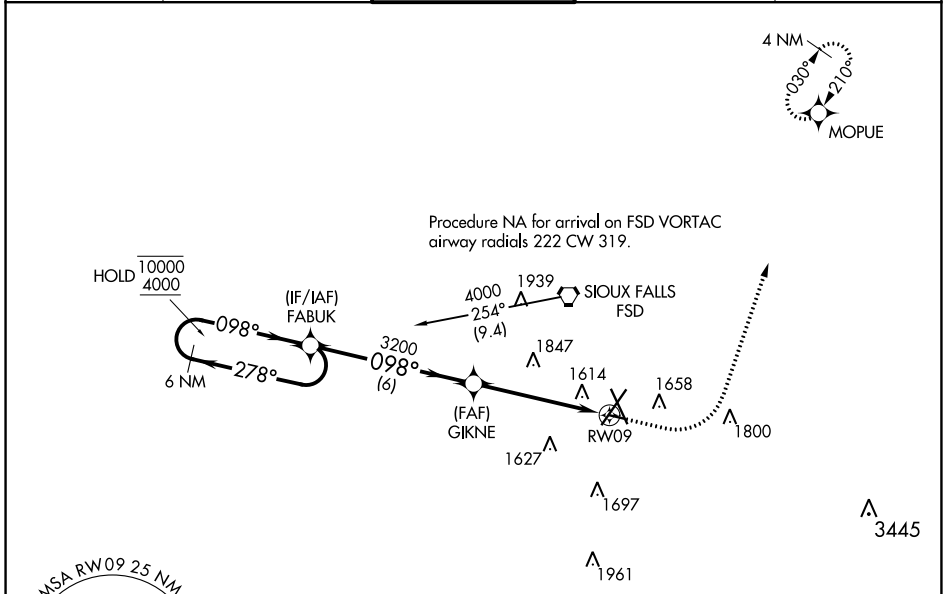
RNP APCH - GPS.

ASR Rwy 9 helicopter visibility reduction below 3/4 SM NA.

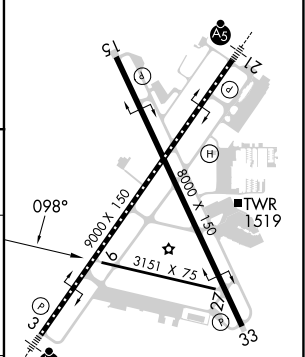
ASR -31°C

MISSED APPROACH: Climb to 2500 then climbing left turn to 4000 direct MOPUE and hold.

ATIS 126.6	SIoux FALLS APP CON* 125.8 306.2	SIoux FALLS TOWER* 118.3 (CTAF) 257.8	GND CON 121.9 348.6	UNICOM 122.95
----------------------	--	---	-------------------------------	-------------------------



ELEV 1430	D	TDZE 1424
-----------	---	-----------



CATEGORY	A	B	C	D
LNAV MDA	2000-1	576 (600-1)		NA
CIRCLING	2000-1	570 (600-1)		NA

TDZ/CL Rwy 21
MRL Rwy 9-27
REIL Rws 15 and 33
HIRL Rws 3-21 and 15-33

NC-1, 13 JUN 2024 to 11 JUL 2024

NC-1, 13 JUN 2024 to 11 JUL 2024