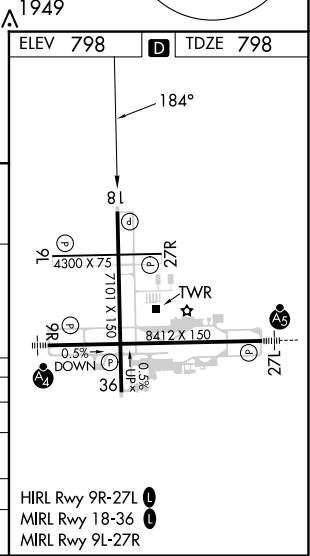
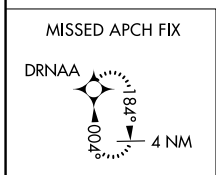
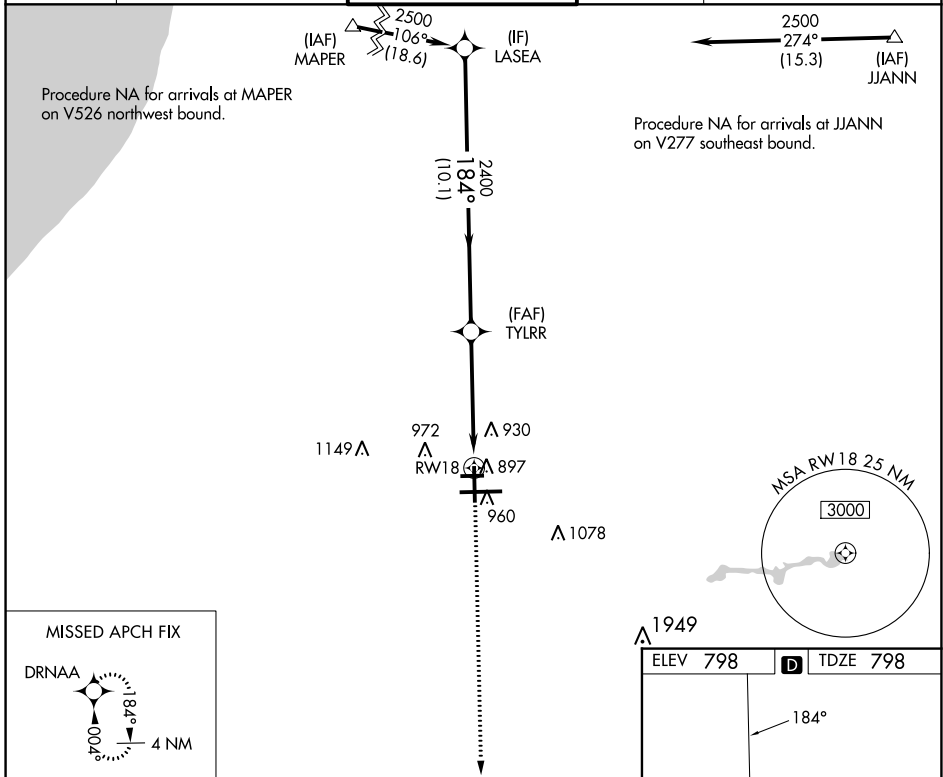


WAAS CH 73021 W18A	APP CRS 184°	Rwy Idg 7101 TDZE 798 Apt Elev 798
--	------------------------	---

RNAV (GPS) RWY 18

SOUTH BEND INTL (SBN)

RNP APCH - GPS.		MISSED APPROACH: Climb to 2400 direct DRNAA and hold.		
<p>⚠ Circling to Rwy 27R NA at night. For uncompensated Baro-VNAV systems, LNAV/VNAV NA below -19°C or above 54°C.</p>				
ATIS 120.675	SOUTH BEND APP CON * 118.55 257.8	SOUTH BEND TOWER * 135.675 (CTAF) 0 257.8	GND CON 121.7	CLNC DEL 121.9



LASEA	2500	184°	TYLRR	2400	DRNAA	2400
GP 3.00°						
TCH 50						
	10.1 NM		4.9 NM			
CATEGORY	A	B	C	D		
LPV DA		1048-3/4	250 (300-3/4)			
LNAV/VNAV DA		1057-3/4	259 (300-3/4)			
LNAV MDA		1160-1	362 (400-1)			
C CIRCLING	1280-1	482 (500-1)	1440-1 3/4 642 (700-1 3/4)	1500-2 1/4 702 (800-2 1/4)		

EC-2, 13 JUN 2024 to 11 JUL 2024

EC-2, 13 JUN 2024 to 11 JUL 2024