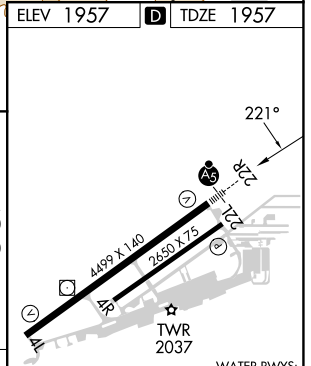
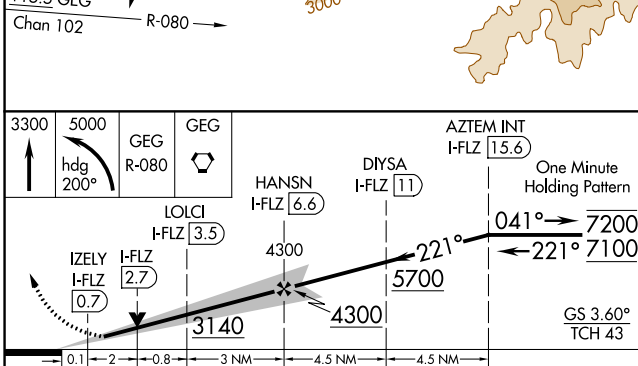
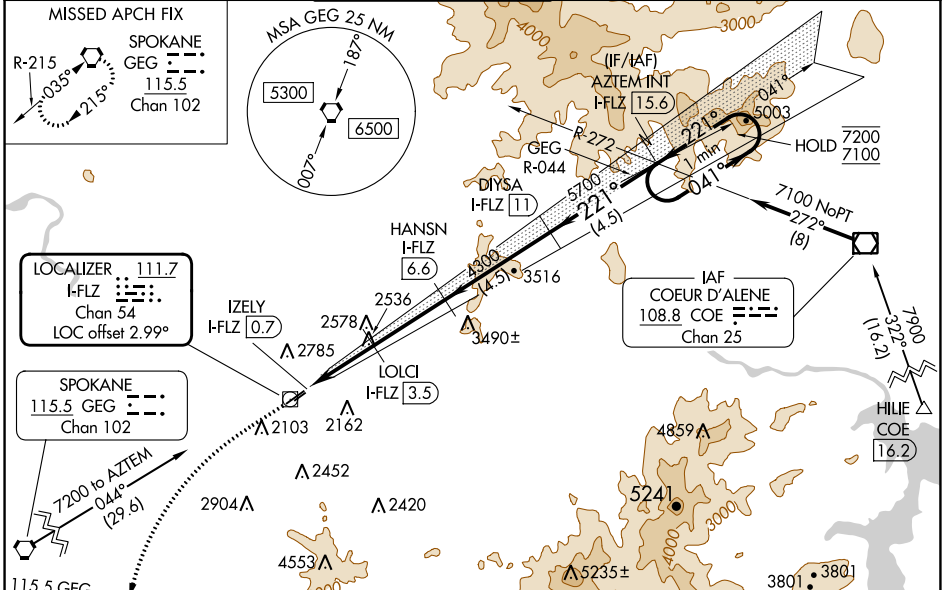


LOC/DME I-FLZ	APP CRS	Rwy Idg	<b>4499</b>
<b>111.7</b>	<b>221°</b>	TDZE	<b>1957</b>
Chan <b>54</b>		Apt Elev	<b>1957</b>

# ILS or LOC RWY 22R

FELTS FLD (S/F)

DME required.		MALSR		MISSED APPROACH: Climb to 3300 then climbing left turn to 5000 on heading 200° and GEG VORTAC R-080 to GEG VORTAC and hold.	
<p>▼ Circling NA northwest of Rwy 4L-22R. Circling Rwy 22L NA at night.</p> <p>⚠ Rwy 22R helicopter visibility reduction below 3/4 SM NA. For inop ALS, increase S-ILS Cat A/B/C visibility to 7/8 SM, increase S-LOC Cat A visibility to 1 SM and Cat C visibility to 2 1/2 SM.</p> <p>❄ -16°C</p>					
ATIS	SPOKANE APP CON	FELTS TOWER ★	GND CON	CLNC DEL	UNICOM
<b>120.55</b>	<b>133.35 263.0</b>	<b>132.5 (CTAF) 239.025</b>	<b>121.7</b>	<b>121.7</b>	<b>122.95</b>



CATEGORY	A	B	C	D
S-ILS 22R	2257-1/2 300 (300-1/2)			NA
S-LOC 22R	2800-3/4	843 (900-3/4)	2800-1/8 843 (900-1/8)	NA
CIRCLING	2800-1 1/4 843 (900-1 1/4)	2800-1 1/2 843 (900-1 1/2)	3100-3 1143 (1200-3)	NA

ELEV 1957	TDZE 1957
<p>REIL Rwy 4L</p> <p>MIRL Rwy 4L-22R</p>	
<p>WATER RWYS: 03W-21W 6000 X 100</p>	

NW-1, 13 JUN 2024 to 11 JUL 2024

NW-1, 13 JUN 2024 to 11 JUL 2024