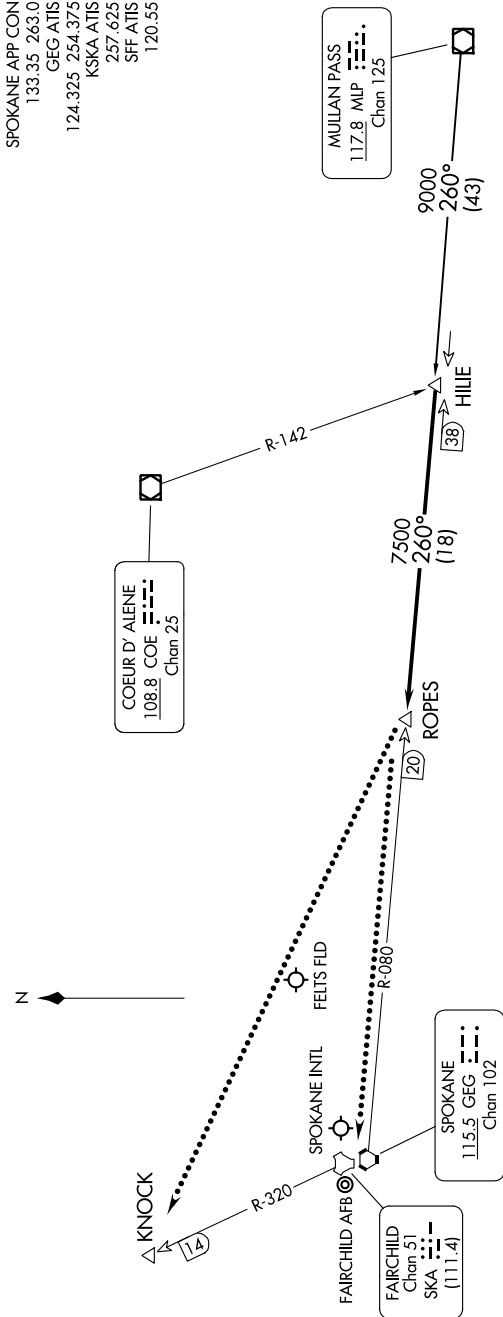


NW-1, 13 JUN 2024 to 11 JUL 2024



SPOKANE APP CON
133.35 263.0
GEG ATIS
124.325 254.375
KSKA ATIS
257.625
SFF ATIS
120.55

COEUR D'ALENE
108.8 COE
Chan 25

MULLAN PASS
117.8 MLP
Chan 125

SPOKANE
115.5 GEG
Chan 102

FAIRCHILD
Chan 51
SKA
(111.4)

NOTE: DME and RADAR required.
NOTE: Chart not to scale.

ARRIVAL ROUTE DESCRIPTION

MULLAN PASS TRANSITION (MLP.HILIE3): From over MLP VOR/DME on MLP R-260 to HILIE. Thence
. From over HILIE on SPOKANE VORTAC (GEG) R-080 to ROPES. Expect RADAR vectors to final approach course.

LOST COMMUNICATIONS

After ROPES:
LANDING SPOKANE INTL or FELT'S FLD: Proceed to GEG VORTAC on GEG R-080, maintain last assigned altitude to GEG.
LANDING FAIRCHILD AFB: Proceed to KNOCK direct, maintain last assigned altitude to KNOCK.

NW-1, 13 JUN 2024 to 11 JUL 2024