

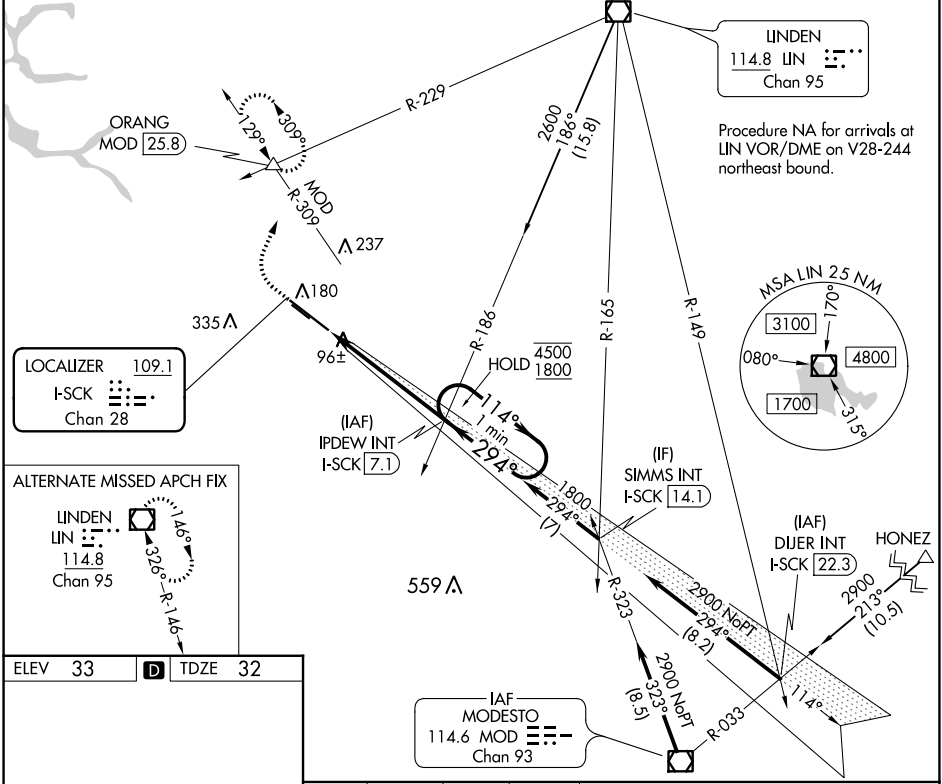
LOC/DME I-SCK 109.1 Chan 28	APP CRS 294°	Rwy Idg 8650 TDZE 32 Apt Elev 33
---	------------------------	---

ILS RWY 29R (SA CAT II)

STOCKTON METRO (SCK)

Reduced lighting: requires specific OPSPEC, MSPEC, or LOA approval and use of autoland or HUD to touchdown. Procedure NA when tower closed.	MALS R AS	MISSED APPROACH: Climb to 500 then climbing right turn to 2000 on heading 010° and MOD VOR/DME R-309 to ORANG INT/MOD 25.8 DME and hold.
--	---------------------	---

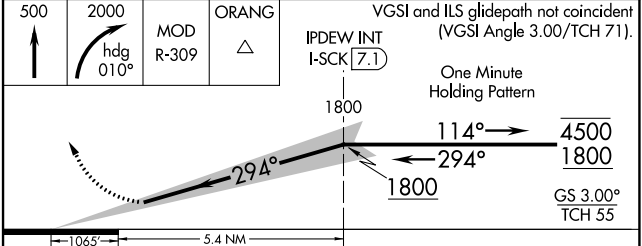
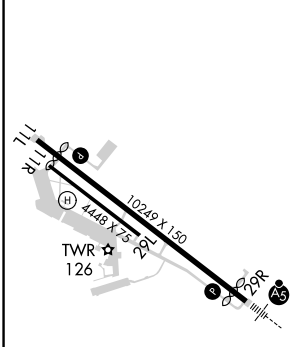
ATIS 118.25	NORCAL APP CON (SE-NW) 123.85 278.3 (N-SE) 125.1 363.2	STOCKTON TOWER * 120.3 (CTAF) 0 239.0	GND CON 121.9	UNICOM 122.95
-----------------------	--	--	-------------------------	-------------------------



SW-2, 13 JUN 2024 to 11 JUL 2024

SW-2, 13 JUN 2024 to 11 JUL 2024

ELEV 33	D	TDZE 32
---------	----------	---------



CATEGORY	A	B	C	D
S-ILS 29R	RA 105/12		100 DA	132

SA CATEGORY II ILS - SPECIAL AIRCREW & AIRCRAFT CERTIFICATION REQUIRED