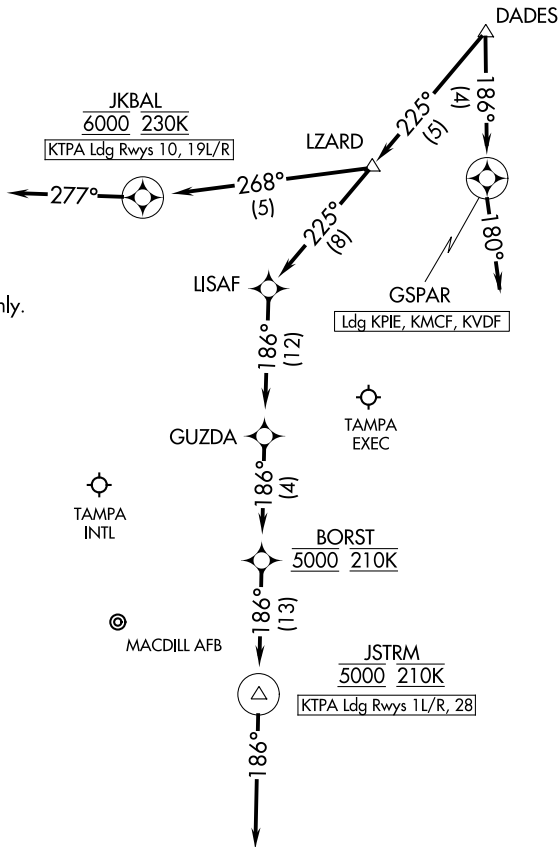


TAMPA APP CON  
135.5 279.6  
KMCF ATIS  
133.825 270.1  
PIE ATIS  
134.5  
TPA D-ATIS  
126.45  
VDF AWOS-3  
121.125

RNAV 1- DME/DME/IRU or GPS.

RADAR required.



NOTE: Jet and turboprop aircraft only.

ST PETE-  
CLEARWATER INTL

TAMPA  
INTL

MACDILL AFB

TAMPA  
EXEC

NOTE: Chart not to scale.

### ARRIVAL ROUTE DESCRIPTION

LANDING KTPA RUNWAYS 1L/R, 28: From DADES on track 225° to LZARD, then on track 225° to LISAF, then on track 186° to GUZDA, then on track 186° to cross BORST at 5000 and at 210K, then on track 186° to cross JSTRM at 5000 and at 210K, then on track 186°.  
Expect RADAR vectors to final approach course.

LANDING KTPA RUNWAYS 10, 19L/R: From DADES on track 225° to LZARD, then on track 268° to cross JKBAL at 6000 and at 230K, then on track 277°.  
Expect RADAR vectors to final approach course.

LANDING KPIE/KMCF/KVDF: From DADES on track 186° to GSPAR, then on track 180°.  
Expect RADAR vectors to final approach course.