

TAMPA, FLORIDA

AL-416 (FAA)

24081

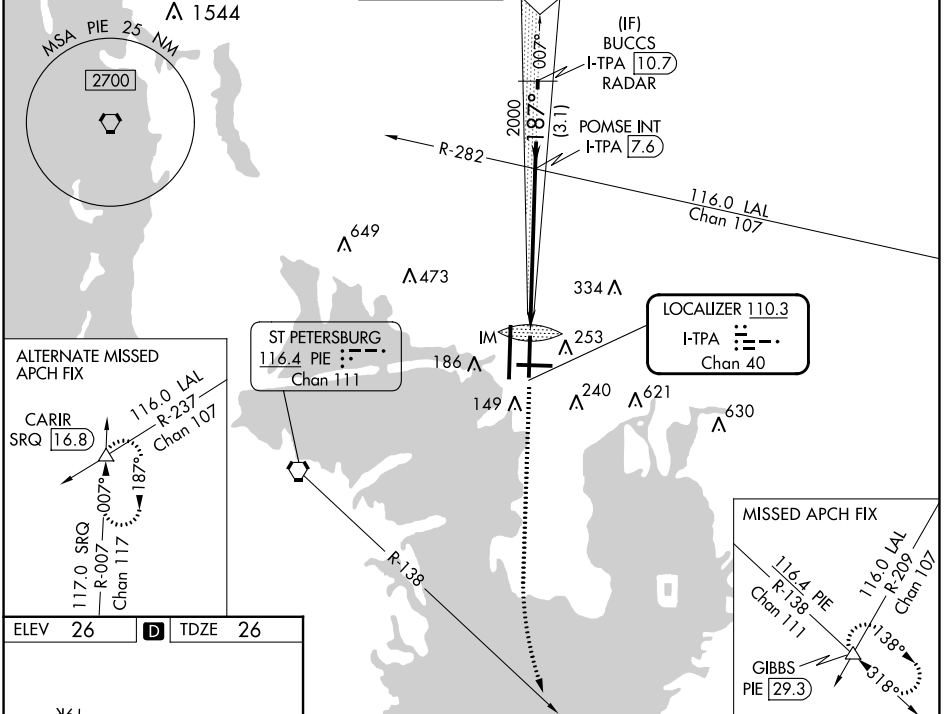
LOC/DME I-TPA 110.3 Chan 40	APP CRS 187°	Rwy Idg 8300 TDZE 26 Apt Elev 26
--	------------------------	---

ILS RWY 19L (CAT II)

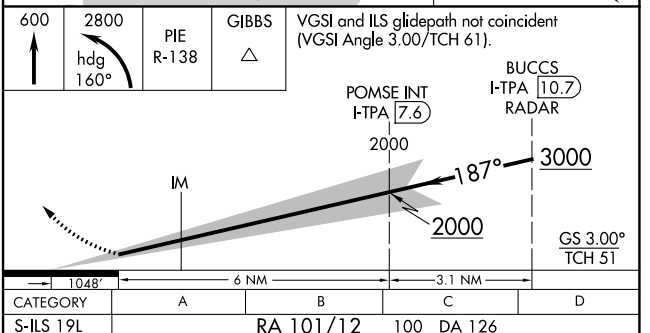
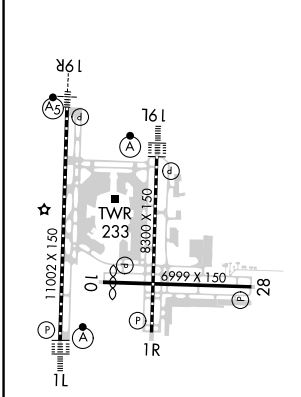
TAMPA INTL (TPA)

RADAR required for procedure entry.		ALSIF-2 	MISSED APPROACH: Climb to 600 then climbing left turn to 2800 on heading 160° and on PIE VORTAC R-138 to GIBBS INT/PIE 29.3 DME and hold.
 Simultaneous approach authorized. RVR 1000 authorized with specific OPSPEC, MSPEC, or LOA approval and use of autoland or HUD to touchdown.			

ARR 126.45	D-ATIS 128.475	DEP 118.5 307.175	TAMPA APP CON 119.5 269.4	TAMPA TOWER 119.5 269.4	GND CON 121.7 269.4	CLNC DEL 133.6	CPDLC
----------------------	--------------------------	-----------------------------	-------------------------------------	-----------------------------------	-------------------------------	--------------------------	-------



ELEV 26	D	TDZE 26
---------	----------	---------



CATEGORY II ILS - SPECIAL AIRCREW & AIRCRAFT CERTIFICATION REQUIRED

REIL Rwy 1R
TDZ/CL Rws 1L and 19L
HIRL Rws 1L-19R, 1R-19L, and 10-28

TAMPA, FLORIDA
Adnt 41 20APR23

27°59'N-82°32'W

TAMPA INTL (TPA)

ILS RWY 19L (CAT II)

SE-3, 13 JUN 2024 to 11 JUL 2024

SE-3, 13 JUN 2024 to 11 JUL 2024