

WAAS CH <b>87105</b> W01B	APP CRS <b>007°</b>	Rwy Idg <b>8300</b> TDZE <b>20</b> Apt Elev <b>26</b>
---------------------------------	------------------------	---

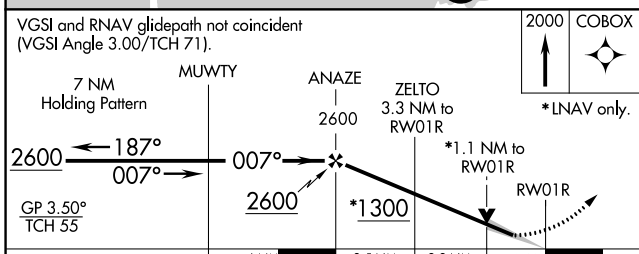
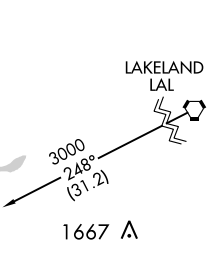
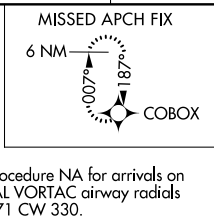
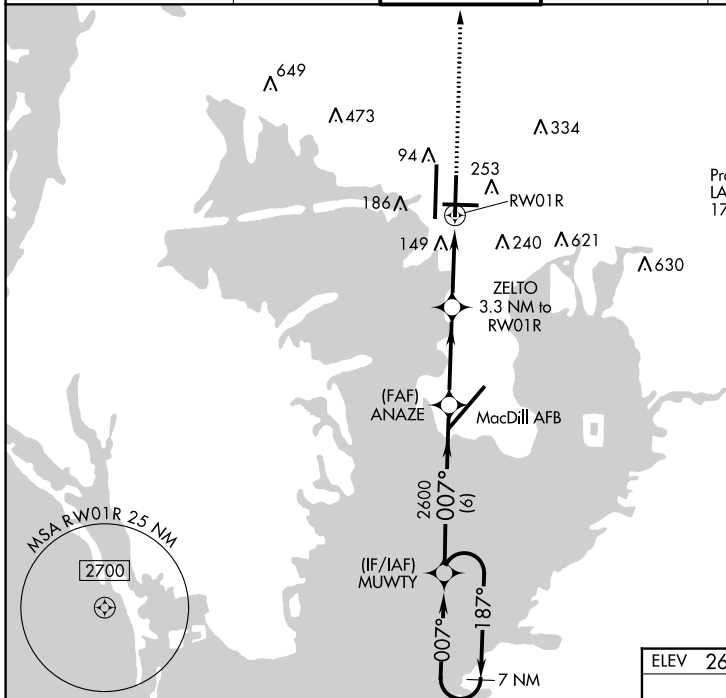
# RNAV (GPS) RWY 1R

TAMPA INTL (TPA)

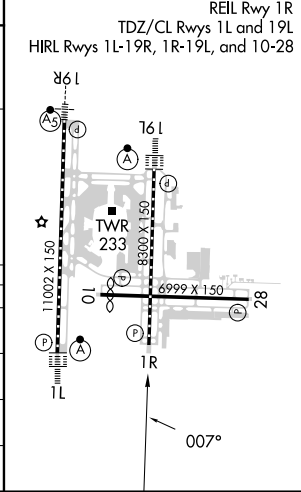
**⚠** For uncompensated Baro-VNAV systems, LNAV/VNAV NA below 0°C (32°F) or above 54°C (130°F). DME/DME RNP-0.3 NA. Simultaneous approach authorized with Rwy 1L. LNAV procedure NA during simultaneous operations. Use of FD or AP providing RNAV track guidance required during simultaneous operations.

**MISSED APPROACH:**  
Climb to 2000 direct COBOX and hold.

ARR <b>126.45</b>	D-ATIS <b>128.475</b>	DEP <b>118.5 307.175</b>	TAMPA APP CON <b>119.5 269.4</b>	TAMPA TOWER <b>121.7 269.4</b>	GND CON <b>133.6</b>	CLNC DEL <b>CPDLC</b>
----------------------	--------------------------	-----------------------------	-------------------------------------	-----------------------------------	-------------------------	--------------------------



ELEV 26	<b>D</b> TDZE 20
---------	------------------



CATEGORY	A	B	C	D	E
LPV DA	290-7/8	270 (300-7/8)			NA
LNAV/VNAV DA	491-13/8	471 (500-13/8)			NA
LNAV MDA	440-1	420 (500-1)	440-1 1/4	420 (500-1 1/4)	
<b>C</b> CIRCLING	560-1	534 (600-1)	680-1 3/4 654 (700-13/4)	980-3	954 (1000-3)