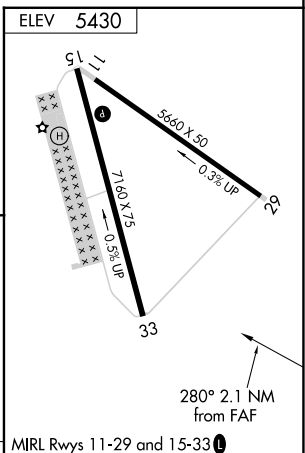
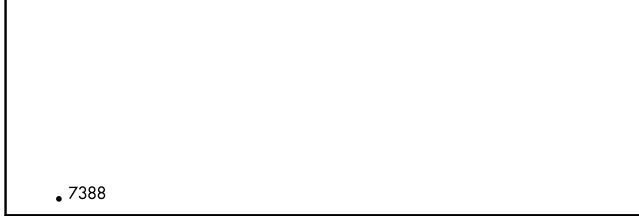
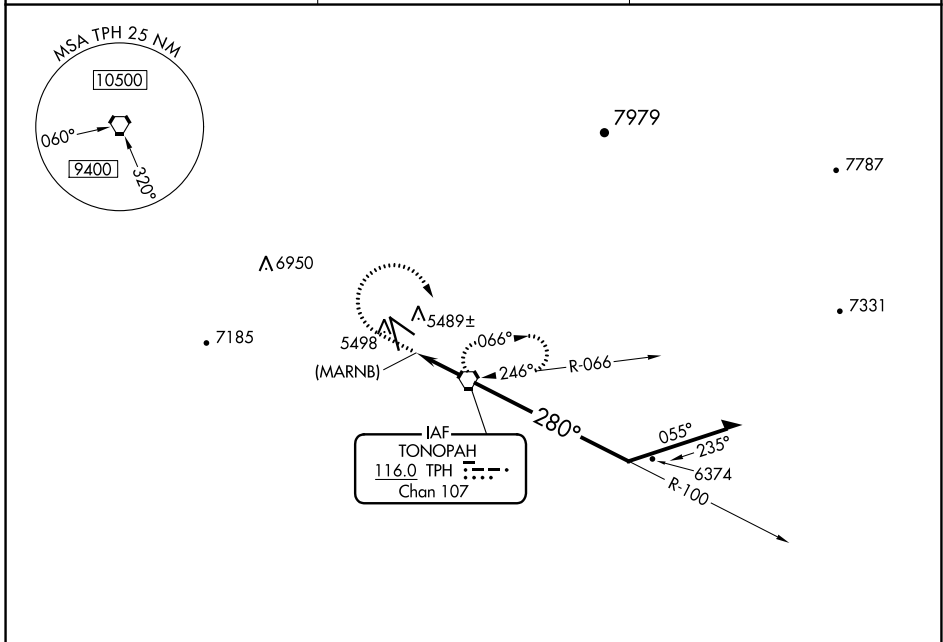


VORTAC TPH 116.0 Chan 107	APP CRS 280°	Rwy ldg TDZE N/A Apt Elev N/A 5430
---	------------------------	---

VOR or GPS-A TONOPAH (TPH)

⚠ Circling NA for Cat D southwest of Rwy 15-33. MISSED APPROACH: Climb to 6400 then climbing right turn to 9000 direct TPH VORTAC and hold.

ASOS 118.875	NELLIS APP CON 119,35 254.4	UNICOM 123.0 (CTAF) 0
------------------------	---------------------------------------	---------------------------------



CATEGORY	A	B	C	D	FAF to MAP 2.1 NM					
	6100-1	670 (700-1)	6320-2 ³ / ₄ 890 (900-2 ³ / ₄)	6320-3 890 (900-3)	Knots	60	90	120	150	180
CIRCLING	6100-1 670 (700-1)				Min:Sec	2:06	1:24	1:03	0:50	0:42

TONOPAH, NEVADA Amdt 3C 20MAY21	38°04'N-117°05'W	TONOPAH (TPH) VOR or GPS-A
------------------------------------	------------------	-------------------------------

SW-4, 13 JUN 2024 to 11 JUL 2024

SW-4, 13 JUN 2024 to 11 JUL 2024