

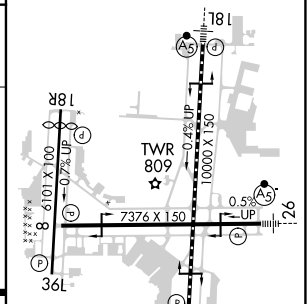
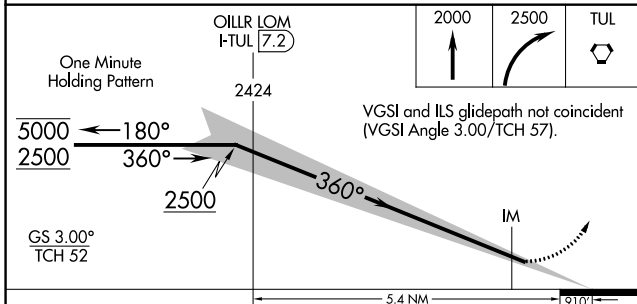
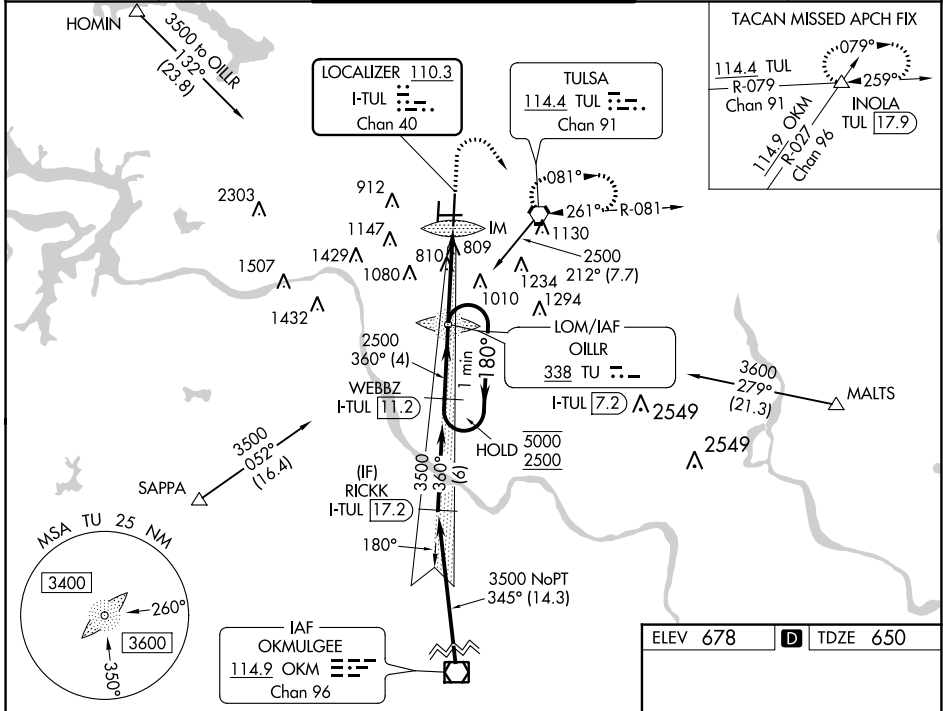
LOC/DME I-TUL <b>110.3</b> Chan 40	APP CRS <b>360°</b>	Rwy Idg TDZE <b>650</b> Apt Elev <b>678</b>
--	------------------------	---

# ILS RWY 36R (SA CAT I)

TULSA INTL (TUL)

ADF or DME required for procedure entry.		ALSIF-2 	MISSED APPROACH: Climb to 2000 then climbing right turn to 2500 direct TUL VORTAC and hold. (TACAN aircraft climb to 2000 then climbing right turn to 3500 via TUL VORTAC R-079 to INOLA INT/17.9 DME and hold E, RT, 259° inbound).
ASR Simultaneous approach authorized. Requires specific OPSEC, MSPEC, or LOA approval and use of HUD to DH.			

D-ATIS	TULSA APP CON	TULSA TOWER	GND CON	CLNC DEL
<b>124.9 377.2</b>	<b>124.0 338.3</b>	<b>121.2 310.8</b> (Rwys 18L-36R, 8-26) <b>118.7 257.8</b> (Rwy 18R-36L)	<b>121.9 348.6</b>	<b>134.05 284.7</b>



CATEGORY	A	B	C	D
S-ILS 36R	RA 166/14 150 DA 800			

**SA CATEGORY I ILS-SPECIAL AIRCREW & AIRCRAFT CERTIFICATION REQUIRED**

TDZ/CL Rwy 36R  
HIRL Rwys 8-26, 18L-36R and 18R-36L  
REIL Rwys 8, 18R and 36L

SC-1, 13 JUN 2024 to 11 JUL 2024

SC-1, 13 JUN 2024 to 11 JUL 2024