

VALPARAISO DESTIN FT WALTON BEACH, FLORIDA

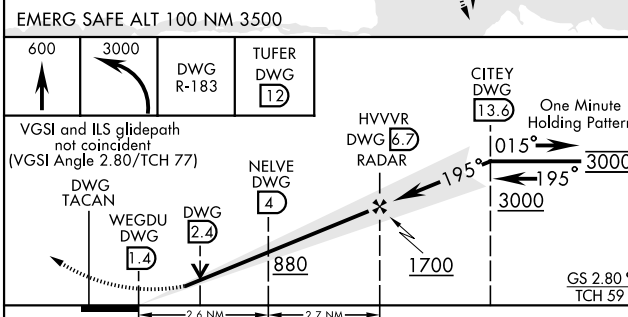
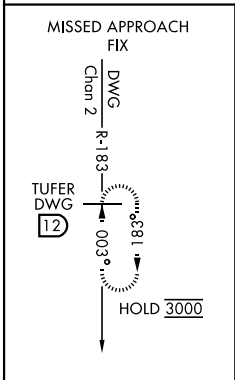
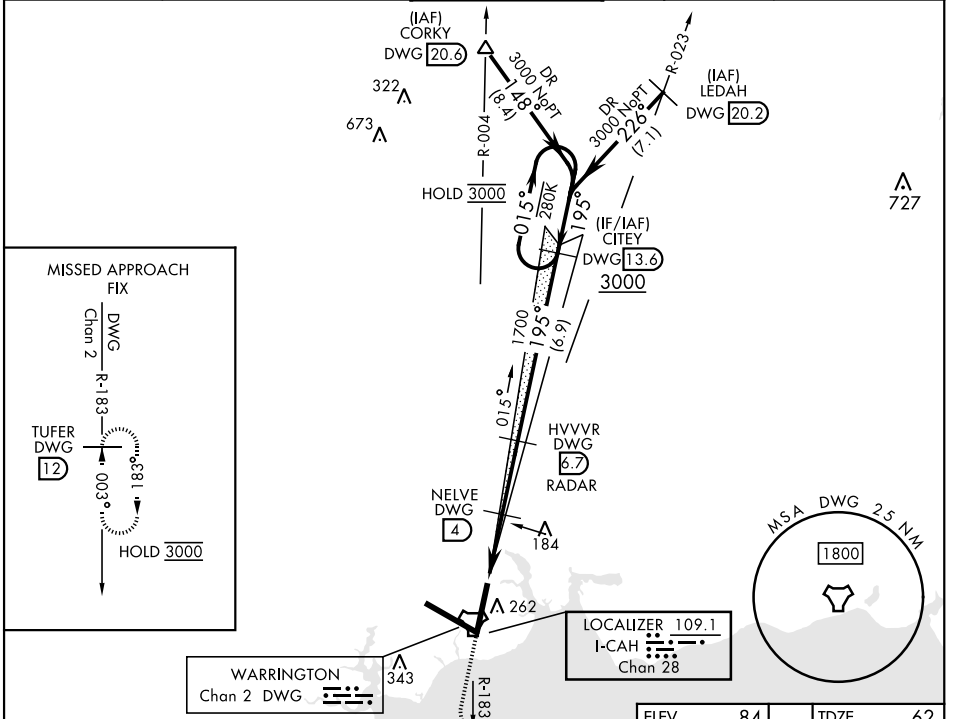
# ILS or LOC Y RWY 20

LOC/DME I-CAH <b>109.1</b> Chan <b>28</b>	APCH CRS <b>195°</b>	Rwy Idg <b>10,012</b> TDZE <b>62</b> Arprt Elev <b>84</b>
---	-------------------------	---

[USAF]

EGLIN AFB DESTIN FORT WALTON BEACH (KVPS)

DME required		ALSF-1	MISSED APPROACH: Climb to 600, then climbing left turn to 3000 on DWG TACAN R-183 to TUFER/12 DME and hold.		
* When ALS inop increase RVR to 40, vis to ¾ mile. ** When ALS inop increase RVR to 55, vis to 1 mile.					
ATIS ★ <b>134.625 273.5</b>	APP CON <b>125.1 281.45 271° - 089°</b> <b>132.1 360.6 090° - 270°</b>	TOWER <b>118.2 353.65</b>	GND CON <b>121.8 335.8</b>	CLNC DEL <b>127.7 377.2</b>	



ELEV	84	TDZE	62		
† Rwy 20 apch lgt 1500' nonstandard. HIRL all rwys					
FAF to MAP 5.3 NM					
Knots	60	90	120	150	180
Min:Sec	5:18	3:32	2:39	2:07	1:46

CATEGORY	A	B	C	D	E
S-ILS 20 *	262/24		200	(200-½)	
S-LOC 20 **	440/24	378 (400-½)	440/35	378	(400-¾)
Ⓢ CIRCLING	600-1	516 (600-1)	680-1½ 596 (600-½)	680-2 596 (600-2)	700-2¼ 616 (700-2¼)

VALPARAISO DESTIN FT WALTON BEACH, FLORIDA  
Orig 16MAY24

EGLIN AFB DESTIN FORT WALTON BEACH (KVPS)  
30°29'N-86°32'W

# ILS or LOC Y RWY 20

SE-3, 13 JUN 2024 to 11 JUL 2024

SE-3, 13 JUN 2024 to 11 JUL 2024