

VALPARAISO DESTIN FT WALTON BEACH, FLORIDA

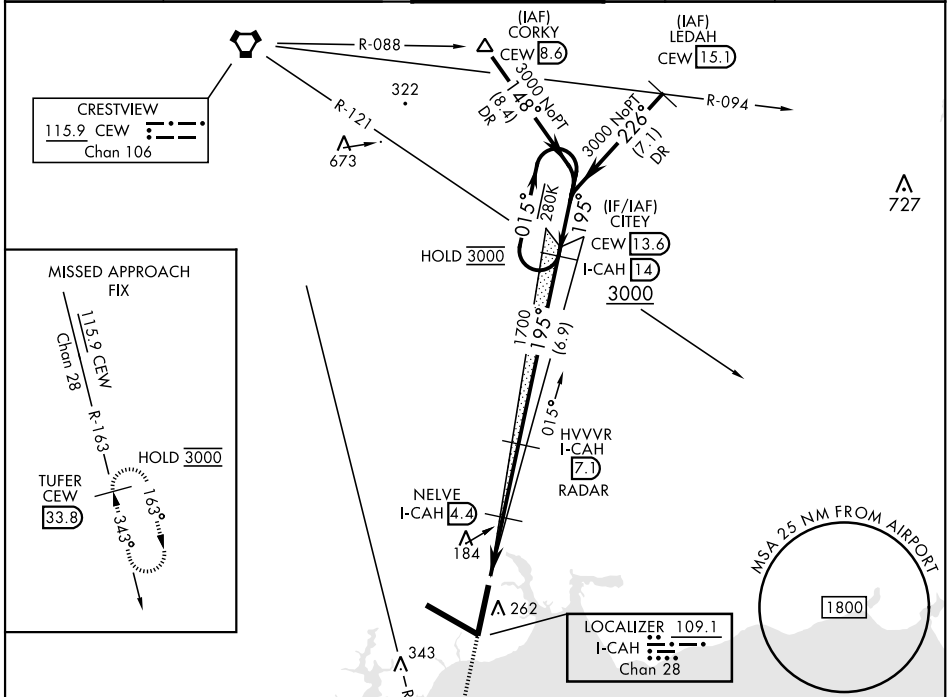
# ILS or LOC Z RWY 20

LOC/DME I-CAH <b>109.1</b> Chan <b>28</b>	APCH CRS <b>195°</b>	Rwy Idg TDZE Arprt Elev <b>10,012</b> <b>62</b> <b>84</b>
---	-------------------------	--

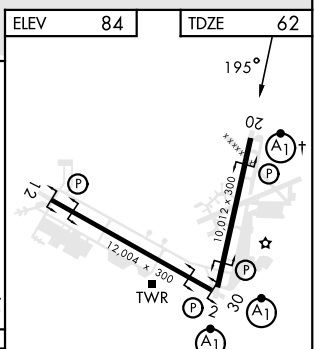
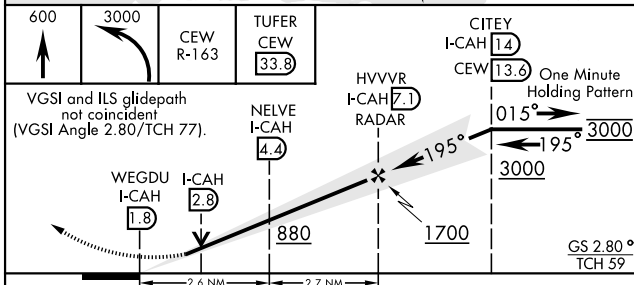
[USAF] EGLIN AFB DESTIN FORT WALTON BEACH (KVPS)

DME required	ALSF-1 	MISSED APPROACH: Climb to 600, then climbing left turn to 3000 on CEW VORTAC R-163 to TUFER/33.8 DME and hold.
--------------	------------	--

ATIS ★ <b>134.625 273.5</b>	APP CON <b>125.1 281.45 271°-089°</b> <b>132.1 360.6 090°-270°</b>	TOWER <b>118.2 353.65</b>	GND CON <b>121.8 335.8</b>	CLNC DEL <b>127.7 377.2</b>
--------------------------------	--	------------------------------	-------------------------------	--------------------------------



EMERG SAFE ALT 100 NM 3500



CATEGORY	A	B	C	D	E
S-ILS 20 *	262/24		200	(200-½)	
S-LOC 20 **	440/24	378 (400-½)	440/35	378	(400-¾)
CIRCLING	600-1	516 (600-1)	680-1½	680-2	700-2¼
			596 (600-½)	596 (600-2)	616 (700-2¼)

† Rwy 20 apch lgt 1500' nonstandard.  
HIRL all rwys

FAF to MAP 5.3 NM					
Knots	60	90	120	150	180
Min:Sec	5:18	3:32	2:39	2:07	1:46

VALPARAISO DESTIN FT WALTON BEACH, FLORIDA  
Orig 16MAY24

EGLIN AFB DESTIN FORT WALTON BEACH (KVPS)  
30°29'N-86°32'W

# ILS or LOC Z RWY 20

SE-3, 13 JUN 2024 to 11 JUL 2024

SE-3, 13 JUN 2024 to 11 JUL 2024