

TACAN RWY 12

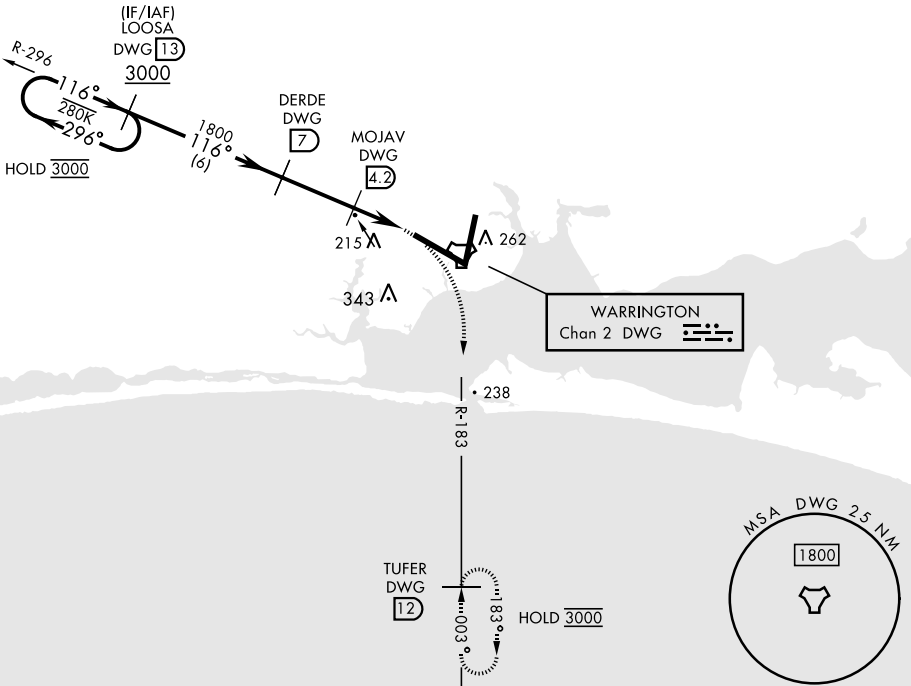
TACAN DWG Chan 2	APCH CRS 116°	Rwy Ldg 12,004 TDZE 84 Arprt Elev 84
---------------------	------------------	---

[USAF] EGLIN AFB DESTIN FORT WALTON BEACH (KVPS)

MISSED APPROACH: Climb to 600, then climbing right turn to 3000 and intercept DWG TACAN R-183 to TUFER/12 DME and hold.

ATIS ★ 134.625 273.5	APP CON 125.1 281.45 271°-089° 132.1 360.6 090°-270°	TOWER 118.2 353.65	GND CON 121.8 335.8	CLNC DEL 127.7 377.2
-------------------------	--	-----------------------	------------------------	-------------------------

295



EMERG SAFE ALT 100 NM 3500

One Minute Holding Pattern	LOOSA DWG 13	DERDE DWG 7	MOJAV DWG 4.2	LEDKE DWG 2.2	DWG TACAN	ELEV 84	TDZE 84
	3000 ← 296°	← 116°	→ 116°	→ 1800	→ 920	↑ Rwy 20 apch lgt 1500' nonstandard.	
	← 296°	→ 116°	→ 3.00° TCH 50	→ 920	→ 600	→ 3000	→ TUFER DWG 12
	← 296°	→ 116°	→ 3.00° TCH 50	→ 920	→ 600	→ 3000	→ TUFER DWG 12
	← 296°	→ 116°	→ 3.00° TCH 50	→ 920	→ 600	→ 3000	→ TUFER DWG 12

Distance markers: ← 2.8 NM, ← 2.0 NM, ← 0.5 NM

Diagram details: 116° heading, 12,004' x 300' TWR, 10,012' x 2,300' runway, 30' width, A1 and P markers.

CATEGORY	A	B	C	D	E
S-12	520/55	436 (500-1)	520-1½	436 (500-1¼)	
CIRCLING	600-1	516 (600-1)	680-1½ 596 (600-1½)	680-2 596 (600-2)	700-2¼ 616 (700-2¼)

HIRL all rwys

TACAN RWY 12

SE-3, 13 JUN 2024 to 11 JUL 2024

SE-3, 13 JUN 2024 to 11 JUL 2024