

VORTAC TRV <b>117.3</b> Chan 120	APP CRS <b>298°</b>	Rwy ldg TDZE <b>22</b> Apt Elev <b>24</b>	<b>7276</b>
--	------------------------	---	-------------

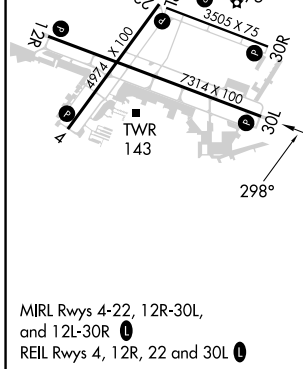
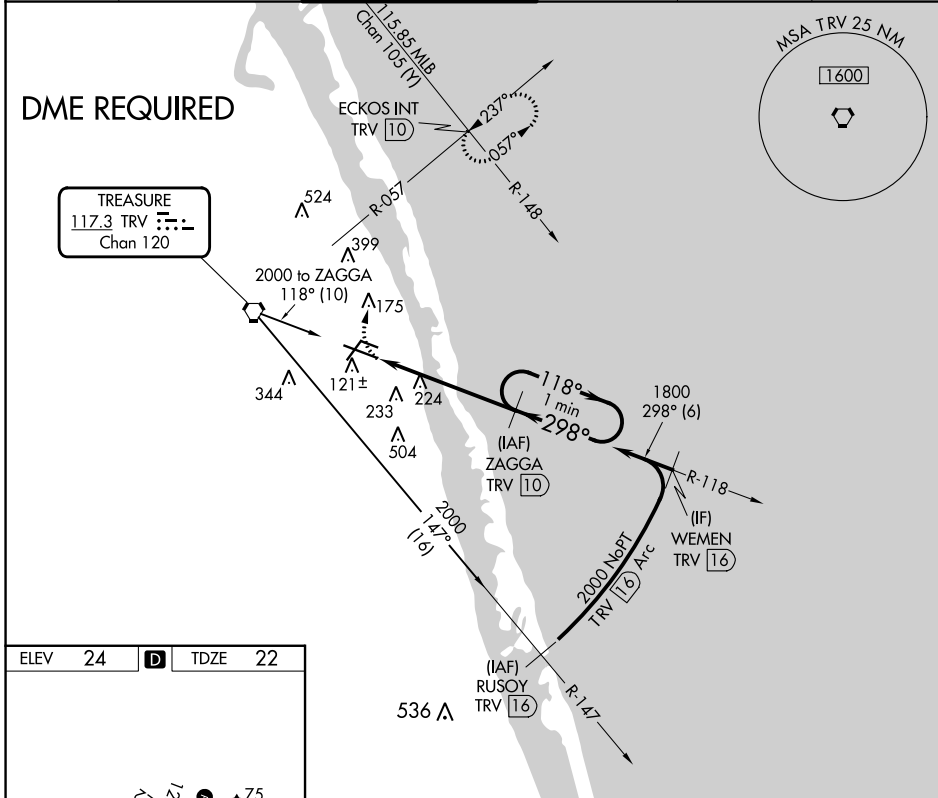
# VOR RWY 30L

VERO BEACH RGNL (VRB)

**⚠** Circling to Rwy 30R NA at night. When local altimeter setting not received, use Fort Pierce altimeter setting and increase all MDAs 40 feet and Circling Cat C/D visibility 1/2 SM. VDP NA with Fort Pierce altimeter setting. DME required.

**MISSED APPROACH:** Climbing right turn to 2000 on heading 360° and TRV VORTAC R-057 to ECKOS INT/TRV 10 DME and hold.

ATIS <b>120.575</b>	PALM BEACH APP CON <b>123.625 225.4 (N)</b>	VERO BEACH TOWER ★ <b>126.3 (CTAF) 0</b>	GND CON <b>127.45</b>	CLNC DEL <b>134.975</b>	UNICOM <b>122.95</b>
------------------------	--	---	--------------------------	----------------------------	-------------------------



2000 hdg 360°	TRV R-057	ECKOS INT	ZAGGA TRV 10	One Minute Holding Pattern
TRV 4.7	TRV 6	TRV 10	1800	118° → ← 298°
1.3 NM		4 NM		
CATEGORY	A	B	C	D
S-30L	500-1	478 (500-1)	500-1 3/8 478 (500-1 3/8)	
CIRCLING	560-1	536 (600-1)	660-1 3/4 636 (700-1 3/4)	820-2 1/2 796 (800-2 1/2)

SE-3, 13 JUN 2024 to 11 JUL 2024

SE-3, 13 JUN 2024 to 11 JUL 2024