

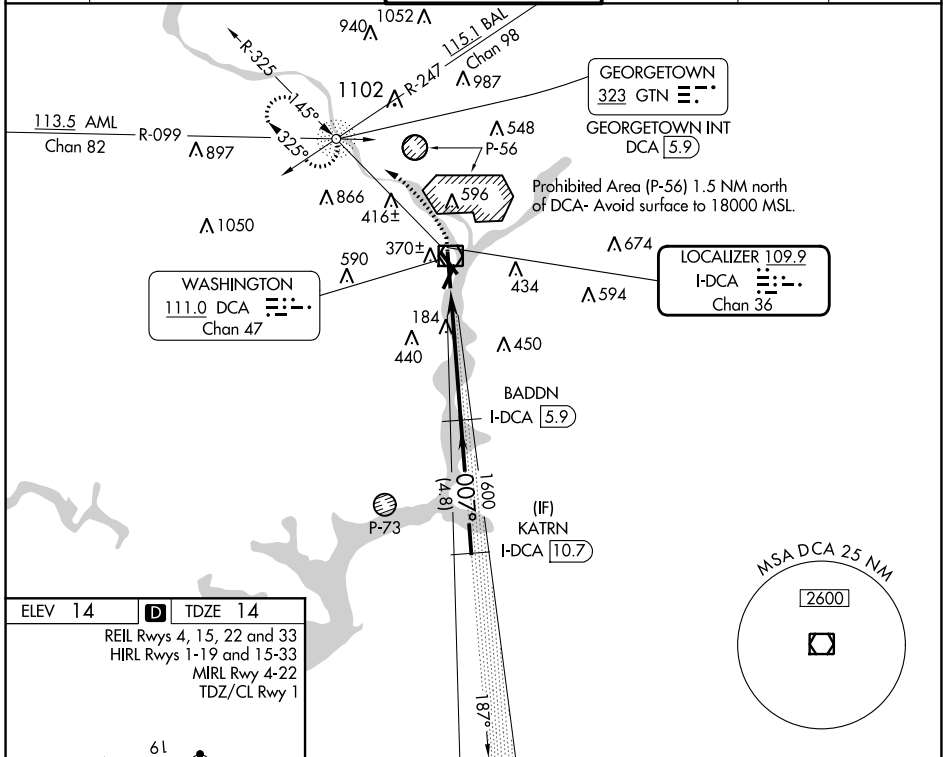
LOC/DME I-DCA 109.9 Chan 36	APP CRS 007°	Rwy Idg 6869 TDZE 14 Apt Elev 14
---	------------------------	---

ILS RWY 1 (CAT II)

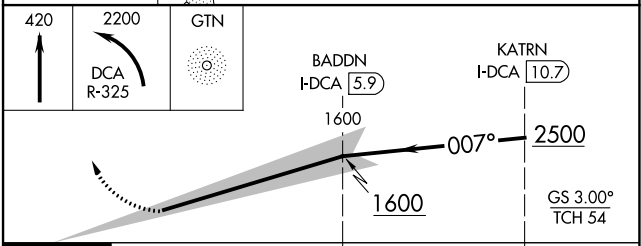
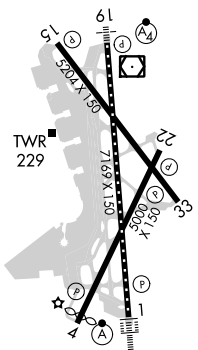
RONALD REAGAN WASHINGTON NTL (DCA)

DME required. RADAR required for procedure entry.		ALS-F-2 	MISSED APPROACH: Climb to 420 then climbing left turn to 2200 on DCA VOR/DME R-325 to GTN NDB/INT/DCA 5.9 DME and hold.		
---	--	-------------	---	--	--

D-ATIS 132.65	POTOMAC APP CON 119.85 239.25 (WEST/SOUTH) 124.2 360.8 (EAST)	WASHINGTON TOWER 119.1 257.6	GND CON 121.7 257.6	CLNC DEL 128.25	CPDLC
-------------------------	---	--	-------------------------------	---------------------------	-------



ELEV 14	D	TDZE 14
REIL Rwys 4, 15, 22 and 33 HIRL Rwys 1-19 and 15-33 MIRL Rwy 4-22 TDZ/CL Rwy 1		



1007°	4.8 NM	4.8 NM		
CATEGORY	A	B	C	D
S-ILS 1	RA 106/12 100 DA 114			

CATEGORY II ILS- SPECIAL AIRCREW & AIRCRAFT CERTIFICATION REQUIRED

NE-3, 13 JUN 2024 to 11 JUL 2024

NE-3, 13 JUN 2024 to 11 JUL 2024