

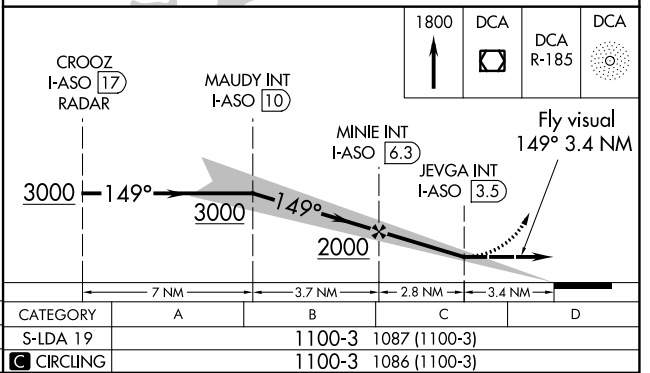
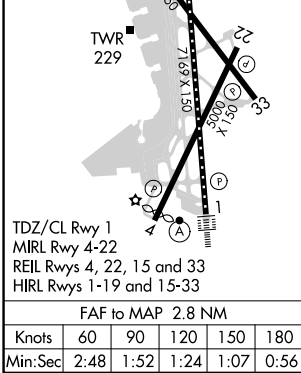
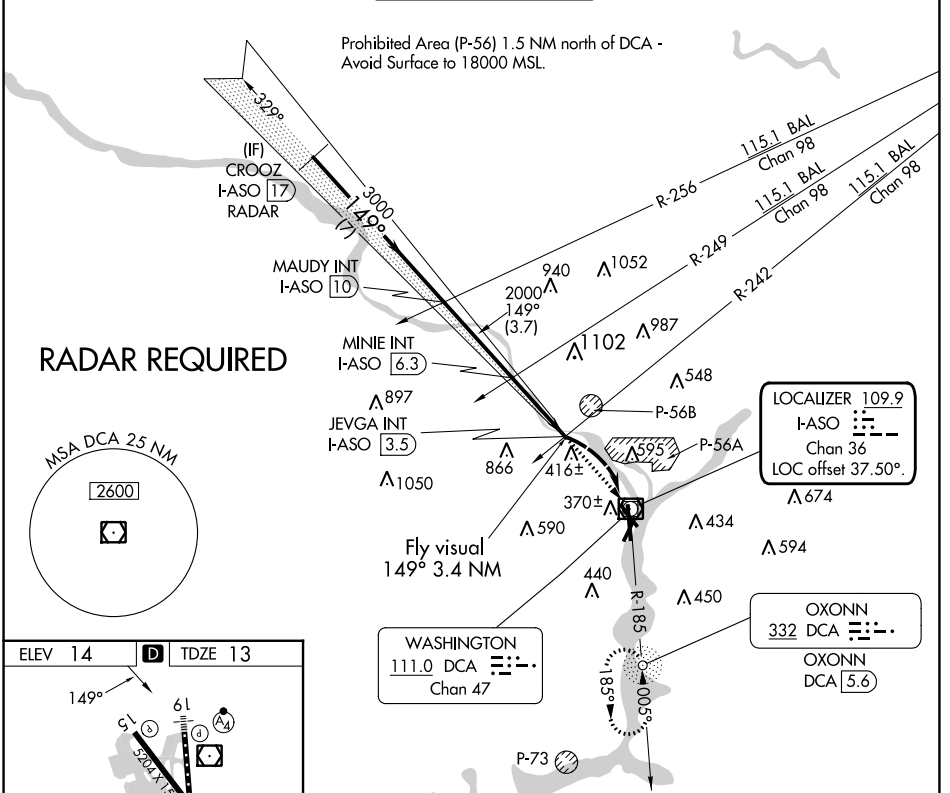
LOC/DME I-ASO <b>109.9</b> Chan <b>36</b>	APP CRS <b>149°</b>	Rwy Idg TDZE Apt Elev	<b>6869</b> <b>13</b> <b>14</b>
---	------------------------	-----------------------------	---------------------------------------

# LDA Y RWY 19

RONALD REAGAN WASHINGTON NTL (DCA)

<b>⚠</b> <b>⚠</b>	Inoperative table does not apply. Circling NA northeast of Rwy 15-33. ADF or DME required.	MALSF 	MISSED APPROACH: Climb to 1800 direct DCA VOR/DME and on DCA VOR/DME R-185 to OXONN NDB/DCA 5.6 DME and hold.
----------------------	--	-----------	---

D-ATIS <b>132.65</b>	POTOMAC APP CON <b>119.85 239.25</b> (WEST/SOUTH) <b>124.2 360.8</b> (EAST)	WASHINGTON TOWER <b>119.1 257.6</b>	GND CON <b>121.7 257.6</b>	CLNC DEL <b>128.25</b>	CPDLC
-------------------------	---	--	-------------------------------	---------------------------	-------



WASHINGTON, DC Amdt 1A 29MAR18	RONALD REAGAN WASHINGTON NTL (DCA) LDA Y RWY 19	38°51'N-77°02'W
-----------------------------------	--	-----------------

NE-3, 13 JUN 2024 to 11 JUL 2024

NE-3, 13 JUN 2024 to 11 JUL 2024