

LOC/DME I-VVWH 108.5 Chan 22	APP CRS 147°	Rwy Idg 6869 TDZE 13 Apt Elev 14
--	------------------------	---

LDA Z RWY 19

RONALD REAGAN WASHINGTON NTL (DCA)

⚠ Inop table does not apply. Circling NA northeast of Rwy 15-33. Rwy 19 helicopter visibility reduction below 1 SM NA. DME required.

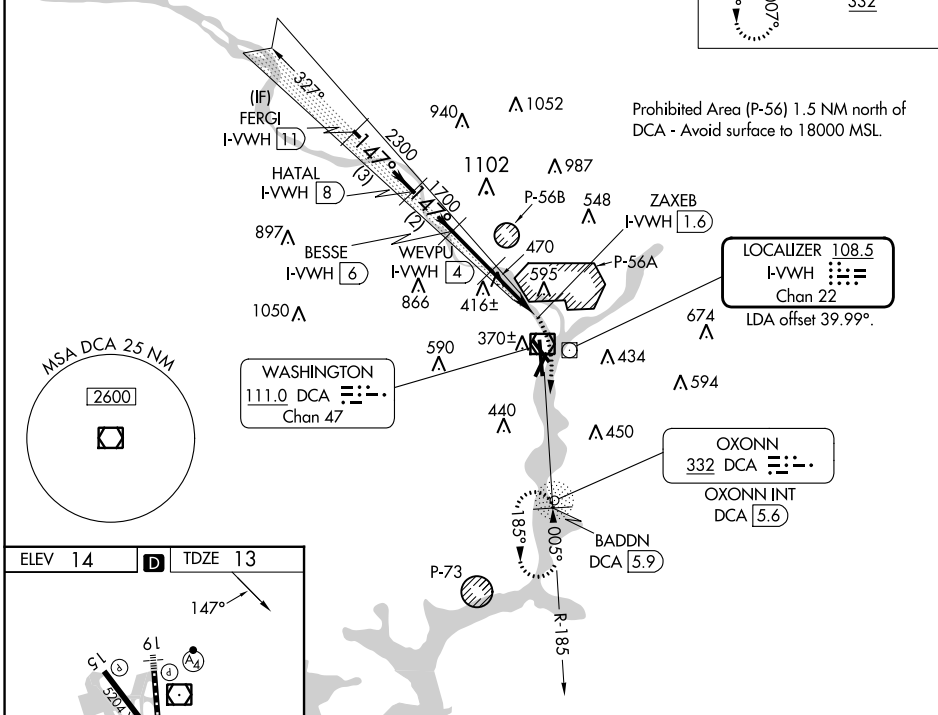
MALSF
MISSED APPROACH: Climbing right turn to 3000 on DCA VOR/DME R-185 to BADDN/DCA VOR/DME 5.9 DME and hold, continue climb-in-hold to 3000.

D-ATIS 132.65	POTOMAC APP CON 119.85 239.25 124.2 360.8 (WEST/SOUTH) (EAST)	WASHINGTON TOWER 119.1 257.6	GND CON 121.7 257.6	CLNC DEL 128.25	CPDLC
-------------------------	---	--	-------------------------------	---------------------------	-------

ALTERNATE MISSED APCH FIX

OXONN
DCA **332**

RADAR REQUIRED



Prohibited Area (P-56) 1.5 NM north of DCA - Avoid surface to 18000 MSL.

NE-3, 13 JUN 2024 to 11 JUL 2024

NE-3, 13 JUN 2024 to 11 JUL 2024

ELEV 14	D	TDZE 13
---------	----------	---------

TDZ/CL Rwy 1
MIRL Rwy 4-22
REIL Rws 4, 22, 15 and 33
HIRL Rws 1-19 and 15-33

	FERGI I-VVWH 11	HATAL I-VVWH 8	BESSE I-VVWH 6	WEVPU I-VVWH 4	ZAXEB I-VVWH 1.6	3000	BADDN DCA 5.9
	3000	2300	1700	1100			
	3 NM	2 NM	2 NM	2.4 NM	0.8		
CATEGORY	A		B		C		D
S-19	720/55		707 (800-1)		720-2		707 (800-2)
C CIRCLING	720-1		706 (800-1)		840-1½		900-3
					826 (900-1½)		886 (900-3)