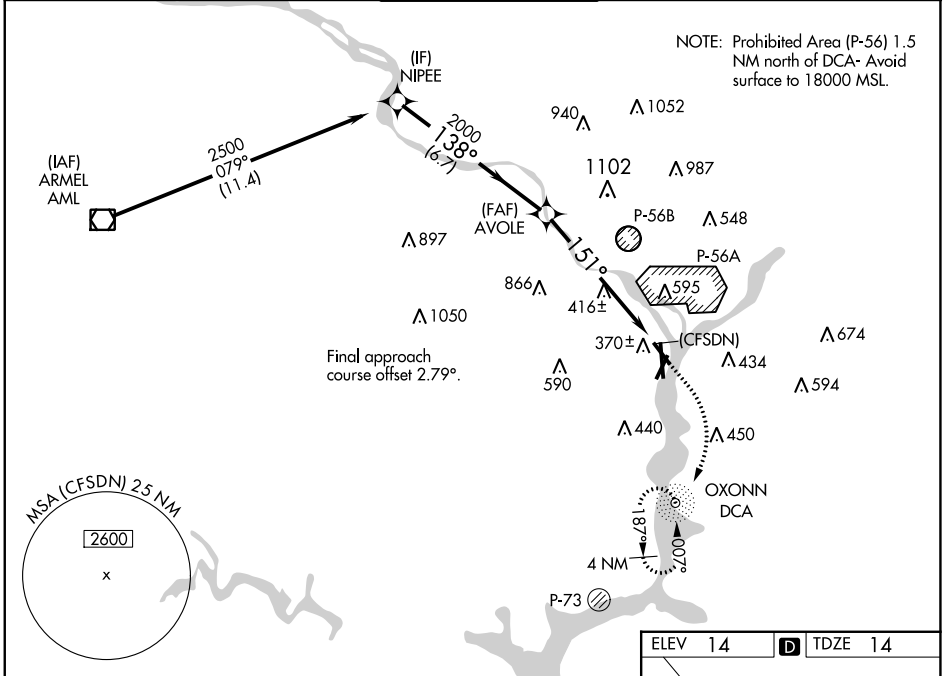


WAAS CH <b>70737</b> <b>W15A</b>	APP CRS <b>151°</b>	Rwy Idg <b>5204</b> TDZE <b>14</b> Apt Elev <b>14</b>
--	------------------------	---

# RNAV (GPS) RWY 15

RONALD REAGAN WASHINGTON NTL (DCA)

RNP APCH.		MISSED APPROACH: (Do not exceed 210 KIAS until reaching 600 MSL) Climb to 600 then climbing right turn to 1800 direct DCA NDB and hold.			
<p>▼ Circling NA northeast of Rwy 15-33. Rwy 15 helicopter visibility reduction below 3/4 SM NA. For uncompensated Baro-VNAV systems, LNAV/VNAV NA below -11°C or above 54°C.</p>					
D-ATIS <b>132.65</b>	POTOMAC APP CON <b>119.85 239.25</b> (WEST/SOUTH) <b>124.2 360.8</b> (EAST)	WASHINGTON TOWER <b>119.1 257.6</b>	GND CON <b>121.7 257.6</b>	CLNC DEL <b>128.25</b>	CPDLC



NE-3, 13 JUN 2024 to 11 JUL 2024

NE-3, 13 JUN 2024 to 11 JUL 2024

VGSI and RNAV glidepath not coincident (VGSI Angle 3.00/TCH 36).

NIPEE	AVOLE	CFSDN	DCA
2500	2000	1800	600
1738°	151°		
6.7 NM	3.8 NM	2.3 NM	
* LNAV only.			
*2.3 NM to (CFSDN)			
GP 3.00°	TCH 55		

CATEGORY	A	B	C	D
LPV DA		395-1 1/8	381 (400-1 1/8)	
LNAV/VNAV DA		749-2	735 (800-2)	
LNAV MDA	800-1 786 (800-1)	800-1 1/4 786 (800-1 1/4)	800-2 1/2	786 (800-2 1/2)
CIRCLING	800-1 786 (800-1)	800-1 1/4 786 (800-1 1/4)	840-2 1/2 826 (900-2 1/2)	900-3 886 (900-3)

