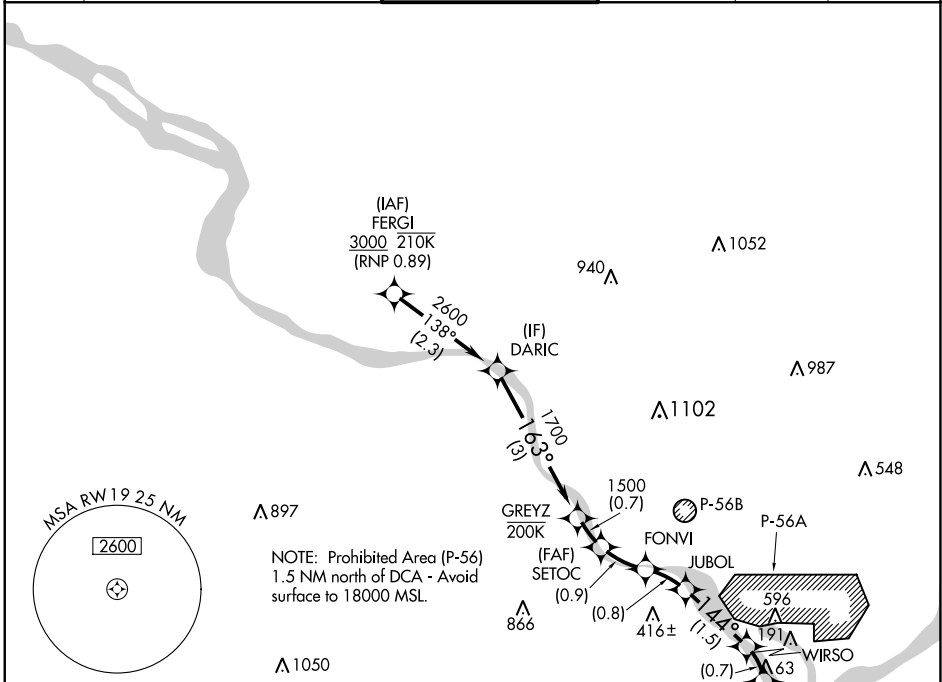


APP CRS	Rwy Idg	<b>6869</b>
<b>187°</b>	TDZE	<b>13</b>
	Apt Elev	<b>14</b>

# RNAV (RNP) RWY 19

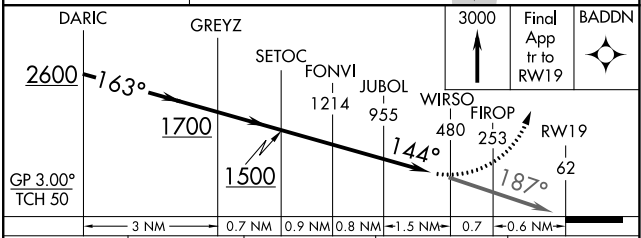
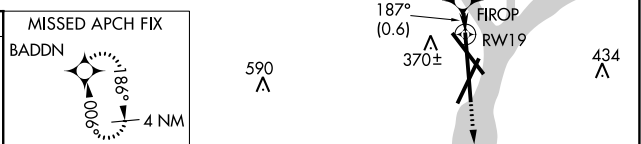
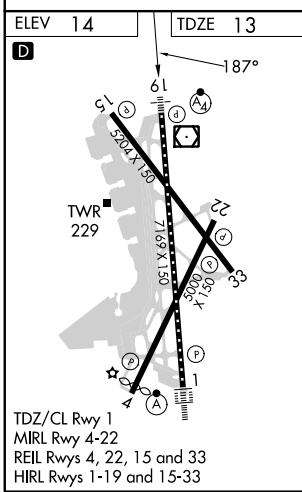
RONALD REAGAN WASHINGTON NTL (DCA)

For uncompensated Baro-VNAV systems, procedure NA below -9°C (16°F) or above 54°C (130°F). Inoperative table does not apply. RF and GPS required.		MISSED APPROACH: Climb to 3000 on the final approach track to RWY19 then direct BADDN and hold, continue climb-in-hold to 3000.			
		D-ATIS	POTOMAC APP CON	WASHINGTON TOWER	GND CON
<b>132.65</b>	<b>119.85 239.25 124.2 360.8</b> (WEST/SOUTH) (EAST)	<b>119.1 257.6</b>	<b>121.7 257.6</b>	<b>128.25</b>	



NE-3, 13 JUN 2024 to 11 JUL 2024

NE-3, 13 JUN 2024 to 11 JUL 2024



CATEGORY	A	B	C	D
RNP 0.11 DA		491-1½	478 (500-1½)	
RNP 0.30 DA		550-1¾	537 (600-1¾)	