

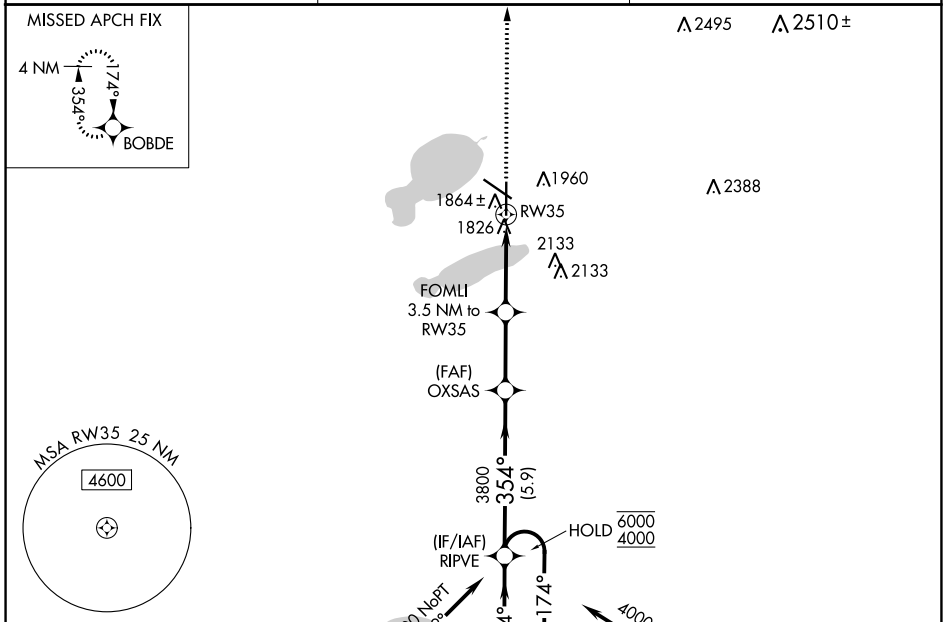
WAAS CH <b>82614</b> <b>W35A</b>	APP CRS <b>354°</b>	Rwy Idg TDZE <b>1745</b> Apt Elev <b>1749</b>
--	------------------------	---

# RNAV (GPS) RWY 35

WATERTOWN RGNL (ATY)

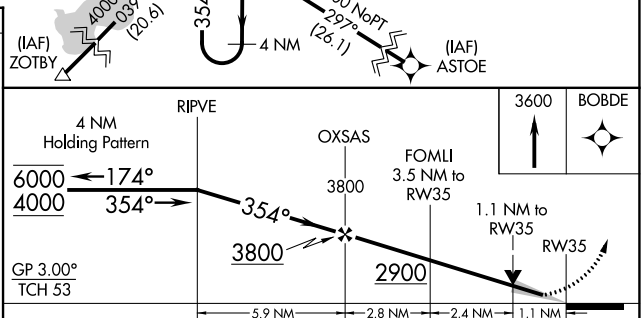
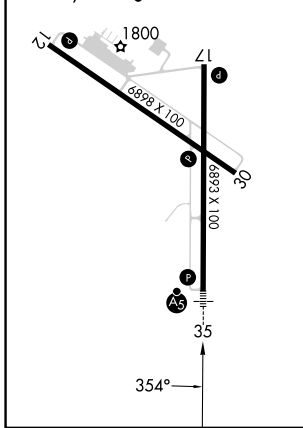
RNP APCH - GPS.	MALSR 	MISSED APPROACH: Climb to 3600 direct BOBDE and hold.
For uncompensated Baro-VNAV systems, LNAV/VNAV NA below -21°C or above 54°C. For inop ALS, increase LNAV Cat C/D visibility to 1 1/2 SM.		

ASOS <b>126.625</b>	MINNEAPOLIS CENTER <b>128.5 306.2</b>	UNICOM <b>123.05 (CTAF) 0</b>
------------------------	--	----------------------------------



ELEV 1749	<b>D</b>	TDZE 1745
-----------	----------	-----------

REIL Rws 12, 17 and 30  
HIRL Rwy 17-35  
MIRL Rwy 12-30



CATEGORY	A	B	C	D
LPV DA		1945-1/2	200 (200-1/2)	
LNAV/VNAV DA		2180-3/4	435 (500-3/4)	
LNAV MDA	2160-1/2	415 (500-1/2)	2160-3/4	415 (500-3/4)
<b>C</b> CIRCLING	2260-1	511 (600-1)	2500-2 1/4 751 (800-2 1/4)	2500-2 1/2 751 (800-2 1/2)

NC-1, 13 JUN 2024 to 11 JUL 2024

NC-1, 13 JUN 2024 to 11 JUL 2024